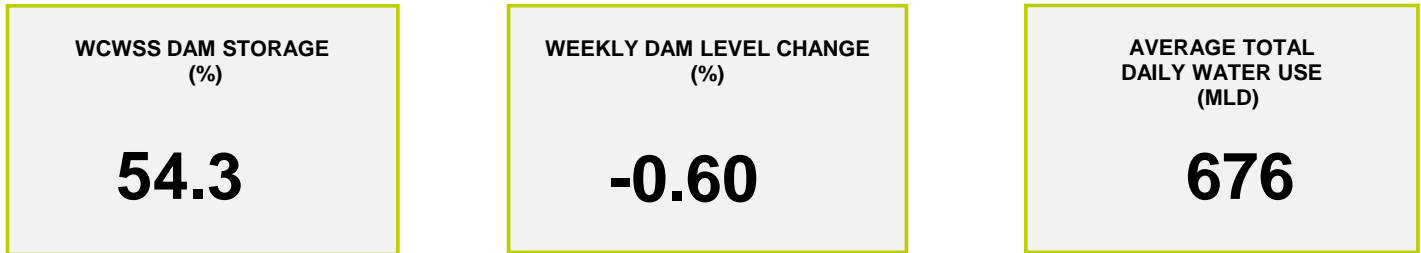
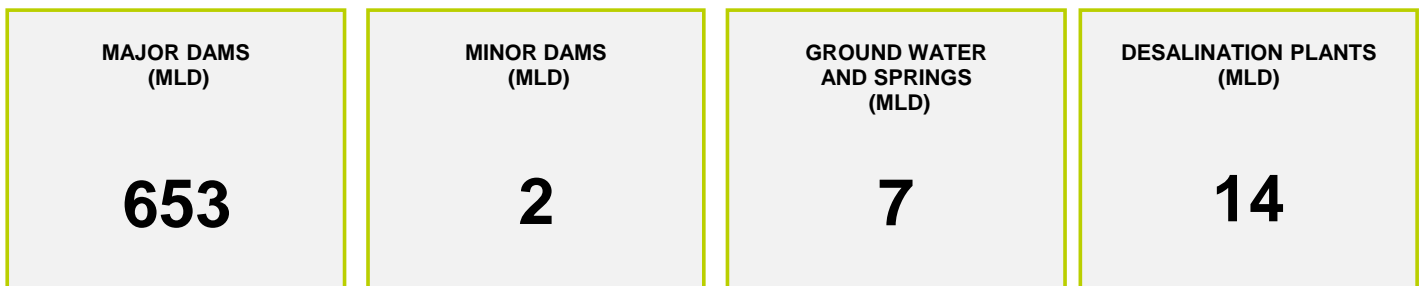




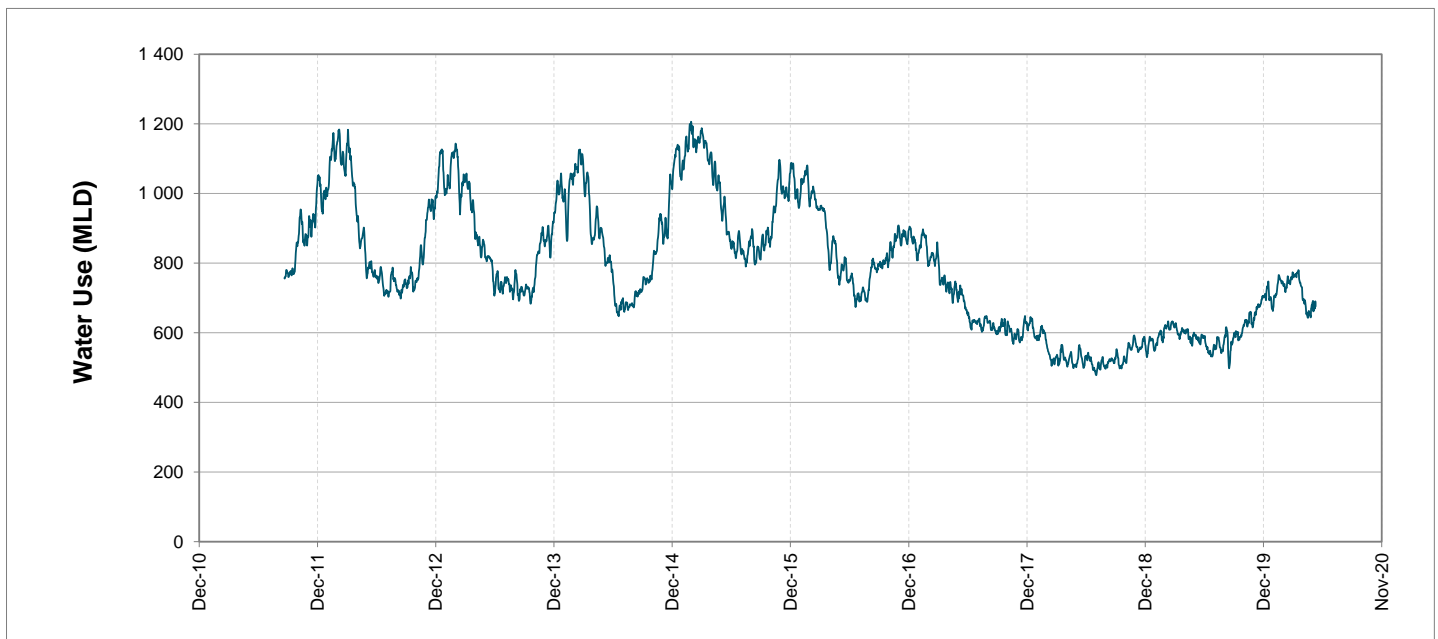
Headline Statistics



Water Production from Different Sources



Overall Water Usage Trend (2010 - Present)



WCWSS means Western Cape Water Supply System

MLD means million litres per day

More information on Water Saving and Restrictions is available on the City of Cape Town's 'ThinkWater' website

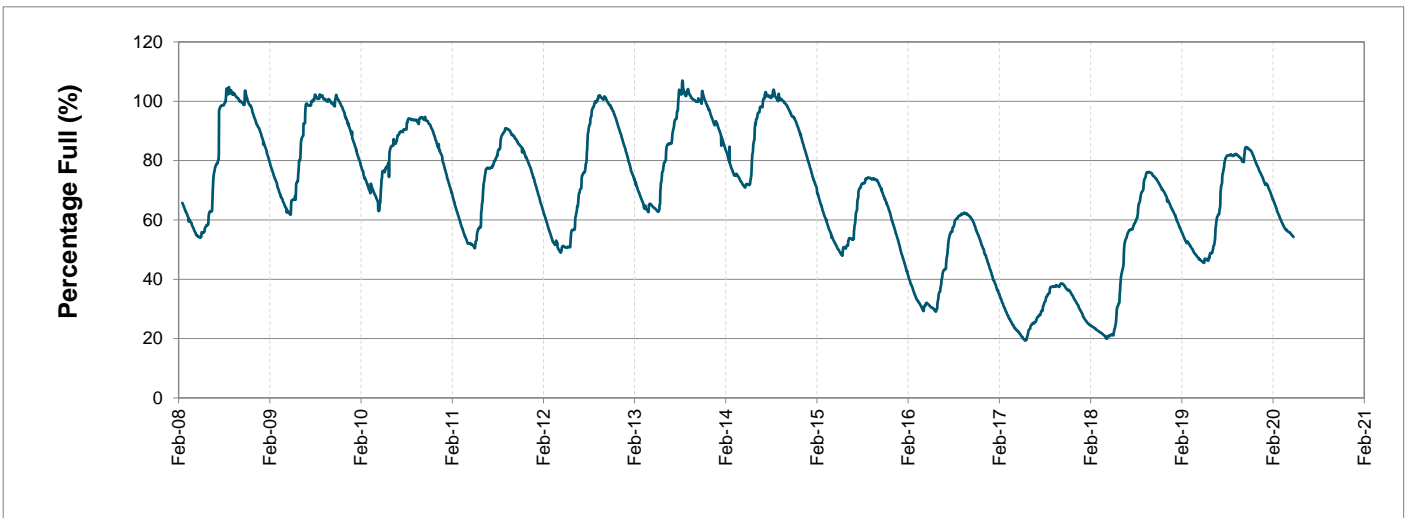
Water Stored in Major Dams (WCWSS)

Overall Percentage Full **54.3%**

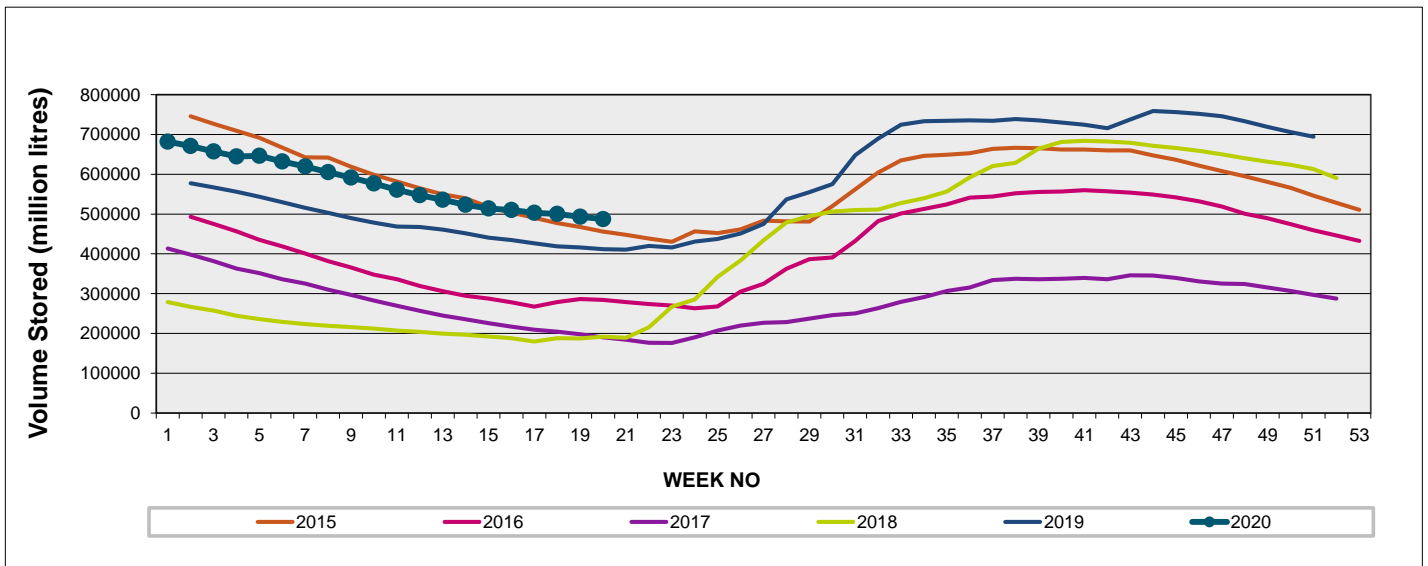
Weekly Change **-0.6%**

MAJOR DAMS (WCWSS)	STORAGE						
	CAPACITY	%	%	%	%	%	%
	MI	11 May 2020	Previous week	2019	2018	2017	2016
BERG RIVER	130 010	66.2	66.8	68.1	39.2	32.7	27.2
STEENBRAS LOWER	33 517	50.2	51.7	38.9	36.4	27.5	38.7
STEENBRAS UPPER	31 767	96.5	96.6	65.0	59.8	56.6	56.8
THEEWATERSKLOOF	480 188	50.8	51.3	36.2	11.9	15.4	31.8
VOËLVLEI	164 095	51.0	51.6	55.7	14.2	18.4	21.5
WEMMERSHOEK	58 644	44.9	47.0	44.3	48.6	36.1	48.9
TOTAL STORED	898 221	487 401	493 373	413 301	191 416	195 178	282 963
% STORAGE		54.3%	54.9%	46.0%	21.3%	21.7%	31.5%

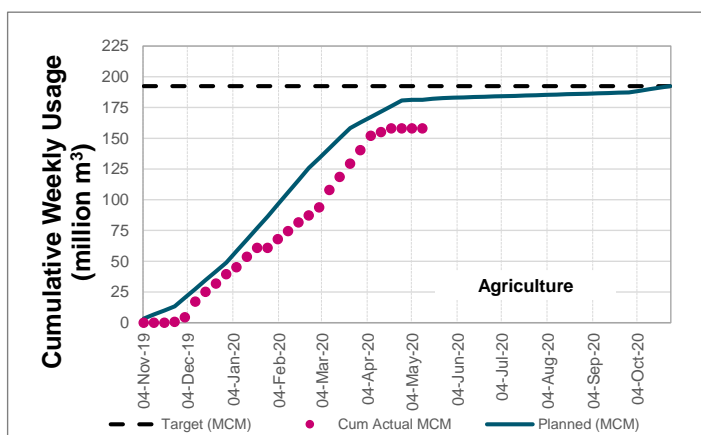
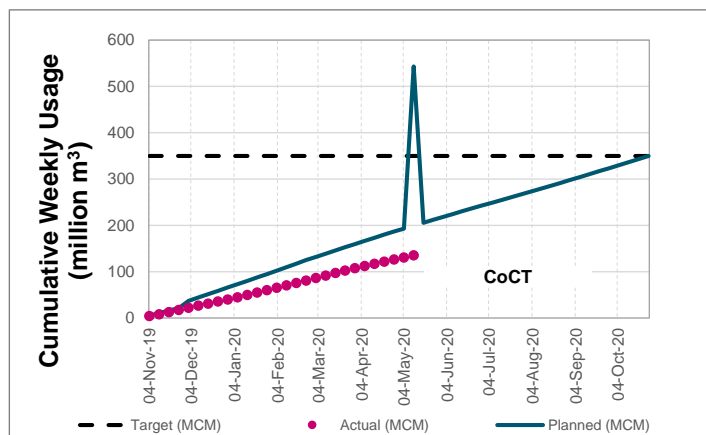
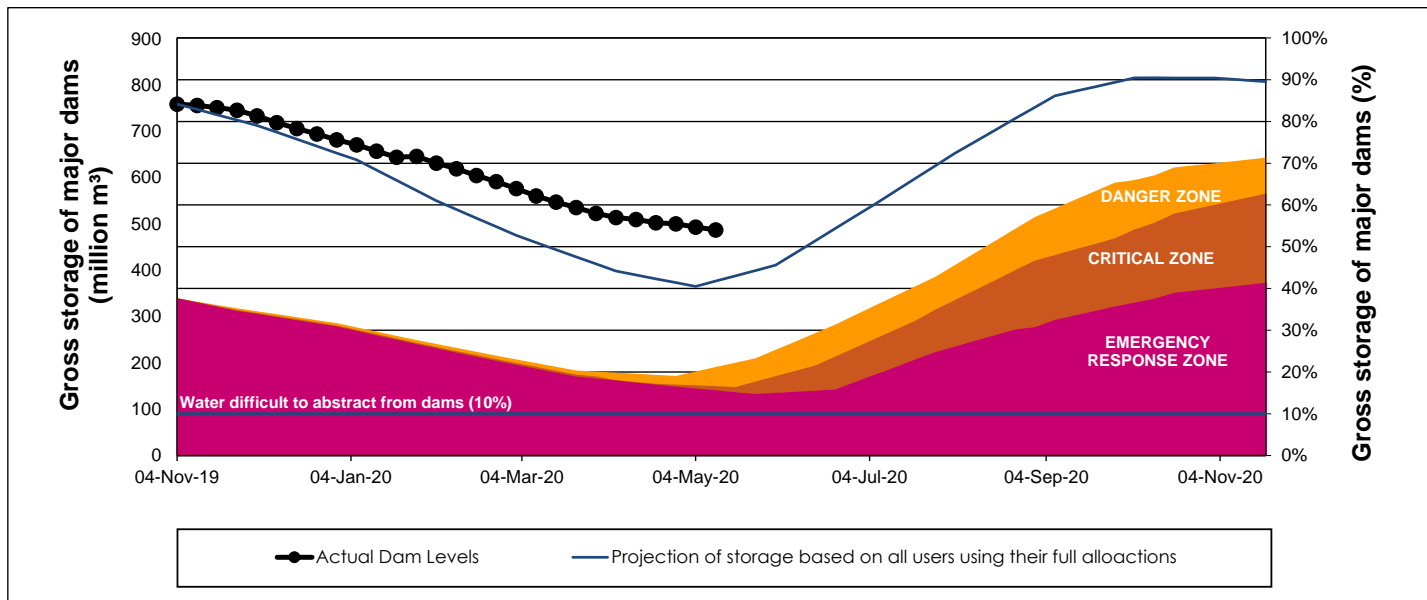
WCWSS Storage Record (2008 - Present)



WCWSS Comparative Storage Graph (5 Years)



WCWSS Dam Storage and Water Use Tracking



Water Stored in Minor Dams

Overall Percentage Full **50.2**

Weekly Change **2.34**

MINOR DAMS	STORAGE						
	CAPACITY	%	%	%	%	%	%
	MI	11 May 2020	Previous week	2019	2018	2017	2016
ALEXANDRA (Table Mountain)	126	33.9	34.5	0.0	73.0	30.6	20.4
DE VILLIERS (Table Mountain)	243	94.0	94.4	60.2	49.7	43.0	91.4
HELY-HUTCHINSON (Table Moun)	925	12.5	0.0	3.9	69.7	98.6	64.1
KLEINPLAATS (Simon's Town)	1 368	37.7	38.4	44.0	38.2	40.8	31.2
LAND-EN-ZEEZICHT (Helderberg)	451	61.1	59.9	98.5	89.3	73.3	17.0
LEWIS GAY (Simon's Town)	182	0.0	0.0	0.0	66.7	11.8	1.7
VICTORIA (Table Mountain)	128	73.7	75.3	4.2	28.1	70.1	0.0
WOODHEAD (Table Mountain)	954	97.7	98.4	55.9	59.1	72.3	77.0
Total Stored	4 377	2195.9	2093.4	1759.9	2494.9	2735.1	2066.1
Percentages stored		50.2	47.8	40.2	57.0	62.5	47.2

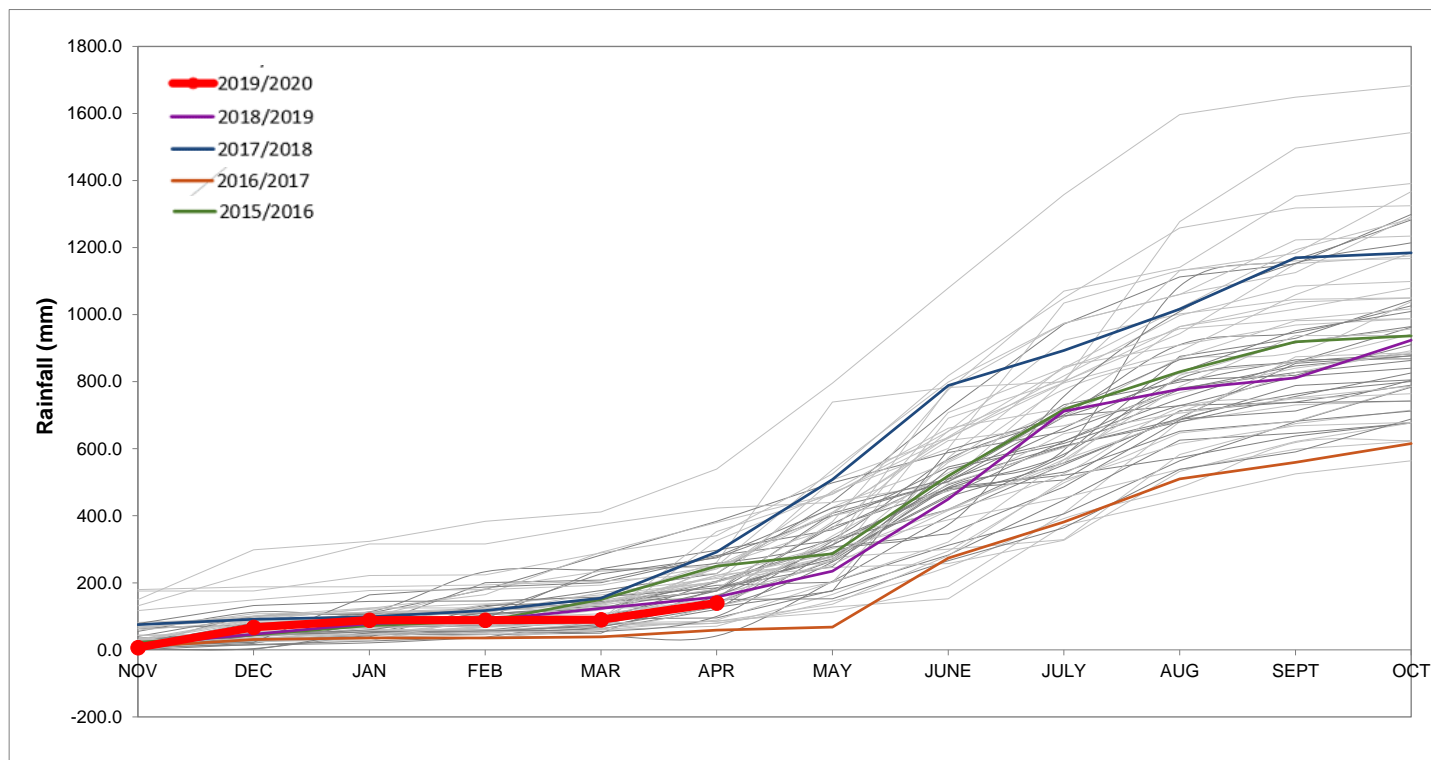
Rainfall Recorded

RAINFALL (mm)	04-May	05-May	06-May	07-May	08-May	09-May	10-May	May	
								Total*	LT Average
Blackheath Upper	0.0	0.0	0.0	0.0	0.0	0.0	0.0	11.3	56.4
Brooklands	0.0	0.0	0.0	0.0	0.0	0.0	0.0	9.0	109.3
Newlands	0.0	0.0	0.0	0.0	0.0	0.0	0.0	8.8	210.3
Steenbras	0.0	0.0	0.0	0.0	0.0	0.0	0.0	16.5	117.7
Table Mountain (Woodhead)	0.0	0.0	0.0	0.0	0.0	0.0	0.0	34.0	189.5
Theewaterskloof	0.0	0.0	0.0	0.0	0.0	0.0	0.0	4.9	48.7
Tygerberg	0.0	0.0	0.0	0.0	0.0	0.0	0.0	1.4	60.3
Voëlvele	0.0	0.0	0.0	0.0	0.0	0.0	0.0	2.7	70.8
Wemmershoek	0.0	0.0	0.0	0.0	0.0	0.0	0.0	0.6	121.6
Wynberg	0.0	0.0	0.0	0.0	0.0	0.0	0.0	2.0	147.7

Notes: *Total/cummulative rainfall for month indicated above
LT: Long Term

Accumulated Monthly Rainfall at Wemmershoek

Note: Wemmershoek station used due to long record and mountaneous location



Drinking Water Quality

SAMPLE PASS RATE

Month	Water Quality Compliance (%)	Target (%)
Jan-19	99.00	98
Feb-19	99.05	98
Mar-19	99.01	98
Apr-19	99.10	98
May-19	99.08	98
Jun-19	99.09	98
Jul-19	99.04	98
Aug-19	99.02	98
Sep-19	98.99	98
Oct-19	99.03	98
Nov-19	99.14	98
Dec-19	99.09	98
Jan-20	99.07	98
Feb-20	99.08	98
Mar-20	99.17	98

Notes:

This table shows CCT drinking water quality compliance according to the South African National Standard 241:2015. Compliance, measured against all prescribed chemical and microbiological components, consistently exceeds the very high CCT target of 98%. (Overall compliance percentages of continuous sampling and analysis are released on a monthly basis.)