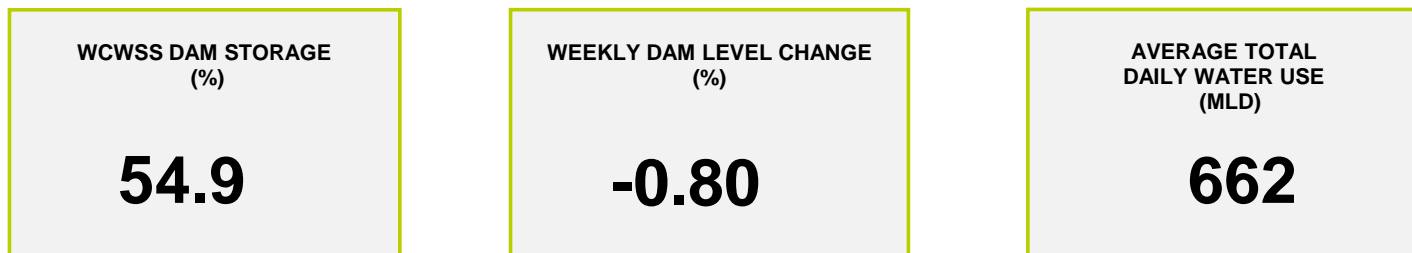
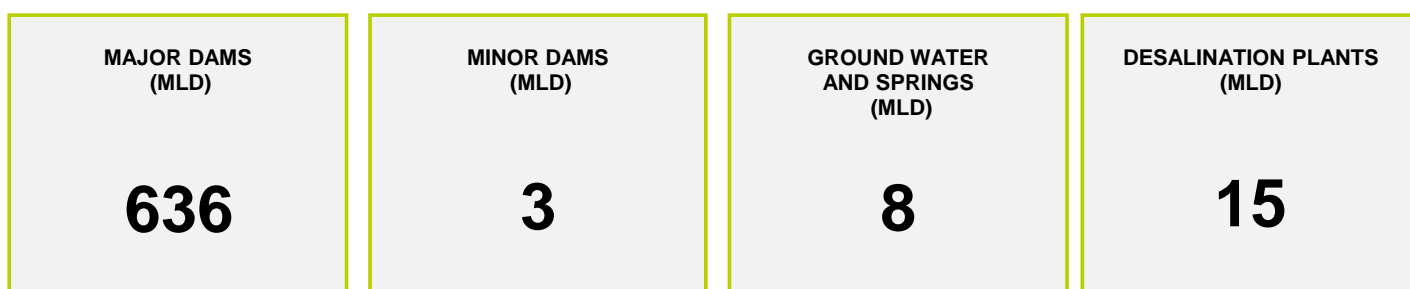




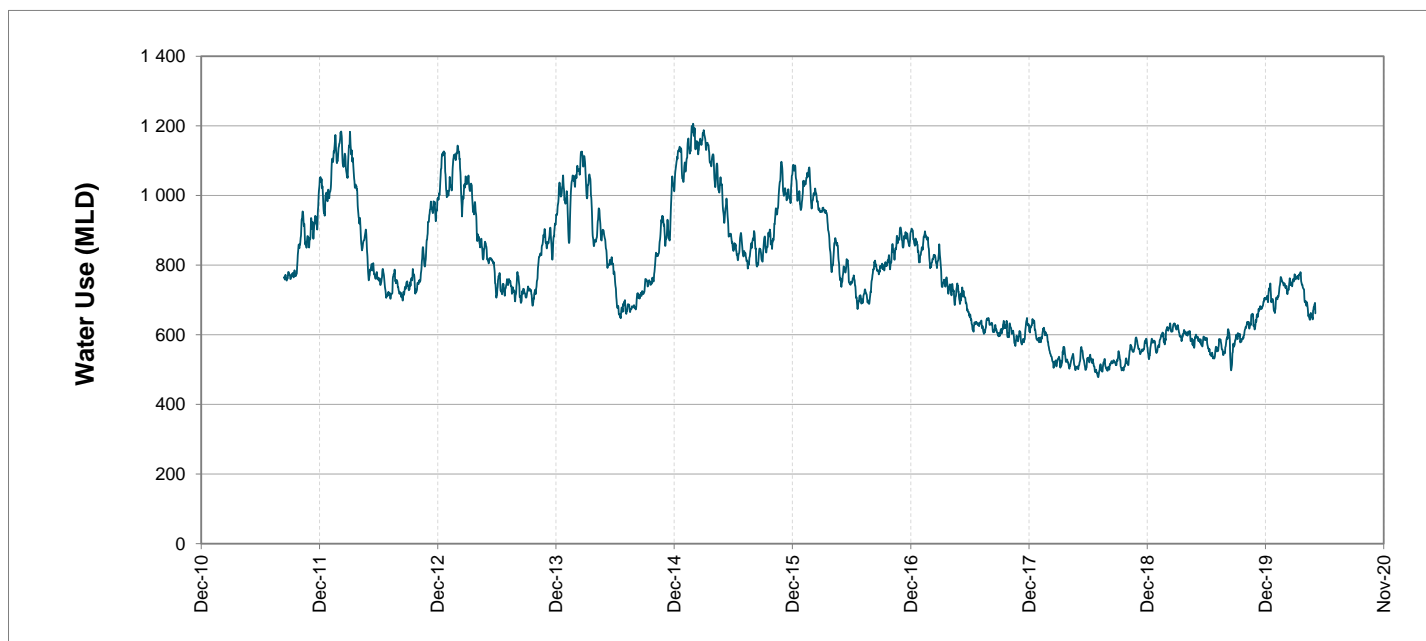
Headline Statistics



Water Production from Different Sources



Overall Water Usage Trend (2010 - Present)



WCWSS means Western Cape Water Supply System

MLD means million litres per day

More information on Water Saving and Restrictions is available on the City of Cape Town's 'ThinkWater' website

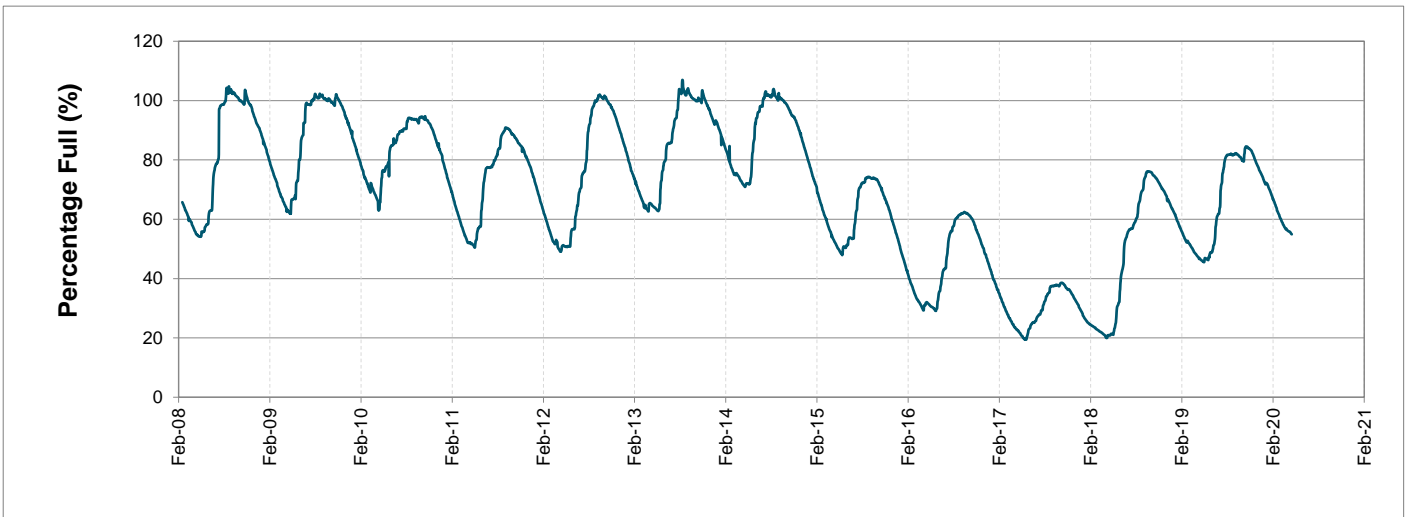
Water Stored in Major Dams (WCWSS)

Overall Percentage Full **54.9%**

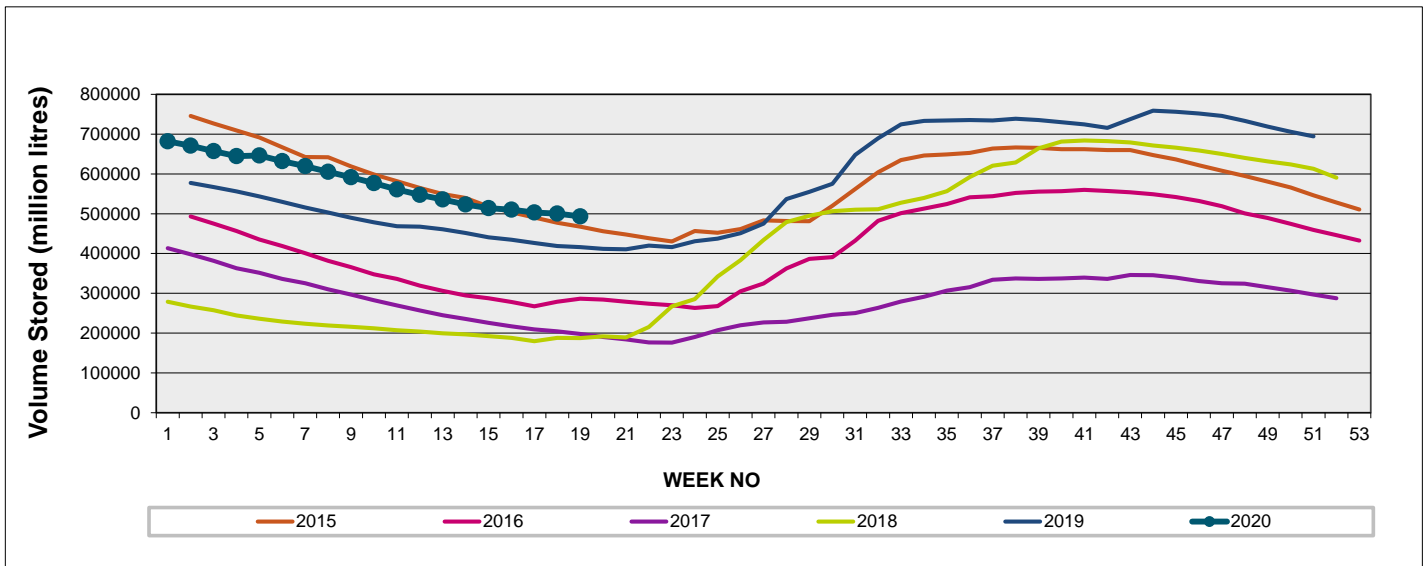
Weekly Change **-0.8%**

MAJOR DAMS (WCWSS)	STORAGE						
	CAPACITY	%	%	%	%	%	%
	MI	04 May 2020	Previous week	2019	2018	2017	2016
BERG RIVER	130 010	66.8	67.4	67.9	38.3	33.2	27.2
STEENBRAS LOWER	33 517	51.7	53.2	40.1	37.8	29.2	40.4
STEENBRAS UPPER	31 767	96.6	96.7	66.6	60.6	57.1	56.0
THEEWATERSKLOOF	480 188	51.3	52.0	36.6	11.3	16.4	32.5
VOËLVLEI	164 095	51.6	52.5	56.4	14.5	18.8	21.8
WEMMERSHOEK	58 644	47.0	48.8	45.9	47.5	36.0	49.7
TOTAL STORED	898 221	493 373	500 571	417 805	187 509	201 858	287 897
% STORAGE		54.9%	55.7%	46.5%	20.9%	22.5%	32.1%

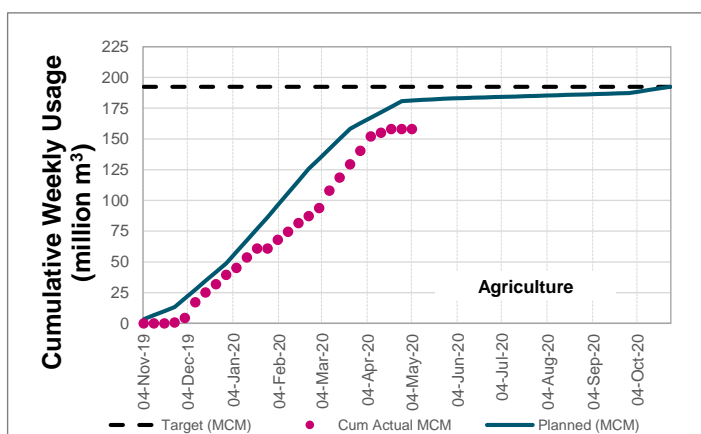
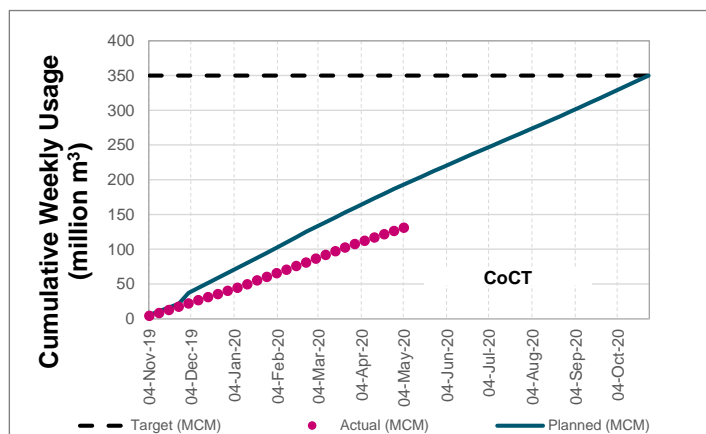
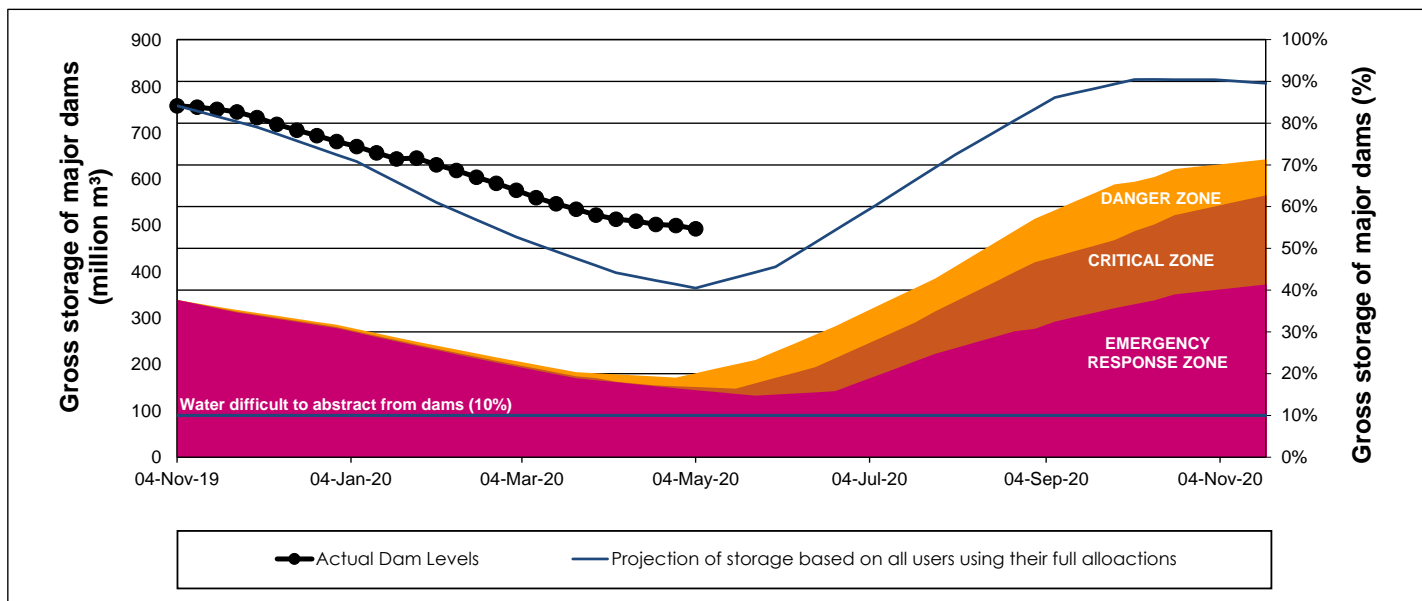
WCWSS Storage Record (2008 - Present)



WCWSS Comparative Storage Graph (5 Years)



WCWSS Dam Storage and Water Use Tracking



Water Stored in Minor Dams

Overall Percentage Full **47.8**

Weekly Change **-0.08**

MINOR DAMS	STORAGE						
	CAPACITY	%	%	%	%	%	%
	MI	04 May 2020	Previous week	2019	2018	2017	2016
ALEXANDRA (Table Mountain)	126	34.5	33.7	0.0	69.8	30.7	32.9
DE VILLIERS (Table Mountain)	243	94.4	94.0	60.1	53.6	43.9	83.4
HELY-HUTCHINSON (Table Mountain)	925	0.0	0.0	0.0	74.5	98.6	71.9
KLEINPLAATS (Simon's Town)	1 368	38.4	39.5	44.9	38.8	41.0	31.2
LAND-EN-ZEEZICHT (Helderberg)	451	59.9	58.8	97.9	88.9	74.8	15.9
LEWIS GAY (Simon's Town)	182	0.0	0.0	0.0	64.5	11.8	3.6
VICTORIA (Table Mountain)	128	75.3	74.0	0.0	33.9	70.8	11.6
WOODHEAD (Table Mountain)	954	98.4	98.1	52.0	58.4	72.5	78.4
Total Stored	4 377	2093.4	2096.9	1688.9	2547.7	2749.0	2161.5
Percentages stored		47.8	47.9	38.6	58.2	62.8	49.4

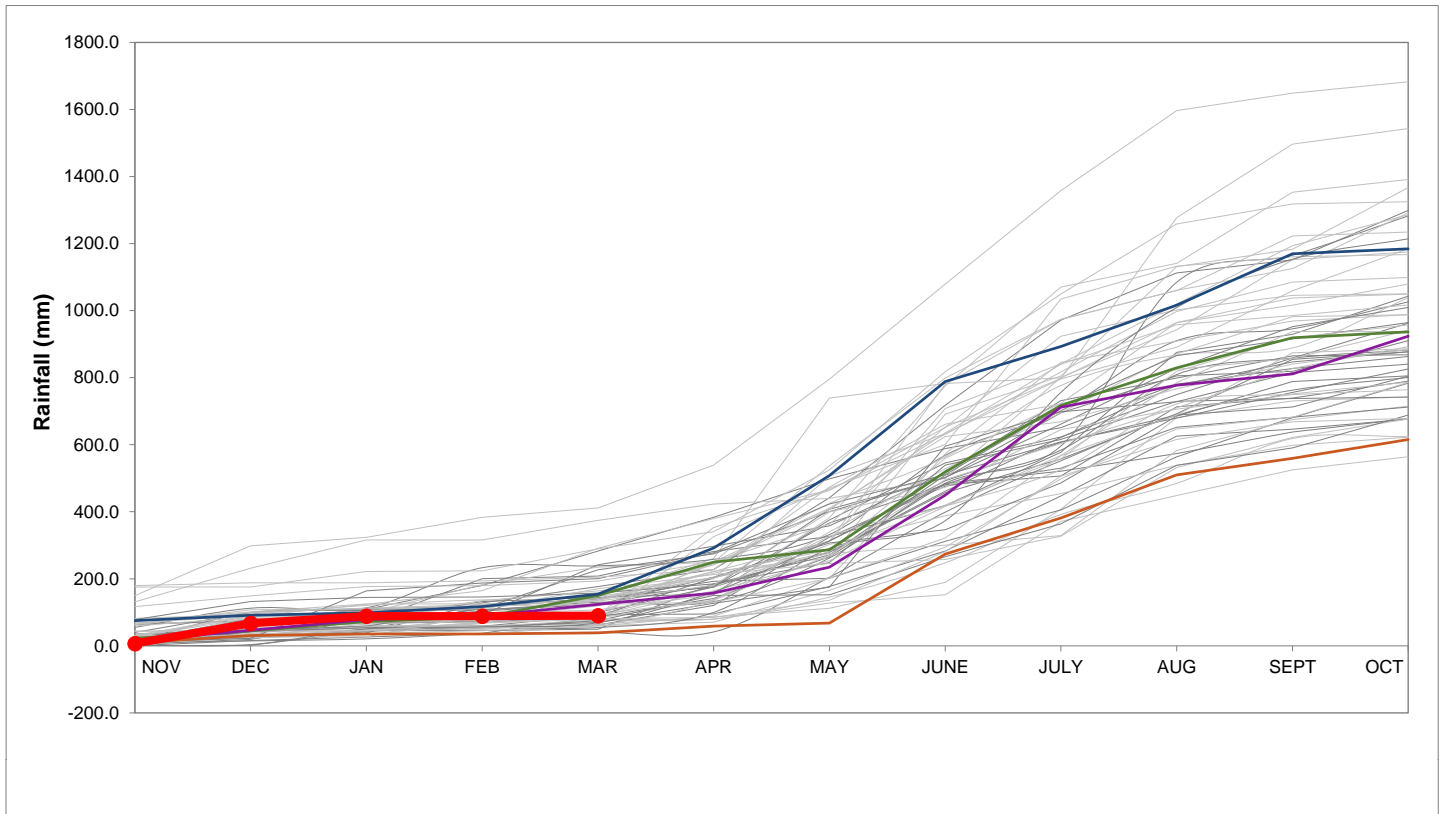
Rainfall Recorded

RAINFALL (mm)	27-Apr	28-Apr	29-Apr	30-Apr	01-May	02-May	03-May	May	
								Total*	LT Average
Blackheath Upper	0.0	0.0	0.0	0.0	0.0	4.5	6.8	11.3	56.4
Brooklands	0.0	0.0	0.0	0.0	0.0	9.0	0.0	9.0	109.3
Newlands	0.0	0.0	0.0	0.0	0.0	4.5	4.3	8.8	210.3
Steenbras	0.0	0.0	0.0	0.0	0.0	16.5	0.0	16.5	117.7
Table Mountain (Woodhead)	0.0	0.0	0.0	0.0	0.0	32.0		32.0	189.5
Theewaterskloof	0.0	0.0	0.0	0.0	0.0	1.9	3.0	4.9	48.7
Tygerberg	0.0	0.0	0.0	0.0	0.0	1.4	0.0	1.4	60.3
Voëlvllei	0.0	0.0	0.0	0.0	0.0	1.7	0.1	1.8	70.8
Wemmershoek	0.0	0.0	0.0	0.0	0.0	0.6	0.0	0.6	121.6
Wynberg	0.0	0.0	0.0	0.0	0.0	2.0	0.0	2.0	147.7

Notes: *Total/cummulative rainfall for month indicated above
 LT: Long Term

Accumulated Monthly Rainfall at Wemmershoek

Note: Wemmershoek station used due to long record and mountaneous location



Drinking Water Quality

SAMPLE PASS RATE

Month	Water Quality Compliance (%)	Target (%)
Jan-19	99.00	98
Feb-19	99.05	98
Mar-19	99.01	98
Apr-19	99.10	98
May-19	99.08	98
Jun-19	99.09	98
Jul-19	99.04	98
Aug-19	99.02	98
Sep-19	98.99	98
Oct-19	99.03	98
Nov-19	99.14	98
Dec-19	99.09	98
Jan-20	99.07	98
Feb-20	99.08	98
Mar-20	99.17	98

Notes:

This table shows CCT drinking water quality compliance according to the South African National Standard 241:2015. Compliance, measured against all prescribed chemical and microbiological components, consistently exceeds the very high CCT target of 98%. (Overall compliance percentages of continuous sampling and analysis are released on a monthly basis.)