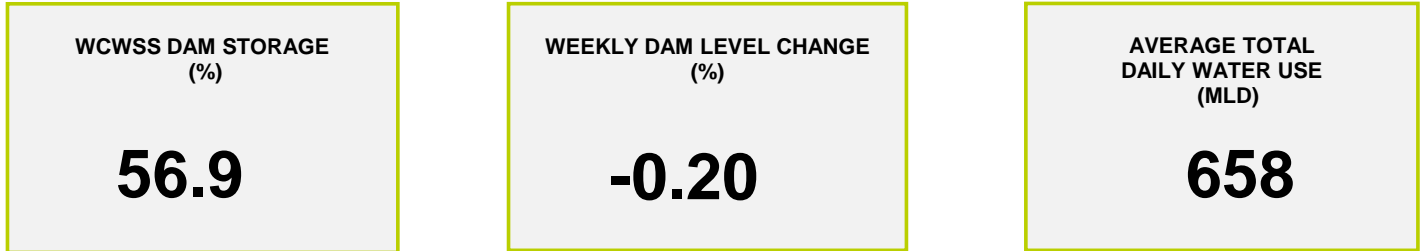
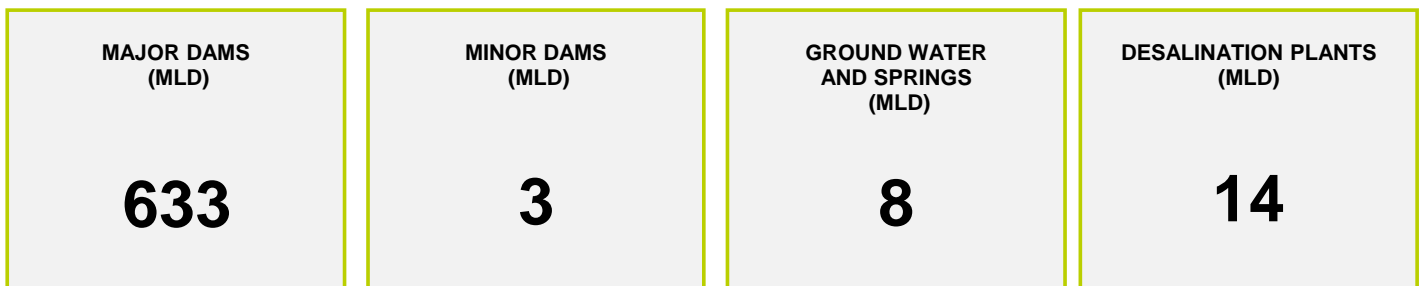




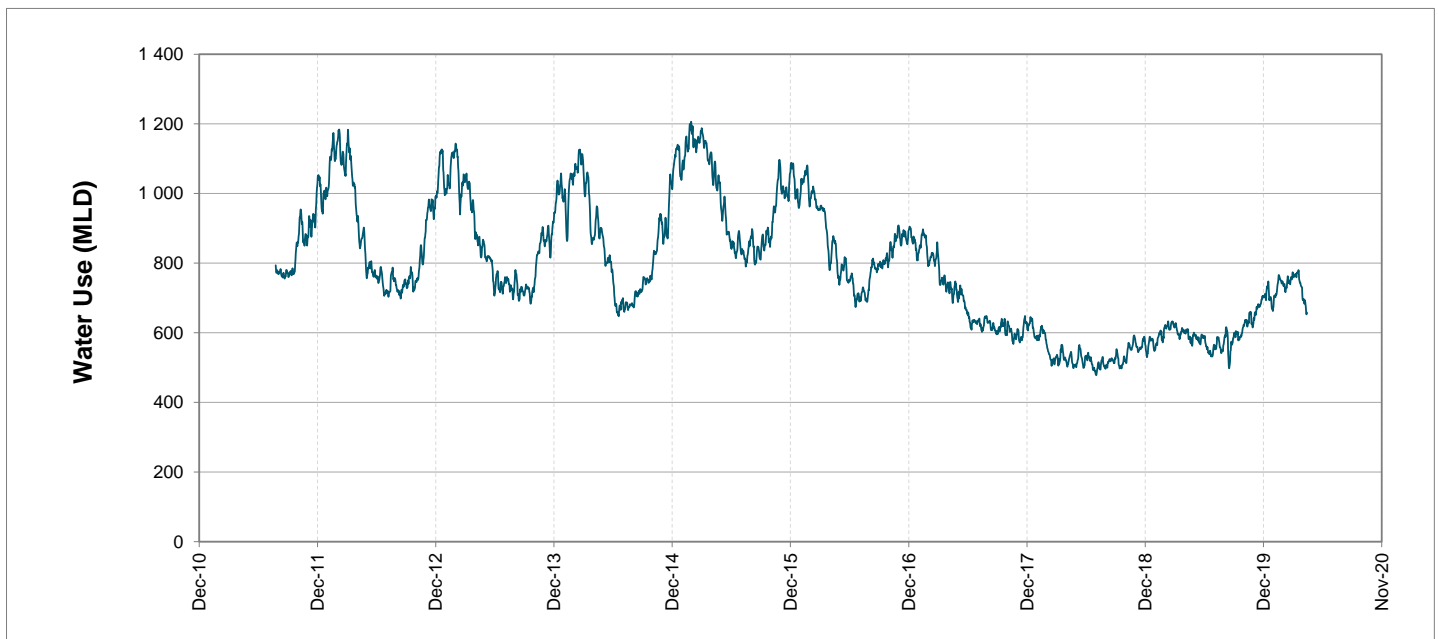
## Headline Statistics



## Water Production from Different Sources



## Overall Water Usage Trend (2010 - Present)



WCWSS means Western Cape Water Supply System

MLD means million litres per day

More information on Water Saving and Restrictions is available on the City of Cape Town's 'ThinkWater' website

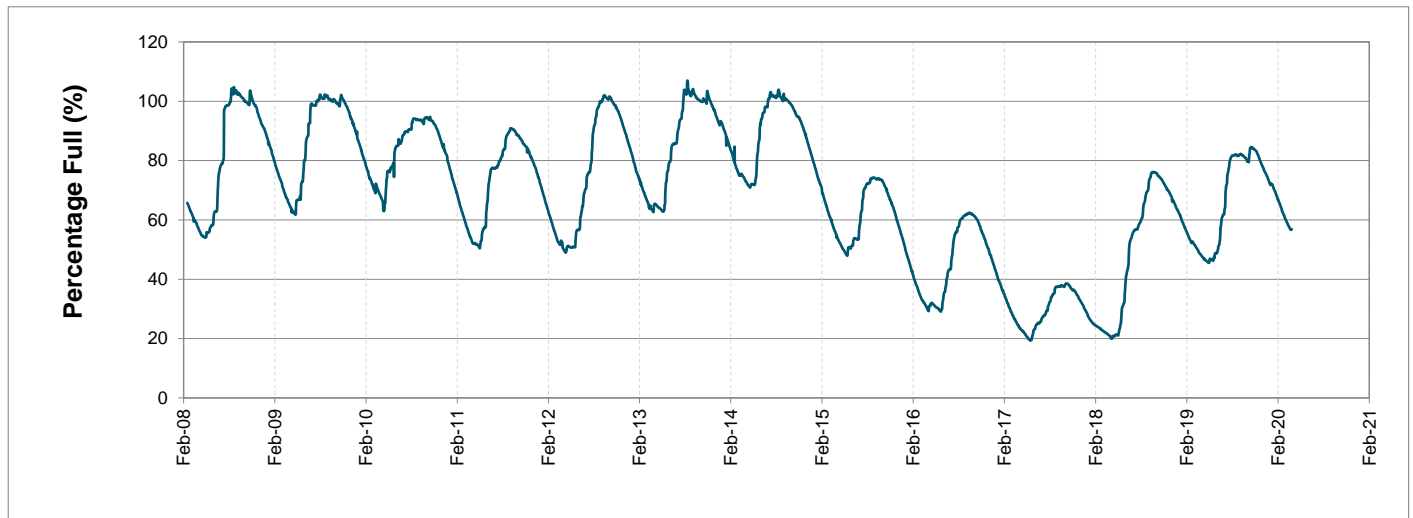
# Water Stored in Major Dams (WCWSS)

Overall Percentage Full **56.9%**

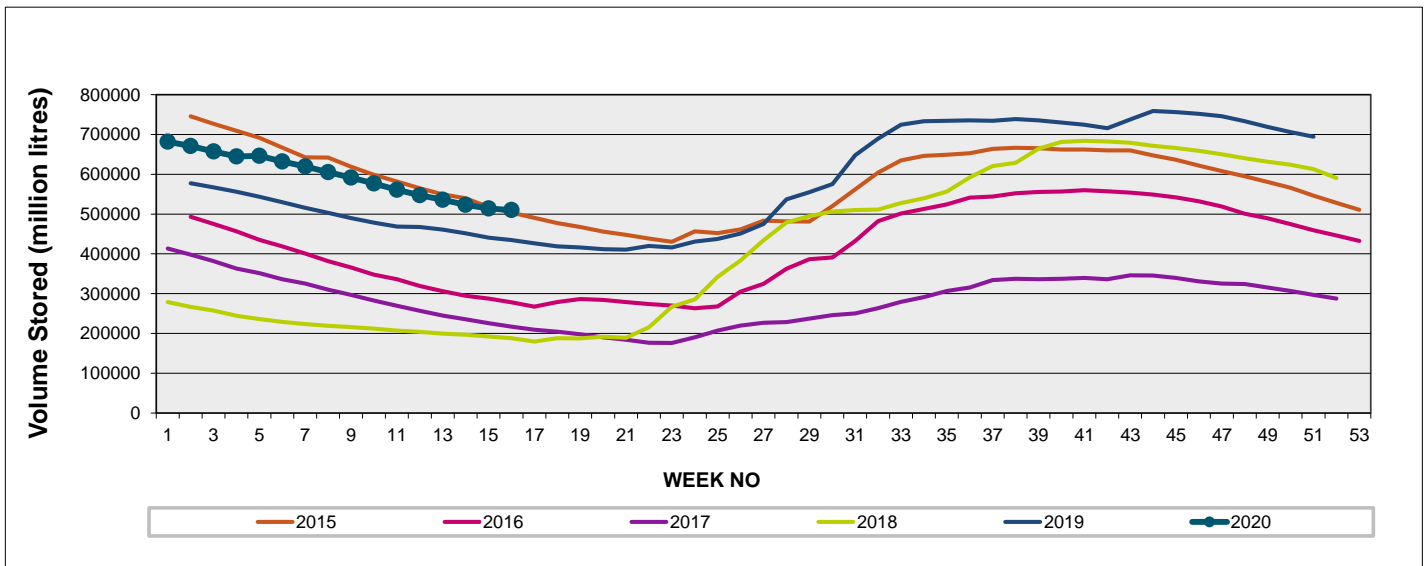
Weekly Change **-0.2%**

MAJOR DAMS (WCWSS)	STORAGE						
	CAPACITY	%	%	%	%	%	%
	MI	14 April 2020	Previous week	2019	2018	2017	2016
BERG RIVER	130 010	68.3	67.4	69.4	42.3	34.1	23.4
STEENBRAS LOWER	33 517	57.0	58.6	43.8	40.3	34.0	38.1
STEENBRAS UPPER	31 767	96.9	96.9	69.2	67.9	49.7	58.8
THEEWATERSKLOOF	480 188	52.8	53.0	37.9	10.4	19.4	31.6
VOËLVLEI	164 095	53.6	54.1	58.5	14.2	21.4	19.0
WEMMERSHOEK	58 644	52.0	53.3	51.0	44.0	36.0	48.7
<b>TOTAL STORED</b>	<b>898 221</b>	<b>510 710</b>	<b>512 727</b>	<b>435 022</b>	<b>189 267</b>	<b>220 908</b>	<b>273 437</b>
<b>% STORAGE</b>		<b>56.9%</b>	<b>57.1%</b>	<b>48.4%</b>	<b>21.1%</b>	<b>24.6%</b>	<b>30.4%</b>

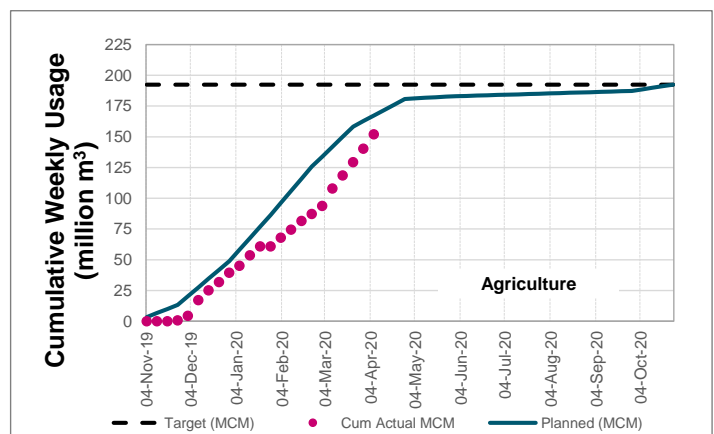
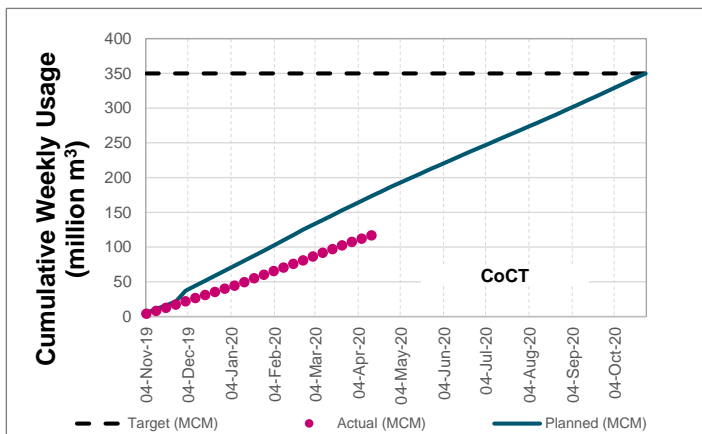
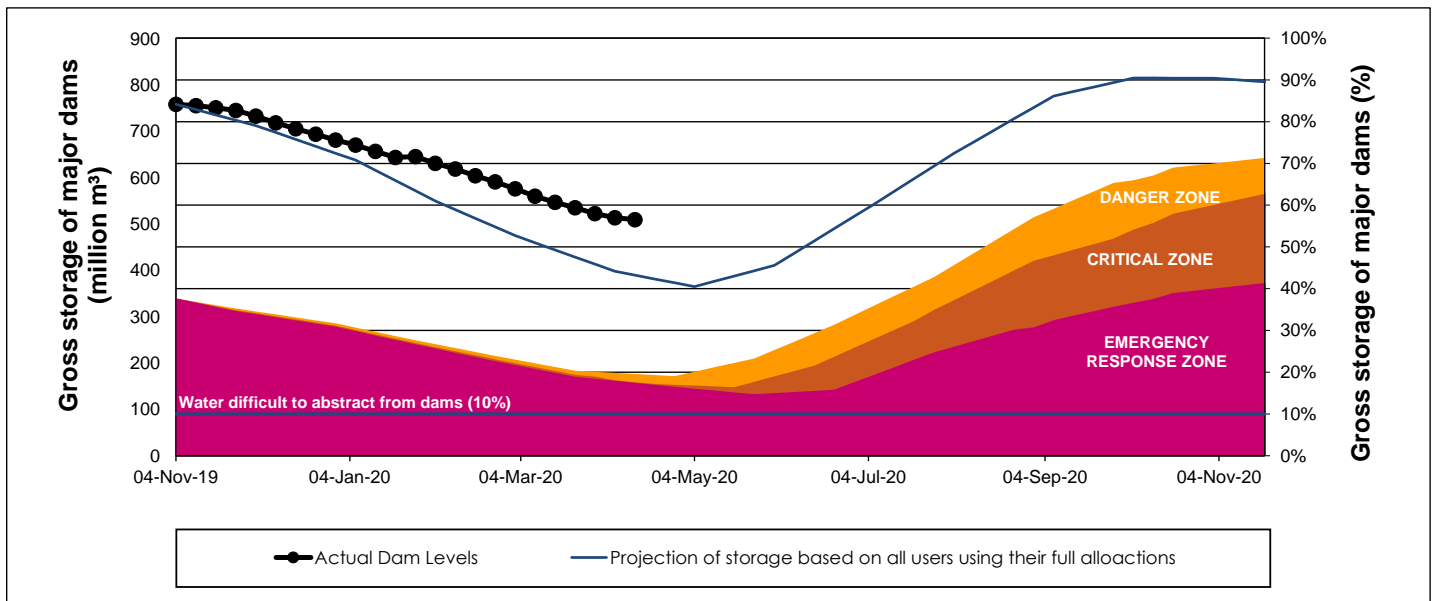
## WCWSS Storage Record (2008 - Present)



## WCWSS Comparative Storage Graph (5 Years)



# WCWSS Dam Storage and Water Use Tracking



## Water Stored in Minor Dams

Overall Percentage Full **47.3**

Weekly Change **1.54**

MINOR DAMS	STORAGE						
	CAPACITY	%	%	%	%	%	%
	MI	14 April 2020	Previous week	2019	2018	2017	2016
ALEXANDRA (Table Mountain)	126	33.8	32.3	0.0	54.7	30.7	33.5
DE VILLIERS (Table Mountain)	243	94.0	93.2	60.1	57.1	46.3	54.1
HELY-HUTCHINSON (Table Mountain)	925	0.0	0.0	0.0	77.1	96.8	64.8
KLEINPLAATS (Simon's Town)	1 368	40.5	41.1	46.9	40.6	43.6	32.6
LAND-EN-ZEEZICHT (Helderberg)	451	60.5	58.4	96.0	91.4	80.4	12.6
LEWIS GAY (Simon's Town)	182	0.0	0.0	0.0	57.7	14.3	1.5
VICTORIA (Table Mountain)	128	74.3	72.7	0.0	48.9	72.7	48.7
WOODHEAD (Table Mountain)	954	93.0	86.8	61.3	58.4	80.0	83.2
<b>Total Stored</b>	<b>4 377</b>	<b>2069.4</b>	<b>2002.1</b>	<b>1795.5</b>	<b>2602.4</b>	<b>2877.0</b>	<b>2118.8</b>
<b>Percentages stored</b>		<b>47.3</b>	<b>45.7</b>	<b>41.0</b>	<b>59.5</b>	<b>65.7</b>	<b>48.4</b>

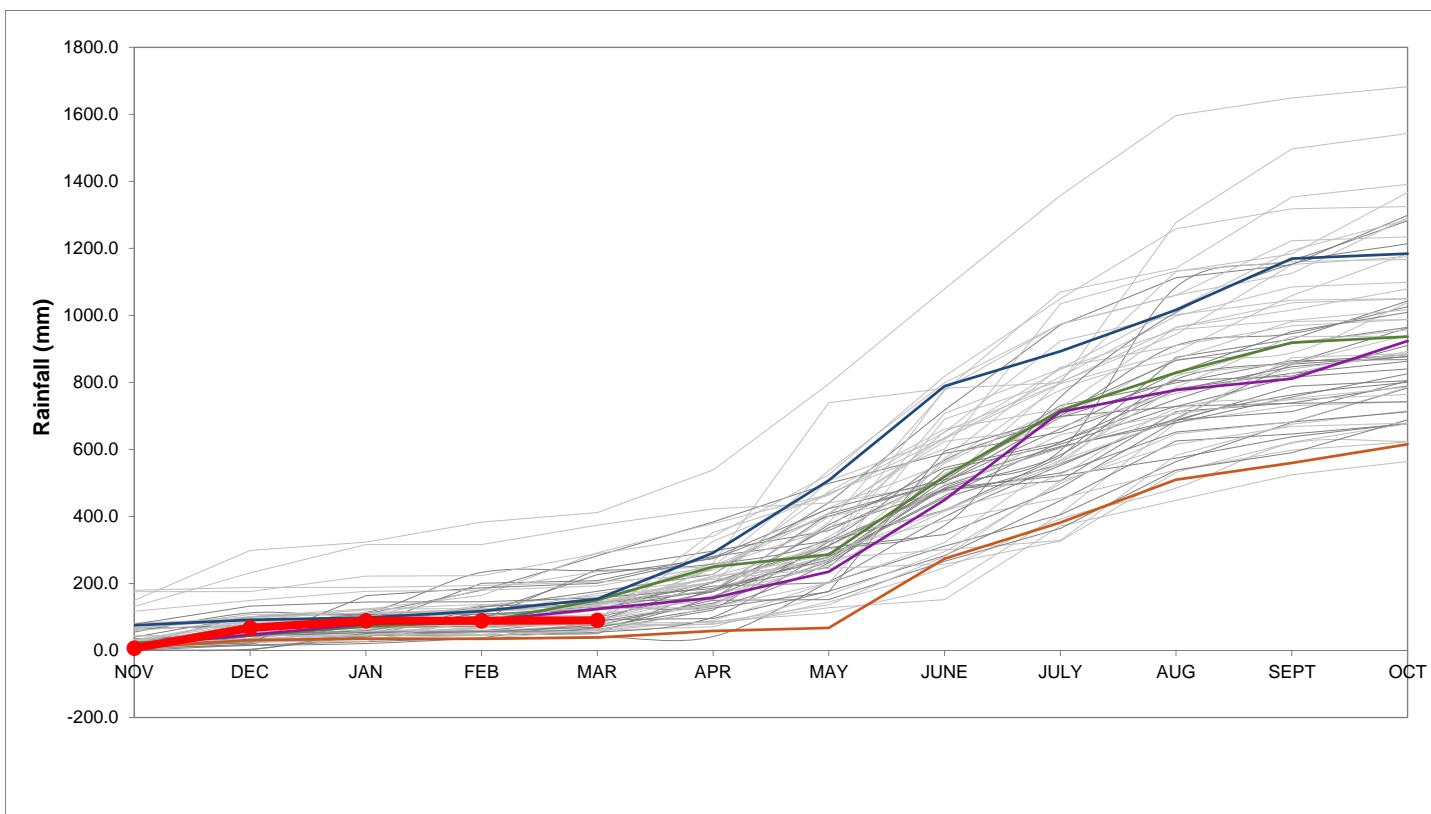
## Rainfall Recorded

RAINFALL (mm)	07-Apr	08-Apr	09-Apr	10-Apr	11-Apr	12-Apr	13-Apr	Apr	
								Total*	LT Average
Blackheath Upper	1.0	0.0	0.0	0.0	0.0	1.2	0.0	7.2	38.7
Brooklands	0.0	0.0	0.0	0.0	0.0	0.0	1.0	13.0	65.8
Newlands	0.0	0.0	0.0	0.0	102.0	0.0	0.0	105.5	110.8
Steenbras	2.0	0.0	0.0	0.0	11.3	0.0	0.0	27.4	83.9
Table Mountain (Woodhead)	0.0	0.0	0.0	3.0	80.0	0.0		109.0	126.4
Theewaterskloof	0.0	0.0	0.0	0.0	0.0	0.0	0.0	0.0	55.6
Tygerberg	0.0	0.0	0.0	0.0	16.3	0.0	0.0	20.8	37.2
Voëlvei	0.0	0.0	0.0	0.0	26.0	2.0	0.0	31.8	41.3
Wemmershoek	0.0	0.0	0.0	0.0	33.4	1.5	0.0	44.9	69.1
Wynberg	0.0	0.0	0.0	0.0	44.0	0.0	0.0	44.0	66.1

Notes: \*Total/cummulative rainfall for month indicated above  
LT: Long Term

## Accumulated Monthly Rainfall at Wemmershoek

Note: Wemmershoek station used due to long record and mountaneous location



## Drinking Water Quality

### SAMPLE PASS RATE

Month	Water Quality Compliance (%)	Target (%)
Dec-18	99.00	98
Jan-19	99.00	98
Feb-19	99.05	98
Mar-19	99.01	98
Apr-19	99.10	98
May-19	99.08	98
Jun-19	99.09	98
Jul-19	99.04	98
Aug-19	99.02	98
Sep-19	98.99	98
Oct-19	99.03	98
Nov-19	99.14	98
Dec-19	99.09	98
Jan-20	99.07	98
Feb-20	99.08	98

#### Notes:

This table shows CCT drinking water quality compliance according to the South African National Standard 241:2015. Compliance, measured against all prescribed chemical and microbiological components, consistently exceeds the very high CCT target of 98%. (Overall compliance percentages of continuous sampling and analysis are released on a monthly basis.)