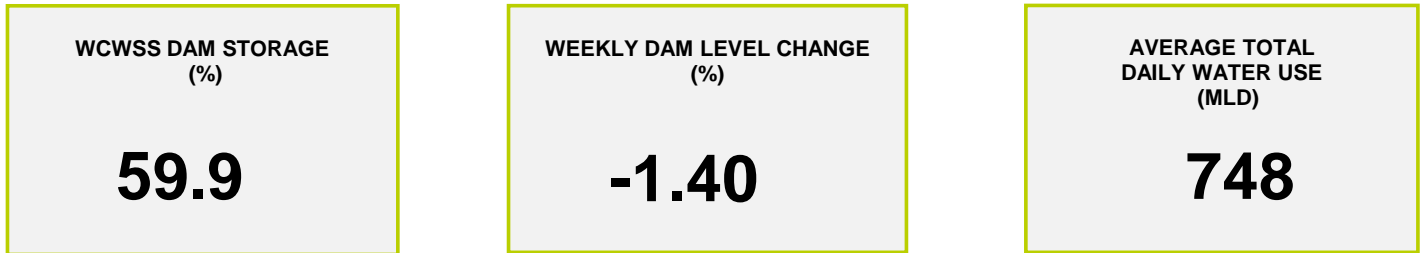
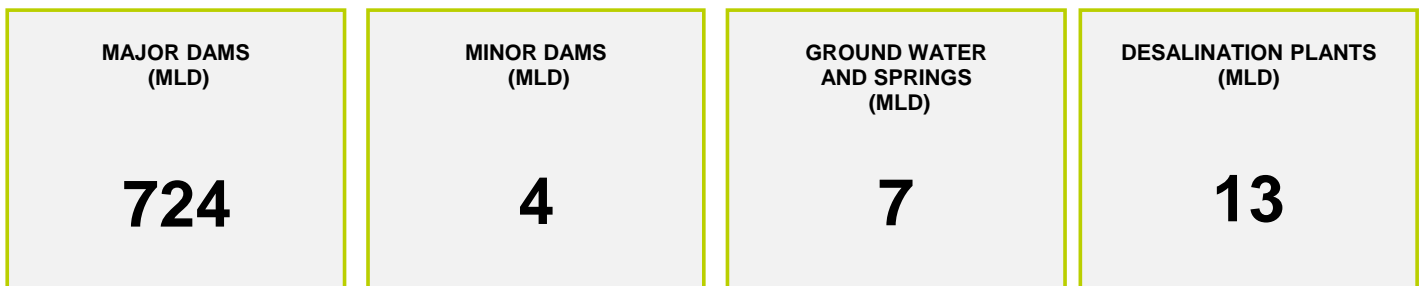




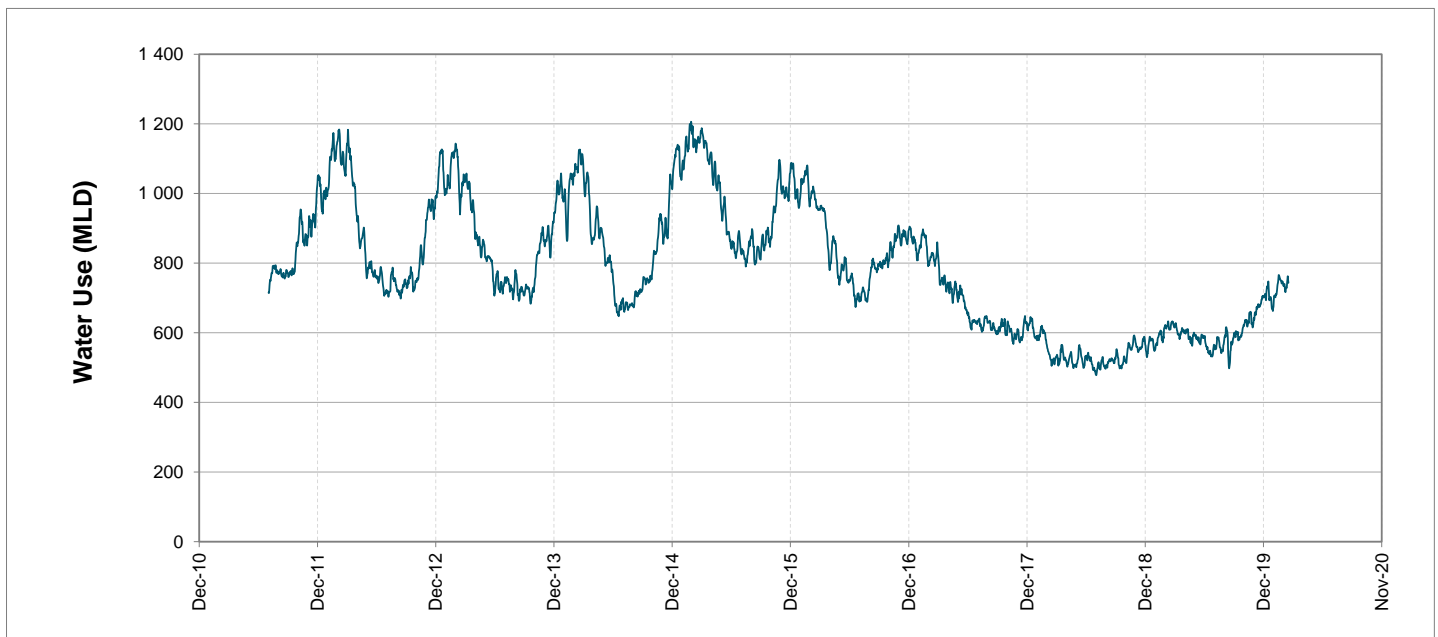
Headline Statistics



Water Production from Different Sources



Overall Water Usage Trend (2010 - Present)



WCWSS means Western Cape Water Supply System

MLD means million litres per day

More information on Water Saving and Restrictions is available on the City of Cape Town's 'ThinkWater' website

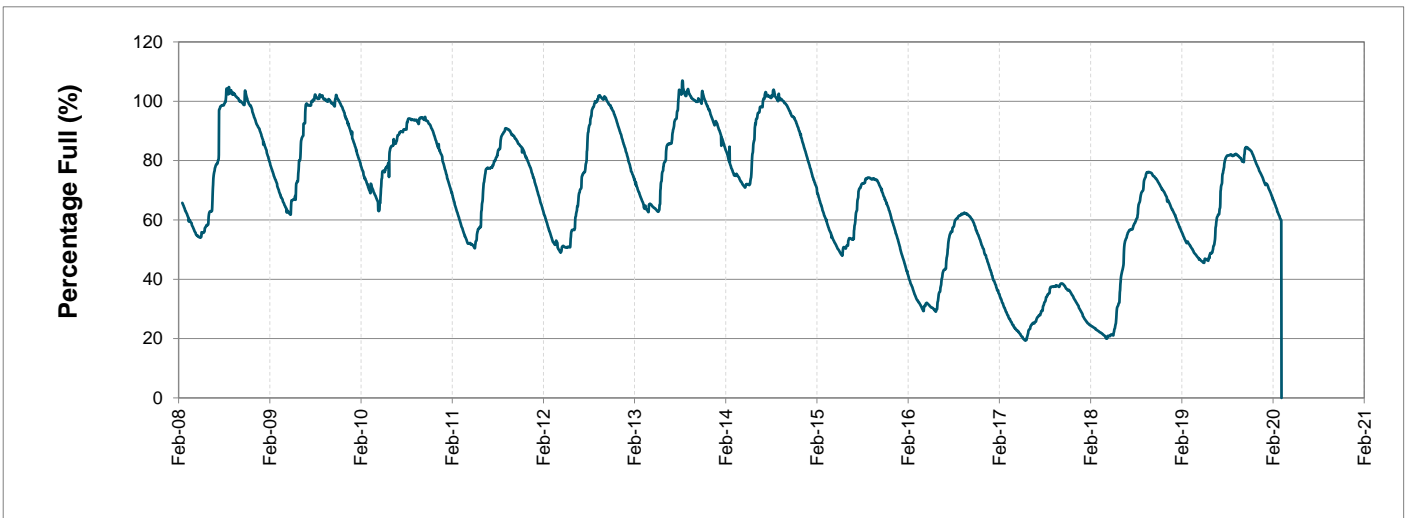
Water Stored in Major Dams (WCWSS)

Overall Percentage Full **59.9%**

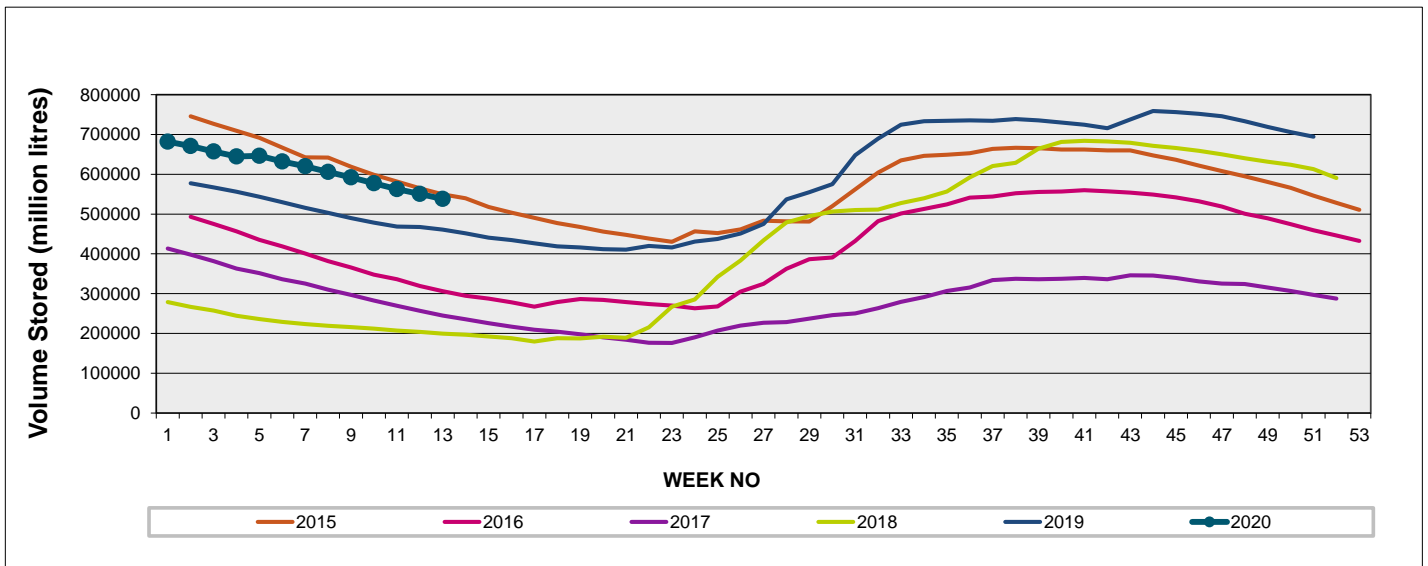
Weekly Change **-1.4%**

MAJOR DAMS (WCWSS)	STORAGE						
	CAPACITY	%	%	%	%	%	%
	MI	23 March 2020	Previous week	2019	2018	2017	2016
BERG RIVER	130 010	70.5	72.2	72.7	46.8	36.6	26.2
STEENBRAS LOWER	33 517	62.0	64.3	49.2	39.2	32.0	44.6
STEENBRAS UPPER	31 767	97.4	97.7	69.8	84.9	55.7	58.4
THEEWATERSKLOOF	480 188	55.5	56.8	40.2	10.6	23.2	35.7
VOËLVLEI	164 095	57.4	59.0	62.5	14.7	26.1	20.3
WEMMERSHOEK	58 644	57.1	58.9	56.9	43.8	36.0	50.2
TOTAL STORED	898 221	537 801	550 671	462 224	201 743	251 466	301 947
% STORAGE		59.9%	61.3%	51.5%	22.5%	28.0%	33.6%

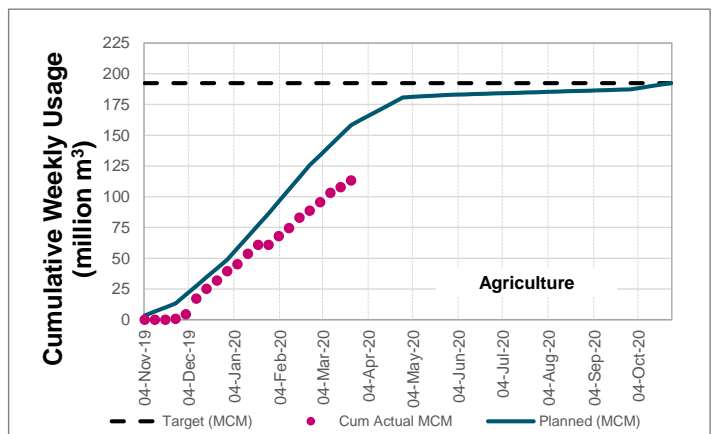
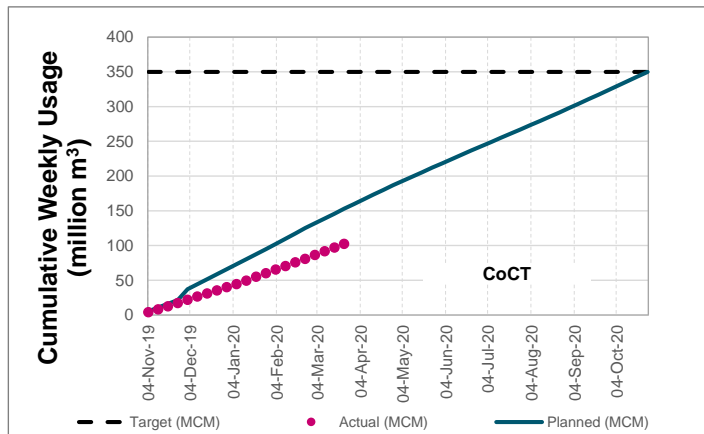
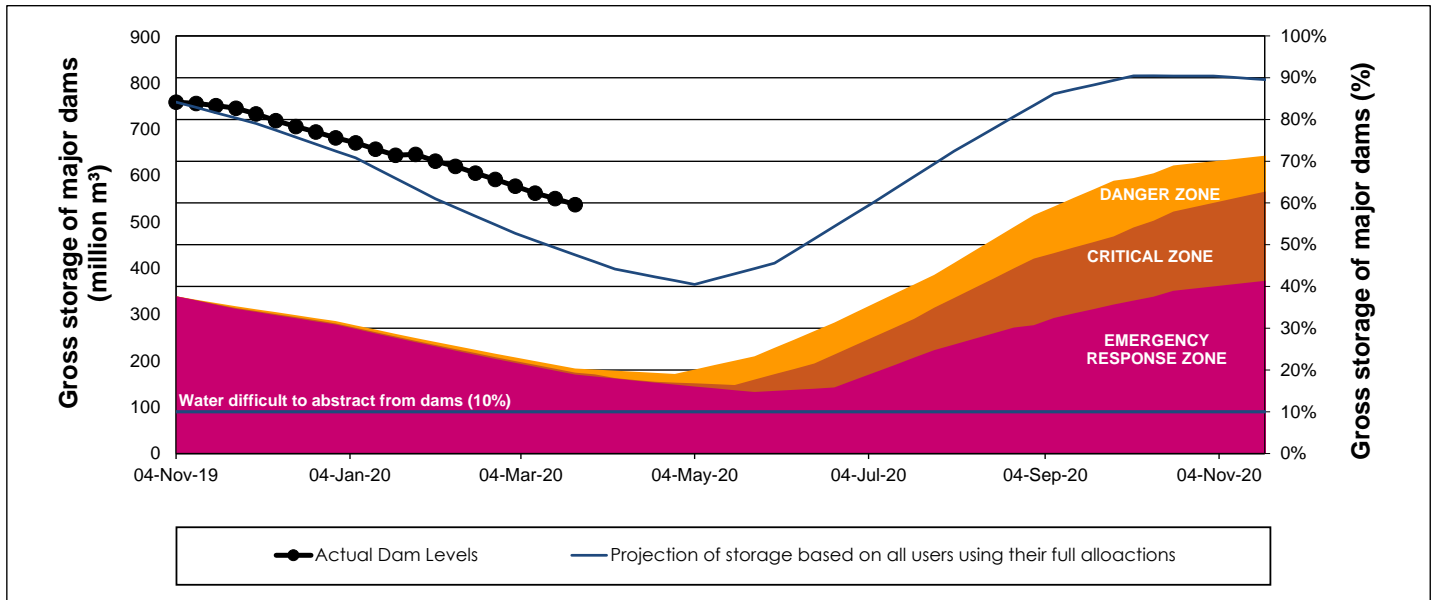
WCWSS Storage Record (2008 - Present)



WCWSS Comparative Storage Graph (5 Years)



WCWSS Dam Storage and Water Use Tracking



Water Stored in Minor Dams

Overall Percentage Full **47.0**

Weekly Change **-0.80**

MINOR DAMS	STORAGE						
	CAPACITY	%	%	%	%	%	%
	MI	23 March 2020	Previous week	2019	2018	2017	2016
ALEXANDRA (Table Mountain)	126	35.4	35.9	0.0	39.8	32.9	36.8
DE VILLIERS (Table Mountain)	243	94.0	94.8	60.6	54.4	48.9	66.4
HELY-HUTCHINSON (Table Moun)	925	0.0	0.0	35.8	94.7	94.2	74.8
KLEINPLAATS (Simon's Town)	1 368	41.0	42.1	47.5	39.7	43.9	35.3
LAND-EN-ZEEZICHT (Helderberg)	451	63.9	67.0	97.2	93.8	84.3	12.3
LEWIS GAY (Simon's Town)	182	0.0	0.0	0.0	53.3	34.1	5.1
VICTORIA (Table Mountain)	128	75.5	77.5	1.7	75.2	75.9	48.1
WOODHEAD (Table Mountain)	954	87.7	87.8	56.3	56.4	96.1	72.7
Total Stored	4 377	2055.6	2090.6	2105.5	2755.8	3088.1	2202.7
Percentages stored		47.0	47.8	48.1	63.0	70.6	50.3

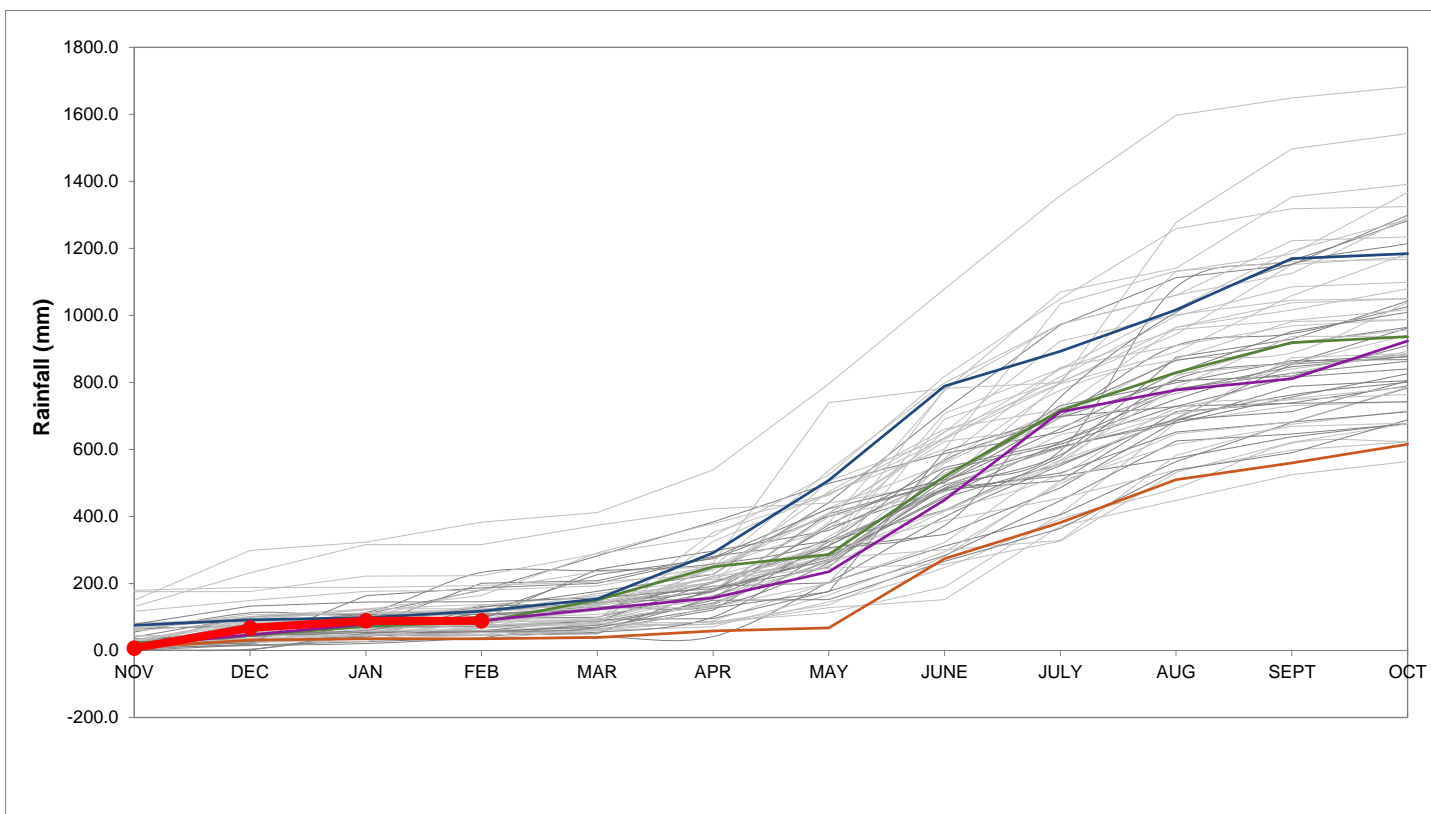
Rainfall Recorded

RAINFALL (mm)	16-Mar	17-Mar	18-Mar	19-Mar	20-Mar	21-Mar	22-Mar	Mar	
								Total*	LT Average
Blackheath Upper	0.0	0.0	0.0	0.0	0.0	0.0	0.0	0.0	19.2
Brooklands	0.0	0.0	0.0	0.5	0.0	0.0	0.0	2.5	35.6
Newlands	0.0	0.0	0.0	0.0	2.0	0.0	0.0	2.0	47.0
Steenbras	0.0	0.0	0.0	0.0	1.5	0.0	0.0	4.8	40.2
Table Mountain (Woodhead)	0.0	0.0	0.0	2.5	0.0	0.0		2.5	58.5
Theewaterskloof	0.0	0.0	0.0	0.0	0.0	0.0	0.0	27.3	25.3
Tygerberg	0.0	0.0	0.0	0.0	0.0	0.0	0.0	0.0	15.0
Voëlvei	0.0	0.0	0.0	0.0	0.0	0.0	0.0	0.0	12.1
Wemmershoek	0.0	0.0	0.0	0.0	0.0	0.0	0.0	0.0	29.9
Wynberg	0.0	0.0	0.0	0.0	0.0	0.0	0.0	0.0	26.3

Notes: *Total/cummulative rainfall for month indicated above
LT: Long Term

Accumulated Monthly Rainfall at Wemmershoek

Note: Wemmershoek station used due to long record and mountaneous location



Drinking Water Quality

SAMPLE PASS RATE

Month	Water Quality Compliance (%)	Target (%)
Dec-18	99.00	98
Jan-19	99.00	98
Feb-19	99.05	98
Mar-19	99.01	98
Apr-19	99.10	98
May-19	99.08	98
Jun-19	99.09	98
Jul-19	99.04	98
Aug-19	99.02	98
Sep-19	98.99	98
Oct-19	99.03	98
Nov-19	99.14	98
Dec-19	99.09	98
Jan-20	99.07	98
Feb-20	99.08	98

Notes:

This table shows CCT drinking water quality compliance according to the South African National Standard 241:2015. Compliance, measured against all prescribed chemical and microbiological components, consistently exceeds the very high CCT target of 98%. (Overall compliance percentages of continuous sampling and analysis are released on a monthly basis.)