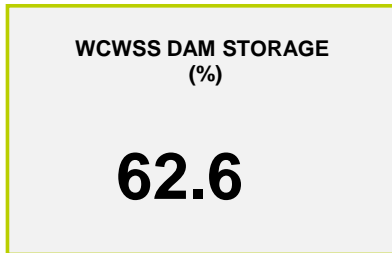
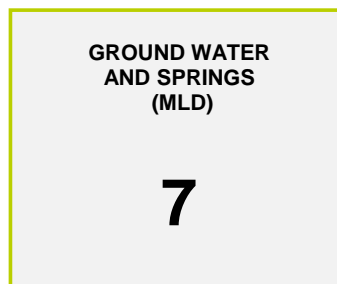
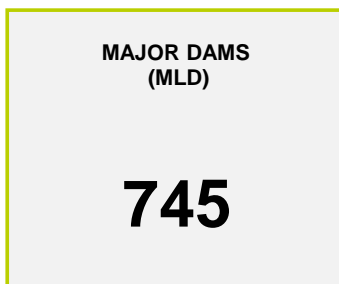




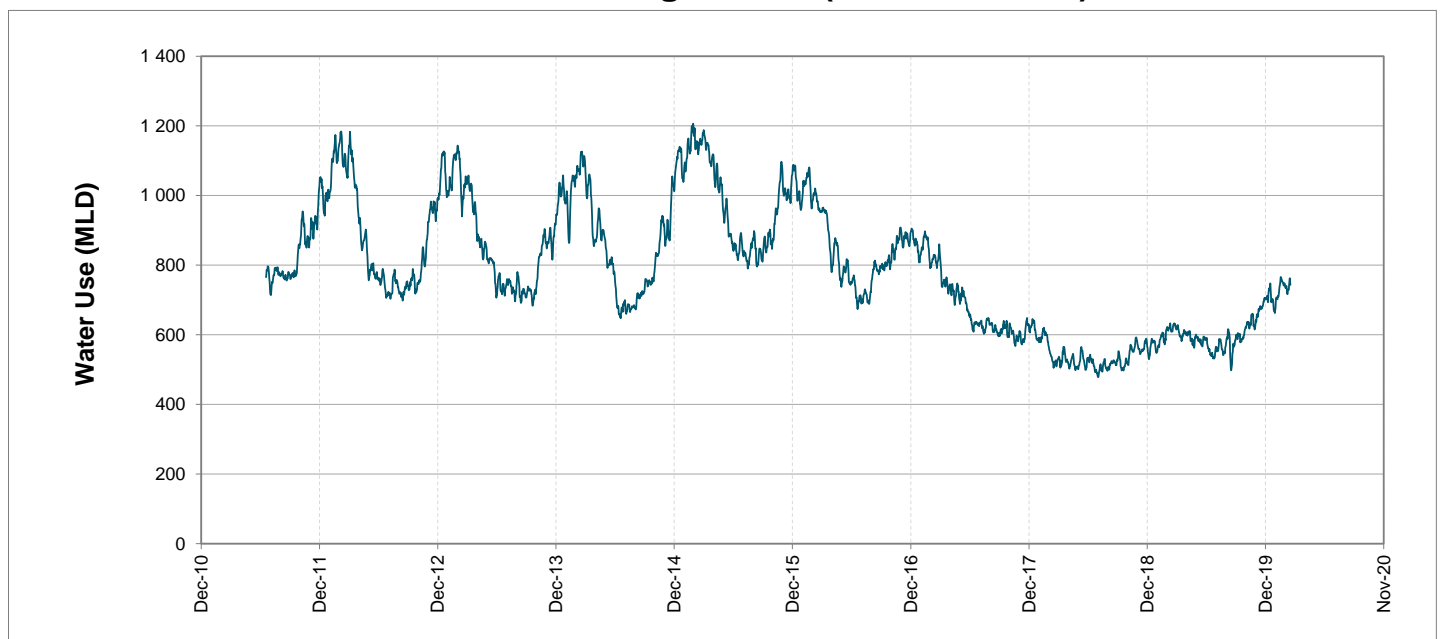
Headline Statistics



Water Production from Different Sources



Overall Water Usage Trend (2010 - Present)



WCWSS means Western Cape Water Supply System

MLD means million litres per day

More information on Water Saving and Restrictions is available on the City of Cape Town's 'ThinkWater' website

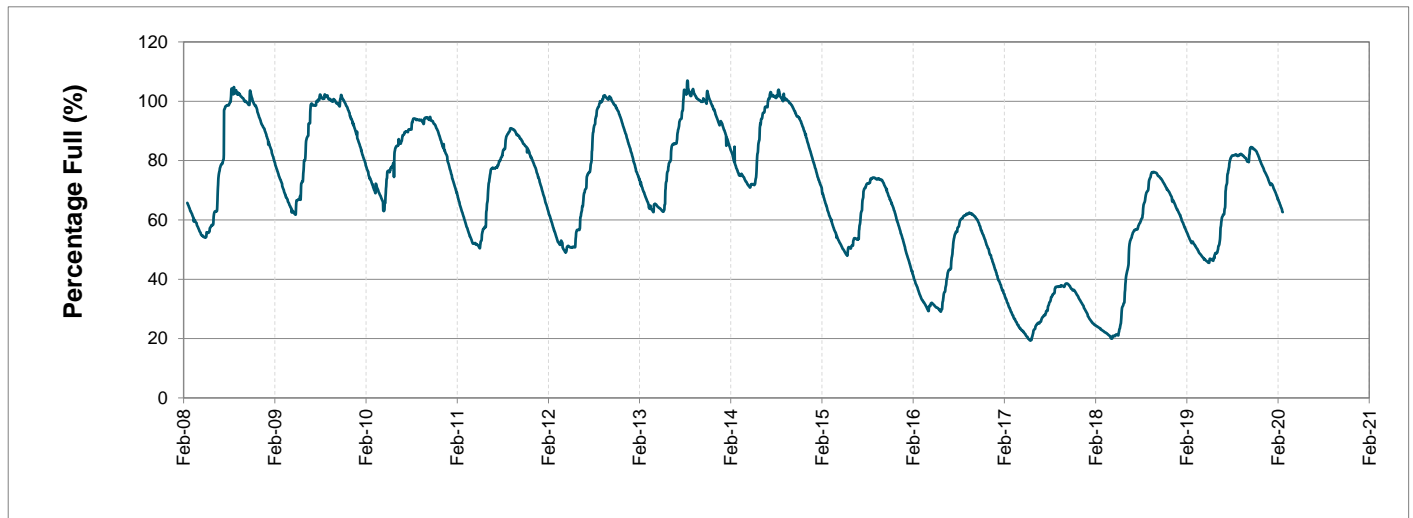
Water Stored in Major Dams (WCWSS)

Overall Percentage Full **62.6%**

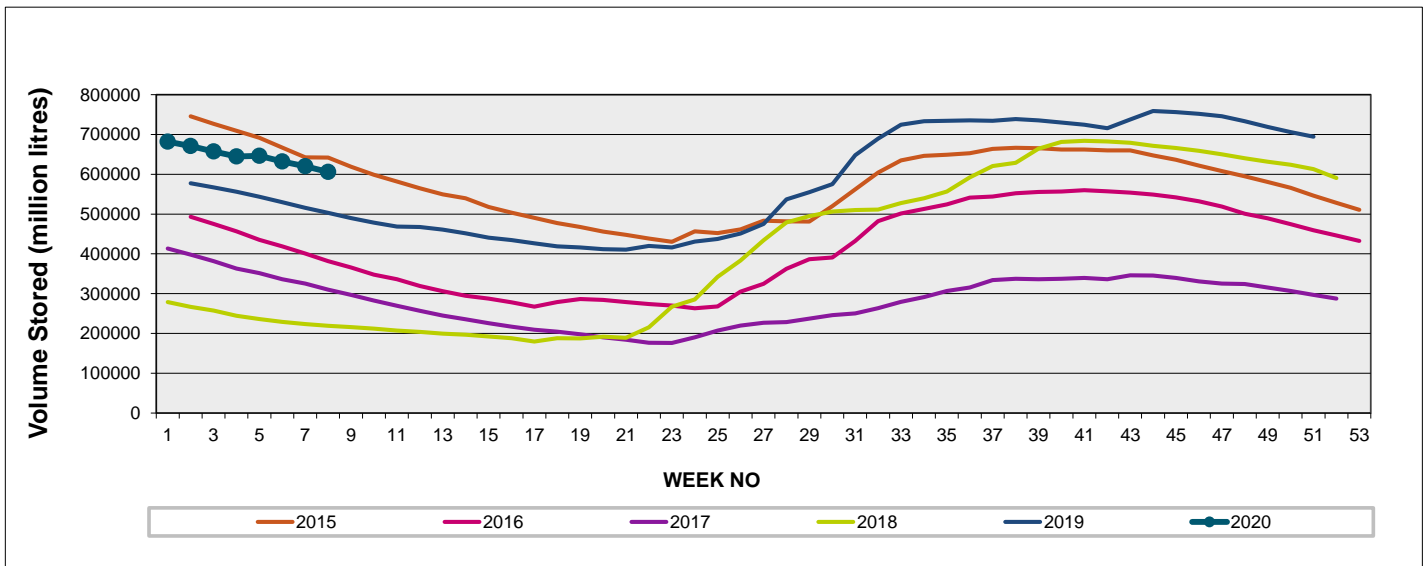
Weekly Change **-1.7%**

MAJOR DAMS (WCWSS)	STORAGE						
	CAPACITY	%	%	%	%	%	%
	MI	09 March 2020	Previous week	2019	2018	2017	2016
BERG RIVER	130 010	73.9	75.9	73.2	49.8	39.3	31.8
STEENBRAS LOWER	33 517	66.2	68.9	51.1	39.2	35.8	49.5
STEENBRAS UPPER	31 767	97.9	98.1	69.9	92.4	56.4	59.7
THEEWATERSKLOOF	480 188	57.7	59.3	40.6	11.0	25.8	39.3
VOËLVLEI	164 095	61.3	62.7	64.6	15.4	30.1	21.6
WEMMERSHOEK	58 644	61.0	63.0	60.0	43.9	36.1	51.6
TOTAL STORED	898 221	562 601	577 387	470 751	210 912	275 574	331 458
% STORAGE		62.6%	64.3%	52.4%	23.5%	30.7%	36.9%

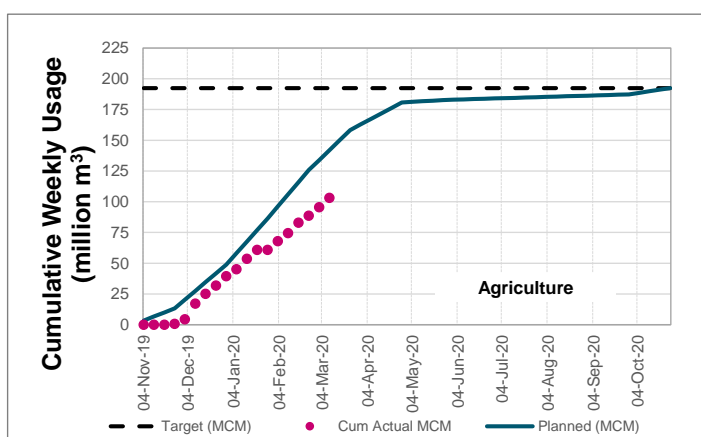
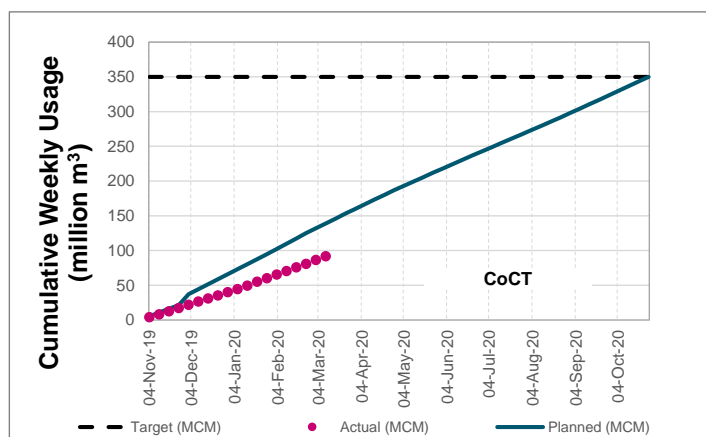
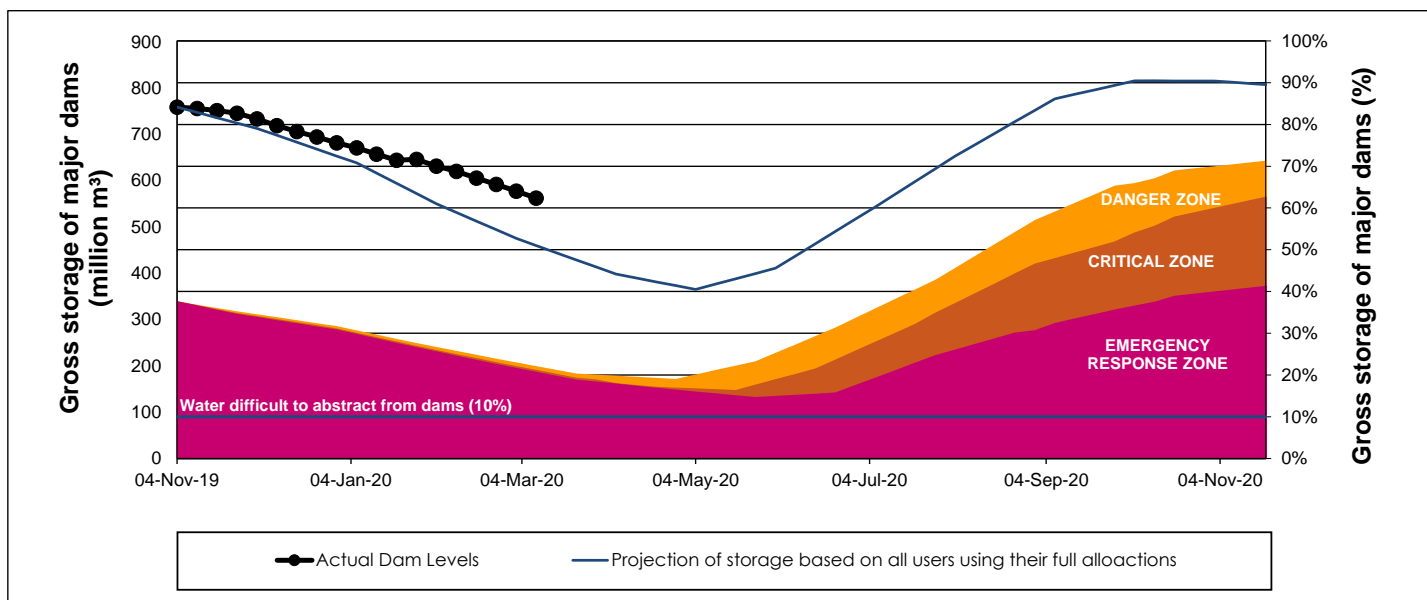
WCWSS Storage Record (2008 - Present)



WCWSS Comparative Storage Graph (5 Years)



WCWSS Dam Storage and Water Use Tracking



Water Stored in Minor Dams

Overall Percentage Full **48.5**

Weekly Change **-1.90**

MINOR DAMS	STORAGE						
	CAPACITY	%	%	%	%	%	%
	MI	09 March 2020	Previous week	2019	2018	2017	2016
ALEXANDRA (Table Mountain)	126	36.5	37.0	44.0	36.9	33.4	39.5
DE VILLIERS (Table Mountain)	243	95.7	96.1	44.5	65.8	50.7	68.2
HELY-HUTCHINSON (Table Moun)	925	0.0	0.0	26.2	95.0	94.4	79.3
KLEINPLAATS (Simon's Town)	1 368	43.3	45.3	51.5	41.2	45.7	38.3
LAND-EN-ZEEZICHT (Helderberg)	451	68.8	72.1	94.9	96.6	88.3	15.1
LEWIS GAY (Simon's Town)	182	0.7	2.2	0.0	77.5	46.5	9.5
VICTORIA (Table Mountain)	128	78.8	78.8	0.0	80.9	77.5	50.3
WOODHEAD (Table Mountain)	954	88.1	91.8	59.4	70.3	96.5	69.6
Total Stored	4 377	2123.2	2206.6	2105.2	3000.6	3166.3	2286.0
Percentages stored		48.5	50.4	48.1	68.6	72.3	52.2

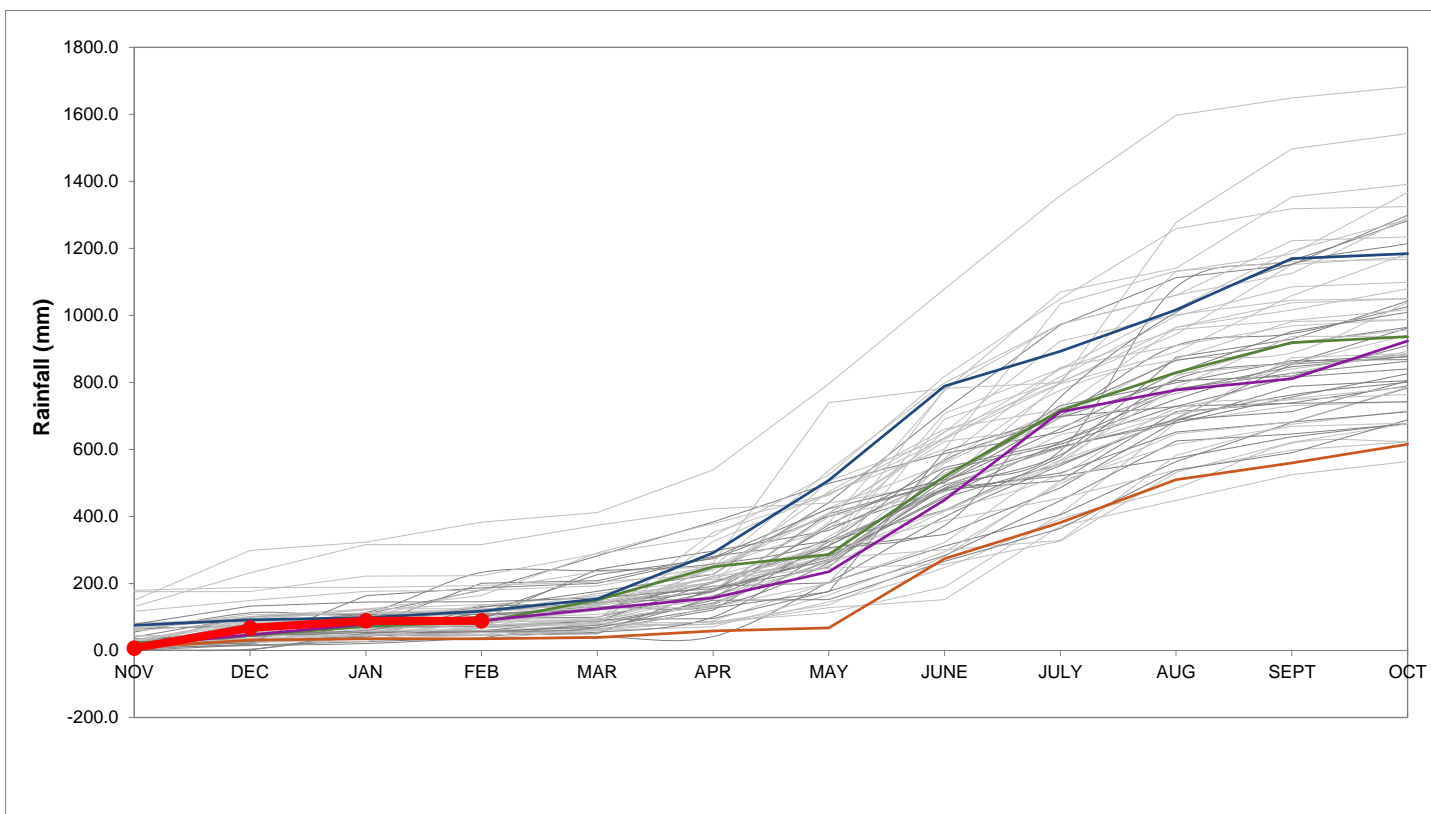
Rainfall Recorded

RAINFALL (mm)	02-Mar	03-Mar	04-Mar	05-Mar	06-Mar	07-Mar	08-Mar	Mar	
								Total*	LT Average
Blackheath Upper	0.0	0.0	0.0	0.0	0.0	0.0	0.0	0.0	19.2
Brooklands	0.0	0.0	0.0	0.0	0.0	0.0	2.0	2.0	35.6
Newlands	0.0	0.0	0.0	0.0	0.0	0.0	0.0	0.0	47.0
Steenbras	0.0	0.0	0.0	0.5	0.0	0.0	2.0	2.5	40.2
Table Mountain (Woodhead)	0.0	0.0	0.0	0.0	0.0	0.0	0.0	0.0	58.5
Theewaterskloof	0.0	0.0	0.0	0.0	0.0	0.0	9.2	9.2	25.3
Tygerberg	0.0	0.0	0.0	0.0	0.0	0.0	0.0	0.0	15.0
Voëlvei	0.0	0.0	0.0	0.0	0.0	0.0	0.0	0.0	12.1
Wemmershoek	0.0	0.0	0.0	0.0	0.0	0.0	0.0	0.0	29.9
Wynberg	0.0	0.0	0.0	0.0	0.0	0.0	0.0	0.0	26.3

Notes: *Total/cummulative rainfall for month indicated above
LT: Long Term

Accumulated Monthly Rainfall at Wemmershoek

Note: Wemmershoek station used due to long record and mountaneous location



Drinking Water Quality

SAMPLE PASS RATE

Month	Water Quality Compliance (%)	Target (%)
Nov-18	98.99	98
Dec-18	99.00	98
Jan-19	99.00	98
Feb-19	99.05	98
Mar-19	99.01	98
Apr-19	99.10	98
May-19	99.08	98
Jun-19	99.09	98
Jul-19	99.04	98
Aug-19	99.02	98
Sep-19	98.99	98
Oct-19	99.03	98
Nov-19	99.14	98
Dec-19	99.09	98
Jan-20	99.07	98

Notes:

This table shows CCT drinking water quality compliance according to the South African National Standard 241:2015. Compliance, measured against all prescribed chemical and microbiological components, consistently exceeds the very high CCT target of 98%. (Overall compliance percentages of continuous sampling and analysis are released on a monthly basis.)