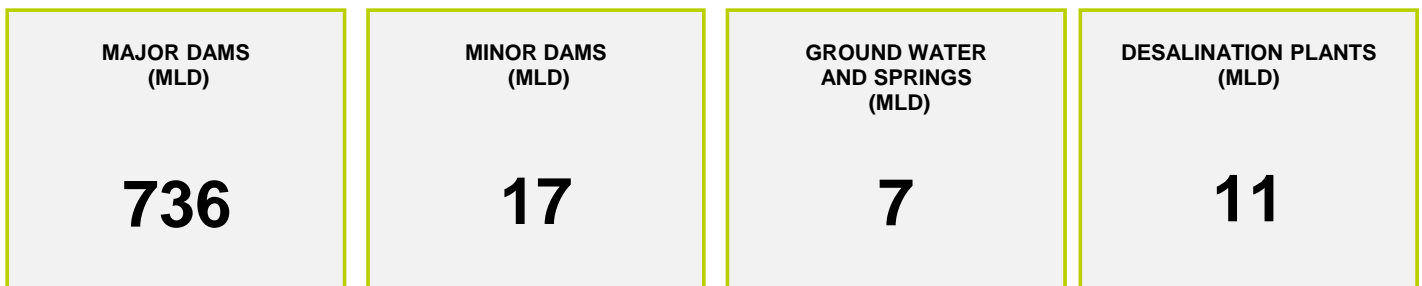




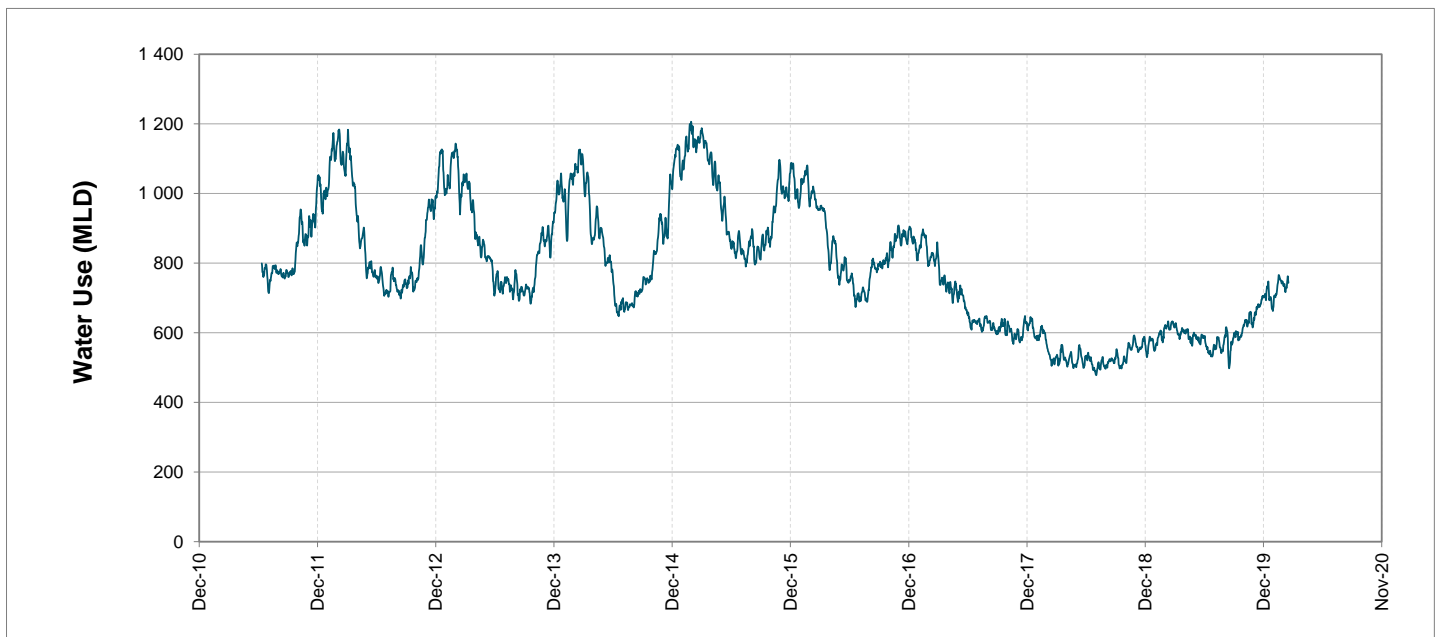
Headline Statistics



Water Production from Different Sources



Overall Water Usage Trend (2010 - Present)



WCWSS means Western Cape Water Supply System

MLD means million litres per day

More information on Water Saving and Restrictions is available on the City of Cape Town's 'ThinkWater' website

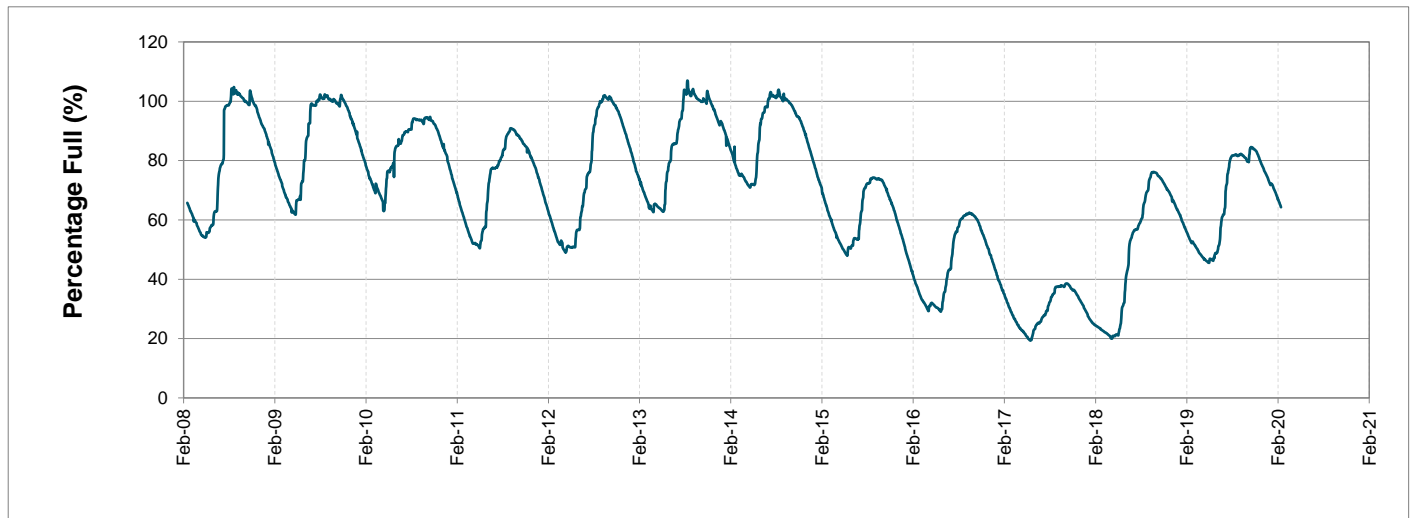
Water Stored in Major Dams (WCWSS)

Overall Percentage Full **64.3%**

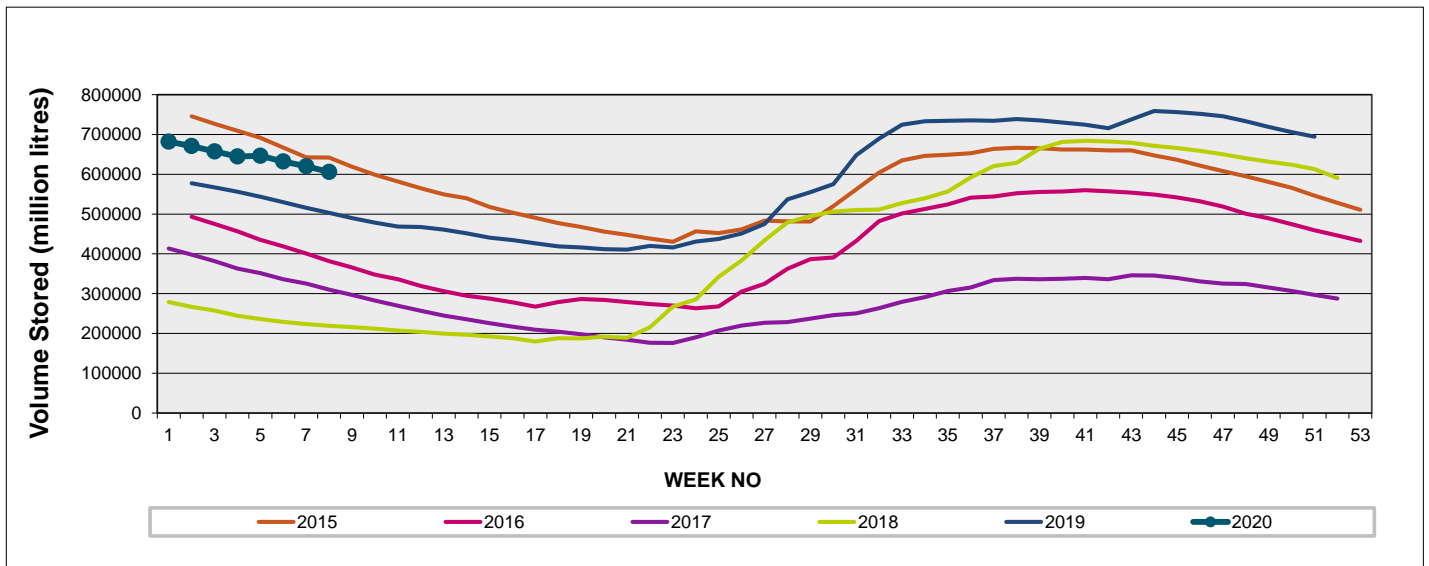
Weekly Change **-1.6%**

MAJOR DAMS (WCWSS)	STORAGE						
	CAPACITY	%	%	%	%	%	%
	MI	02 March 2020	Previous week	2019	2018	2017	2016
BERG RIVER	130 010	75.9	78.5	74.8	51.4	40.9	34.5
STEENBRAS LOWER	33 517	68.9	70.4	52.2	37.1	37.4	48.6
STEENBRAS UPPER	31 767	98.1	98.6	70.1	93.5	56.5	62.8
THEEWATERSKLOOF	480 188	59.3	60.4	41.5	11.0	27.4	40.9
VOËLVLEI	164 095	62.7	65.3	66.5	15.7	32.1	21.8
WEMMERSHOEK	58 644	63.0	65.3	61.9	45.0	36.1	52.4
TOTAL STORED	898 221	577 387	592 346	481 523	214 009	288 933	343 938
% STORAGE		64.3%	65.9%	53.6%	23.8%	32.2%	38.3%

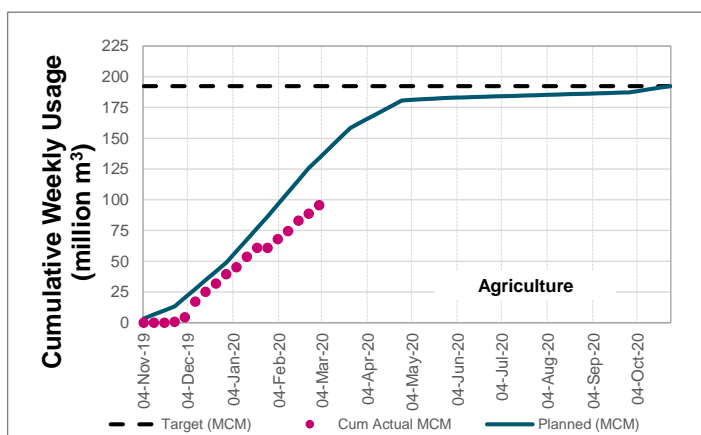
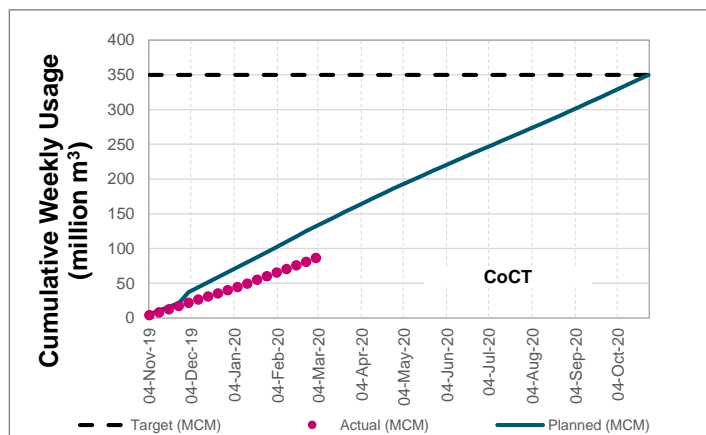
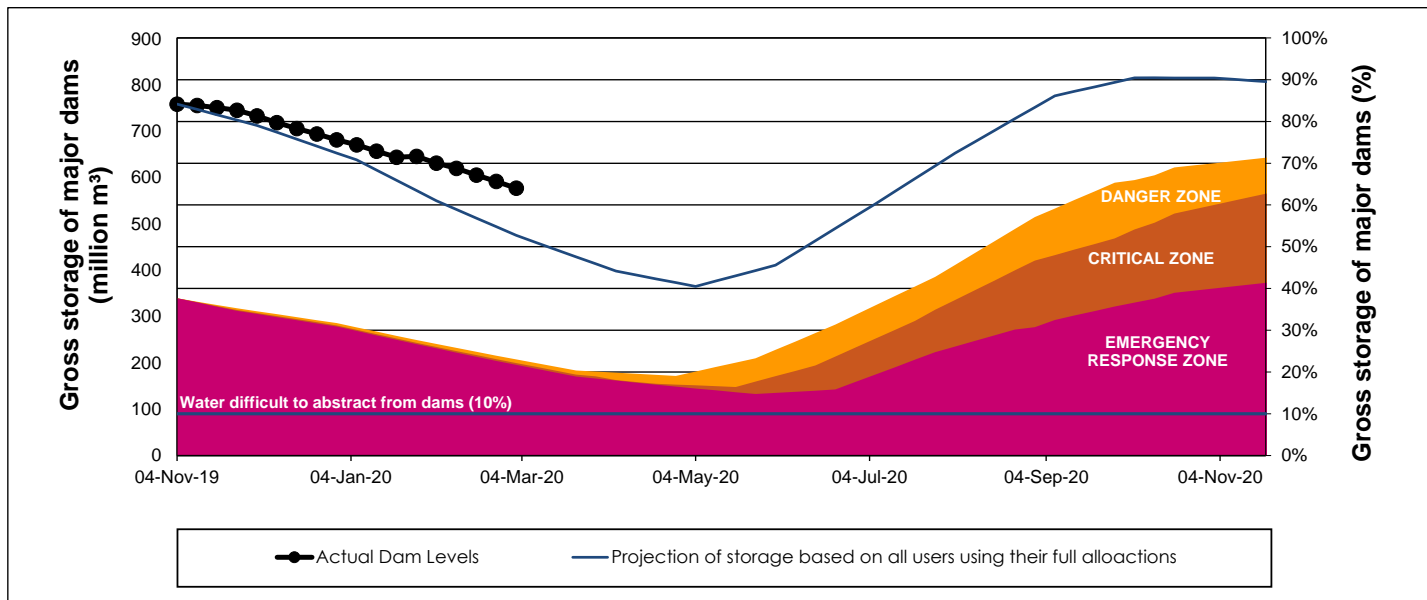
WCWSS Storage Record (2008 - Present)



WCWSS Comparative Storage Graph (5 Years)



WCWSS Dam Storage and Water Use Tracking



Water Stored in Minor Dams

Overall Percentage Full **50.4**

Weekly Change **-5.27**

MINOR DAMS	STORAGE						
	CAPACITY	%	%	%	%	%	%
	MI	02 March 2020	Previous week	2019	2018	2017	2016
ALEXANDRA (Table Mountain)	126	37.0	38.6	75.5	37.7	33.8	41.0
DE VILLIERS (Table Mountain)	243	96.1	96.5	37.3	73.2	51.8	68.8
HELY-HUTCHINSON (Table Moun)	925	0.0	12.5	41.9	96.1	95.0	81.0
KLEINPLAATS (Simon's Town)	1 368	45.3	48.1	54.4	42.5	46.7	36.9
LAND-EN-ZEEZICHT (Helderberg)	451	72.1	75.0	93.6	97.0	88.3	15.7
LEWIS GAY (Simon's Town)	182	2.2	2.1	0.0	86.4	48.1	14.2
VICTORIA (Table Mountain)	128	78.8	82.3	2.0	83.3	78.8	51.5
WOODHEAD (Table Mountain)	954	91.8	97.8	64.9	78.4	97.2	68.7
Total Stored	4 377	2206.6	2437.1	2361.6	3145.3	3200.8	2291.1
Percentages stored		50.4	55.7	54.0	71.9	73.1	52.3

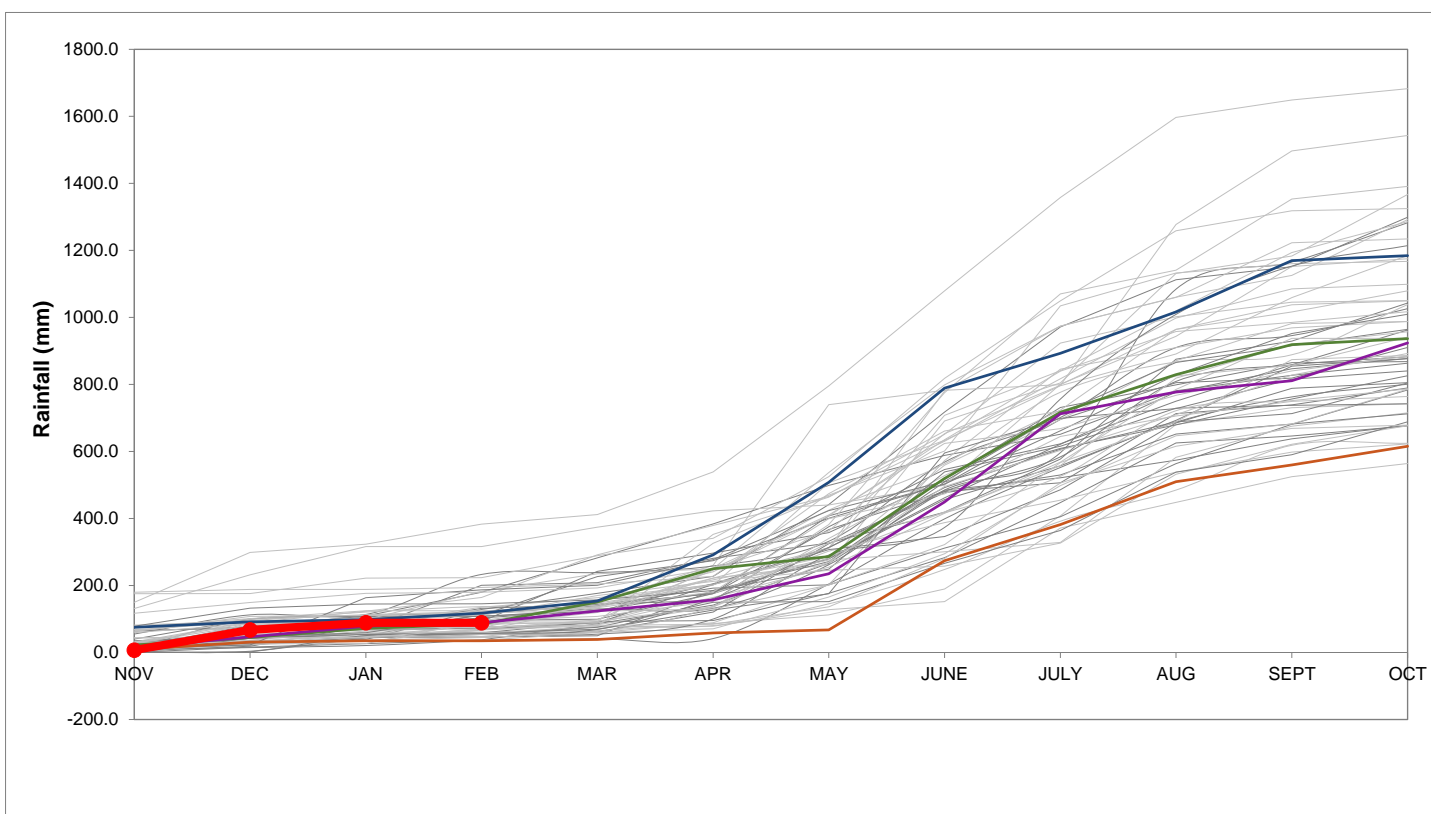
Rainfall Recorded

RAINFALL (mm)	24-Feb	25-Feb	26-Feb	27-Feb	28-Feb	29-Feb	01-Mar	Mar	
								Total*	LT Average
Blackheath Upper	0.0	0.0	0.0	0.0	0.0	0.0	0.0	0.0	19.2
Brooklands	0.0	0.0	0.0	0.0	0.0	0.0	0.0	0.0	35.6
Newlands	0.0	0.0	0.0	0.0	0.0	0.0	0.0	0.0	47.0
Steenbras	0.0	0.0	0.0	0.0	0.0	0.0	0.0	0.0	40.2
Table Mountain (Woodhead)	0.0	0.0	0.0	0.0	0.0	0.0	0.0	0.0	58.5
Theewaterskloof	0.0	0.0	0.0	8.7	0.0	0.0	0.0	0.0	25.3
Tygerberg	0.0	0.0	0.0	0.0	0.0	0.0	0.0	0.0	15.0
Voëlvei	0.0	0.0	0.0	0.0	0.0	0.0	0.0	0.0	12.1
Wemmershoek	0.0	0.0	0.0	0.0	0.0	0.0	0.0	0.0	29.9
Wynberg	0.0	0.0	0.0	0.0	0.0	0.0	0.0	0.0	26.3

Notes: *Total/cummulative rainfall for month indicated above
LT: Long Term

Accumulated Monthly Rainfall at Wemmershoek

Note: Wemmershoek station used due to long record and mountaneous location



Drinking Water Quality

SAMPLE PASS RATE

Month	Water Quality Compliance (%)	Target (%)
Nov-18	98.99	98
Dec-18	99.00	98
Jan-19	99.00	98
Feb-19	99.05	98
Mar-19	99.01	98
Apr-19	99.10	98
May-19	99.08	98
Jun-19	99.09	98
Jul-19	99.04	98
Aug-19	99.02	98
Sep-19	98.99	98
Oct-19	99.03	98
Nov-19	99.14	98
Dec-19	99.09	98
Jan-20	99.07	98

Notes:

This table shows CCT drinking water quality compliance according to the South African National Standard 241:2015. Compliance, measured against all prescribed chemical and microbiological components, consistently exceeds the very high CCT target of 98%. (Overall compliance percentages of continuous sampling and analysis are released on a monthly basis.)