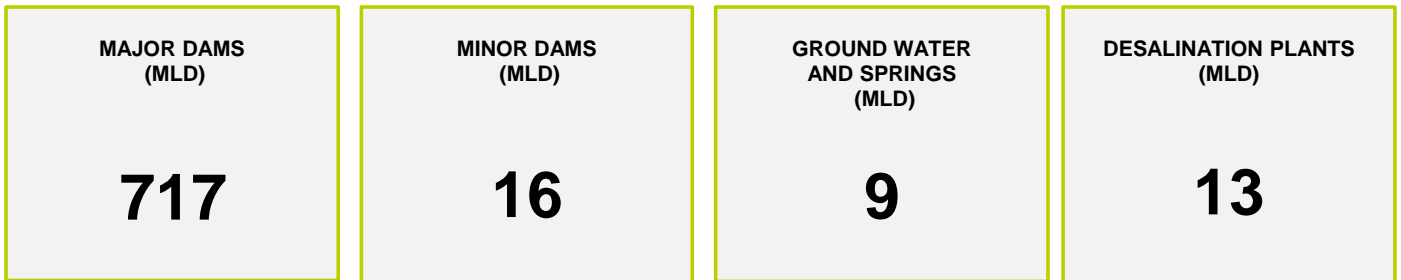




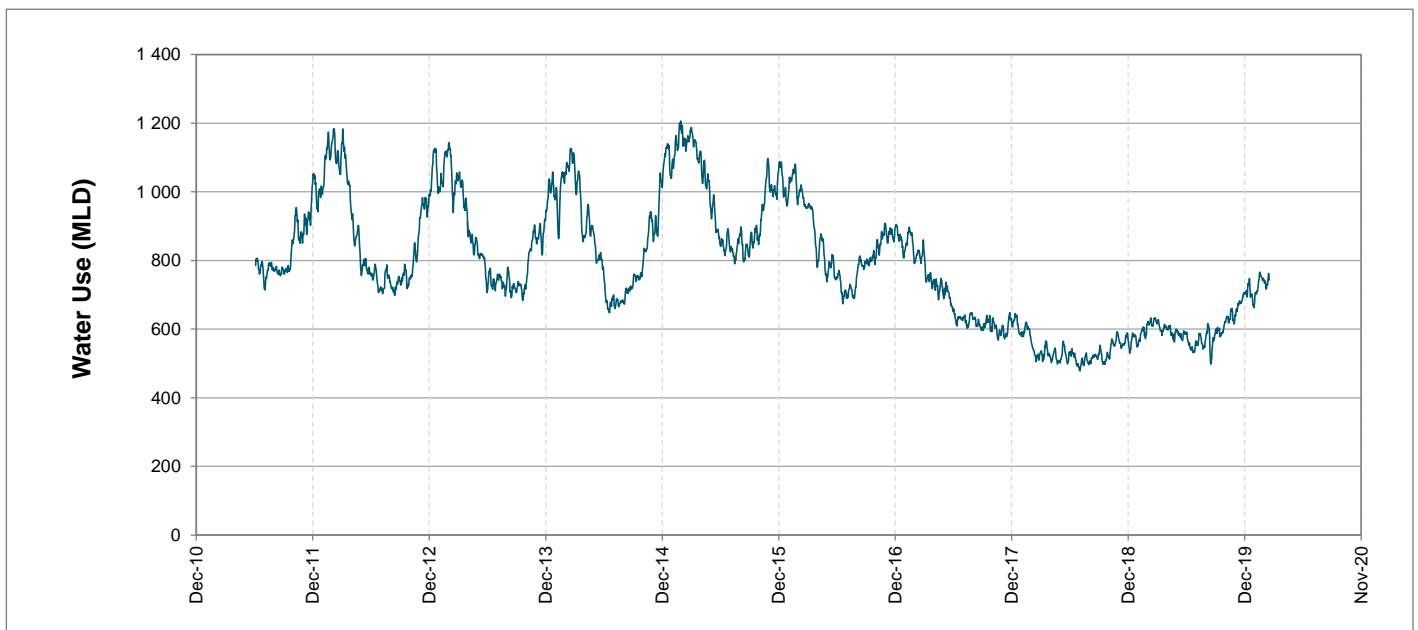
Headline Statistics



Water Production from Different Sources



Overall Water Usage Trend (2010 - Present)



WCWSS means Western Cape Water Supply System

MLD means million litres per day

More information on Water Saving and Restrictions is available on the City of Cape Town's 'ThinkWater' website

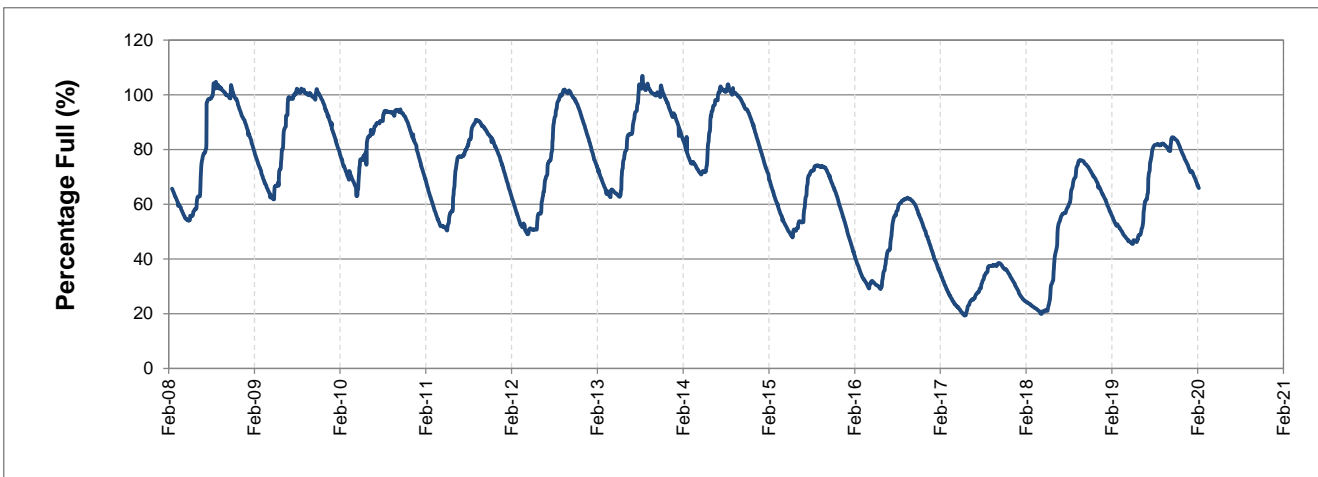
Water Stored in Major Dams (WCWSS)

Overall Percentage Full **65.9%**

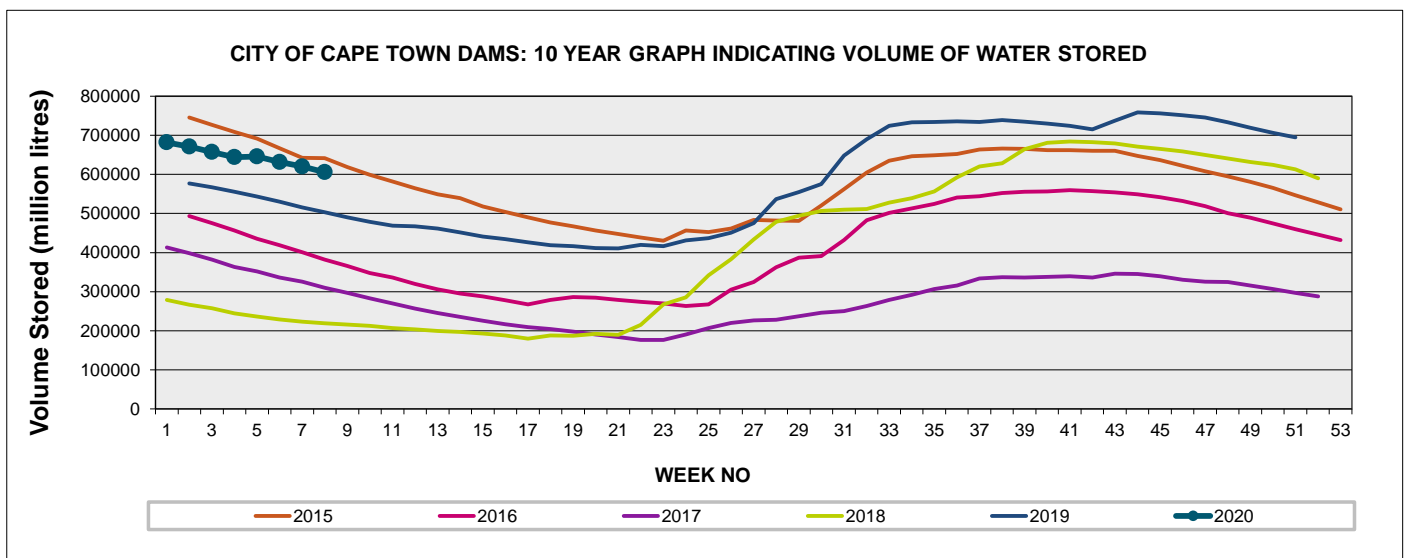
Weekly Change **-1.5%**

MAJOR DAMS (WCWSS)	STORAGE						
	CAPACITY	%	%	%	%	%	%
	MI	24 February 2020	Previous week	2019	2018	2017	2016
BERG RIVER	130 010	78.5	80.5	76.0	52.8	42.3	37.0
STEENBRAS LOWER	33 517	70.4	72.7	53.7	37.8	38.9	46.3
STEENBRAS UPPER	31 767	98.6	98.8	70.0	89.9	57.1	68.7
THEEWATERSKLOOF	480 188	60.4	61.5	42.5	11.0	28.6	42.6
VOËLVLEI	164 095	65.3	67.4	68.4	16.1	34.0	22.8
WEMMERSHOEK	58 644	65.3	67.4	63.5	46.6	36.3	53.1
TOTAL STORED	898 221	592 346	605 819	492 762	216 567	300 521	358 534
% STORAGE		65.9%	67.4%	54.9%	24.1%	33.5%	39.9%

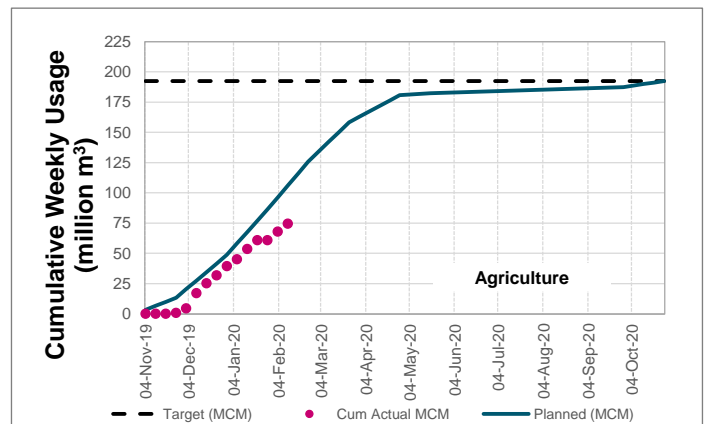
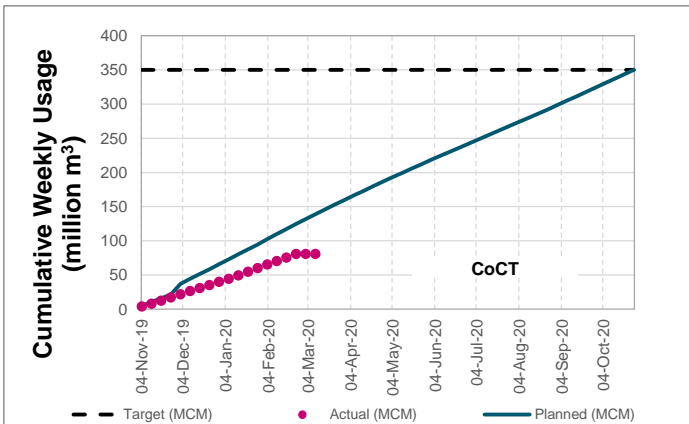
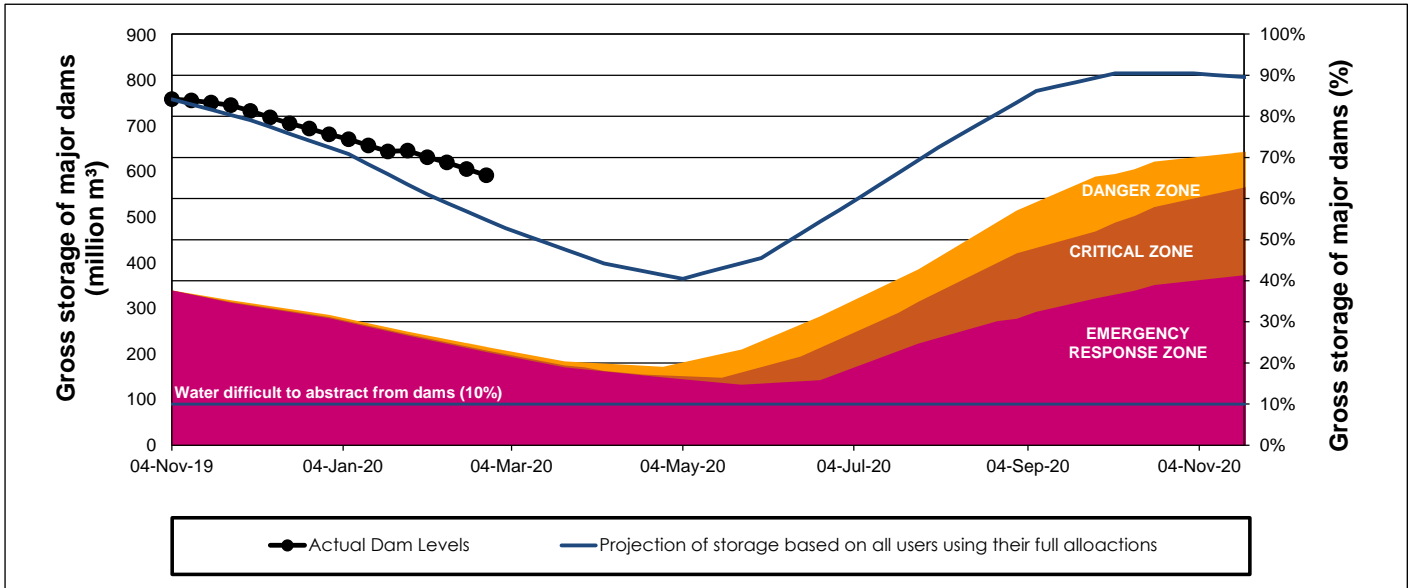
WCWSS Storage Record (2008 - Present)



WCWSS Comparative Storage Graph (5 Years)



WCWSS Dam Storage and Water Use Tracking



Water Stored in Minor Dams

Overall Percentage Full **55.7**

Weekly Change **-1.79**

MINOR DAMS	STORAGE						
	CAPACITY	%	%	%	%	%	%
	MI	24 February 2020	Previous week	2019	2018	2017	2016
ALEXANDRA (Table Mountain)	126	38.6	39.6	52.7	38.7	34.2	43.1
DE VILLIERS (Table Mountain)	243	96.5	97.3	37.9	76.5	53.0	69.6
HELY-HUTCHINSON (Table Mountain)	925	12.5	18.4	62.3	96.2	95.9	83.1
KLEINPLAATS (Simon's Town)	1 368	48.1	50.7	57.3	43.3	47.6	43.1
LAND-EN-ZEEZICHT (Helderberg)	451	75.0	74.6	95.6	98.6	89.0	16.5
LEWIS GAY (Simon's Town)	182	2.1	4.7	0.0	89.7	53.9	17.9
VICTORIA (Table Mountain)	128	82.3	82.9	32.6	83.6	81.2	52.5
WOODHEAD (Table Mountain)	954	97.8	95.8	55.5	86.4	97.8	67.3
Total Stored	4 377	2437.1	2515.6	2520.9	3256.5	3246.5	2398.9
Percentage stored		55.7	57.5	57.6	74.4	74.2	54.8

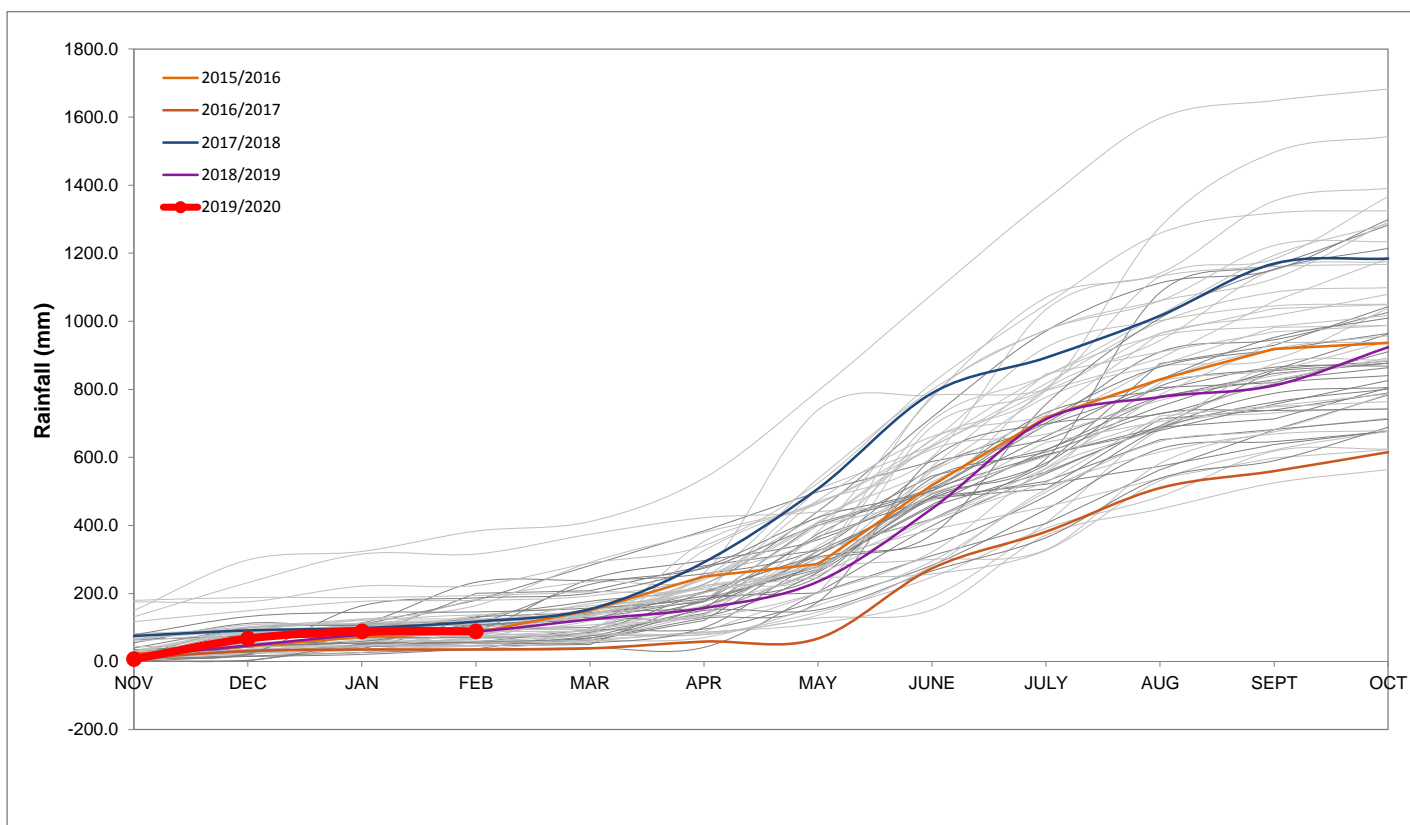
Rainfall Recorded

RAINFALL (mm)	17-Feb	18-Feb	19-Feb	20-Feb	21-Feb	22-Feb	23-Feb	Feb	
								Total*	LT Average
Blackheath Upper	0.0	0.0	0.0	0.0	0.0	2.5	0.0	2.5	15.5
Brooklands	0.0	0.0	0.0	0.0	0.0	3.0	0.0	6.0	20.9
Newlands	0.0	0.0	0.0	0.0	0.0	0.0	0.0	10.5	30.2
Steenbras	0.0	0.0	0.0	0.0	0.6	2.7	0.0	13.7	26.8
Table Mountain (Woodhead)	0.0	0.0	0.0	0.0	0.0	0.0	0.0	0.0	41.7
Theewaterskloof	3.5	0.0	0.0	0.0	0.0	1.0	0.0	11.9	22.9
Tygerberg	0.0	0.0	0.0	0.0	0.0	0.0	0.0	3.5	7.5
Voëlvlei	0.0	0.0	0.0	0.0	0.0	0.0	0.0	0.0	10.1
Wemmershoek	0.0	0.0	0.0	0.0	0.0	0.0	0.0	0.0	16.3
Wynberg	0.0	0.0	0.0	0.0	0.0	0.0	0.0	0.0	12.6

Notes: *Total/cumulative rainfall for month indicated above
LT: Long Term

Accumulated Monthly Rainfall at Wemmershoek

Note: Wemmershoek station used due to long record and mountaneous location



Drinking Water Quality

SAMPLE PASS RATE

Month	Water Quality Compliance (%)	Target (%)
Nov-18	98.99	98
Dec-18	99.00	98
Jan-19	99.00	98
Feb-19	99.05	98
Mar-19	99.01	98
Apr-19	99.10	98
May-19	99.08	98
Jun-19	99.09	98
Jul-19	99.04	98
Aug-19	99.02	98
Sep-19	98.99	98
Oct-19	99.03	98
Nov-19	99.14	98
Dec-19	99.09	98
Jan-20	99.07	98

Notes:

This table shows CCT drinking water quality compliance according to the South African National Standard 241:2015. Compliance, measured against all prescribed chemical and microbiological components, consistently exceeds the very high CCT target of 98%. (Overall compliance percentages of continuous sampling and analysis are released on a monthly basis..)