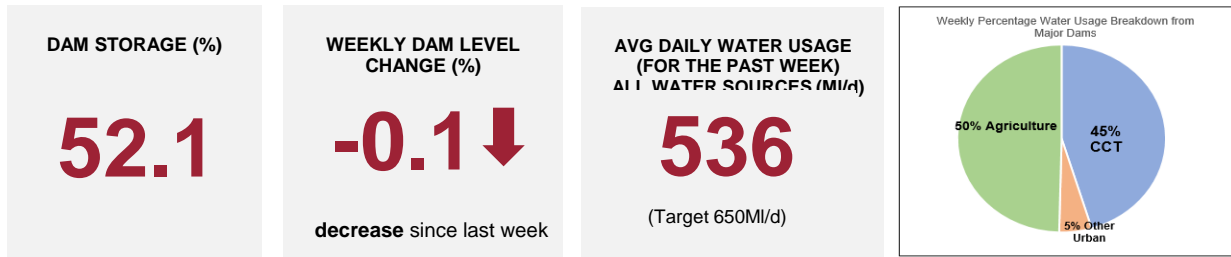




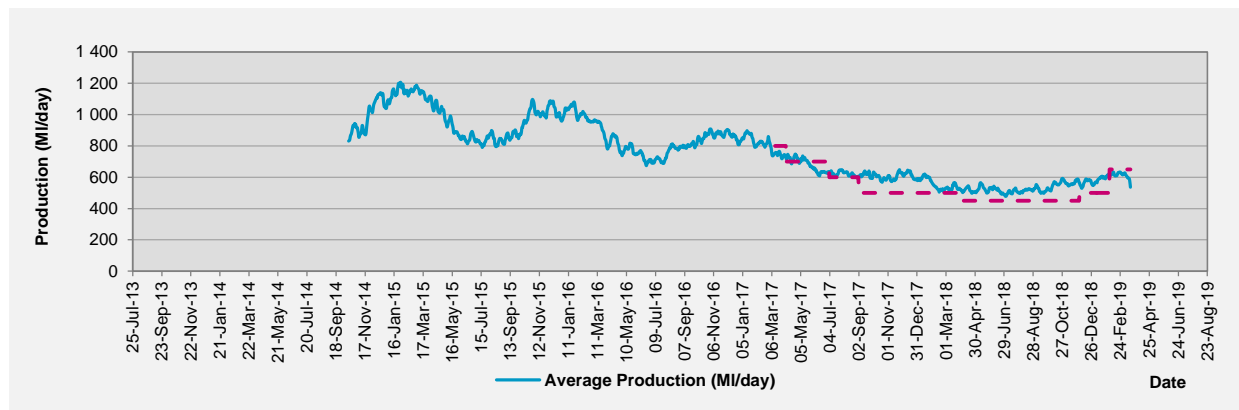
City of Cape Town: Dam Levels Report

18 March 2019



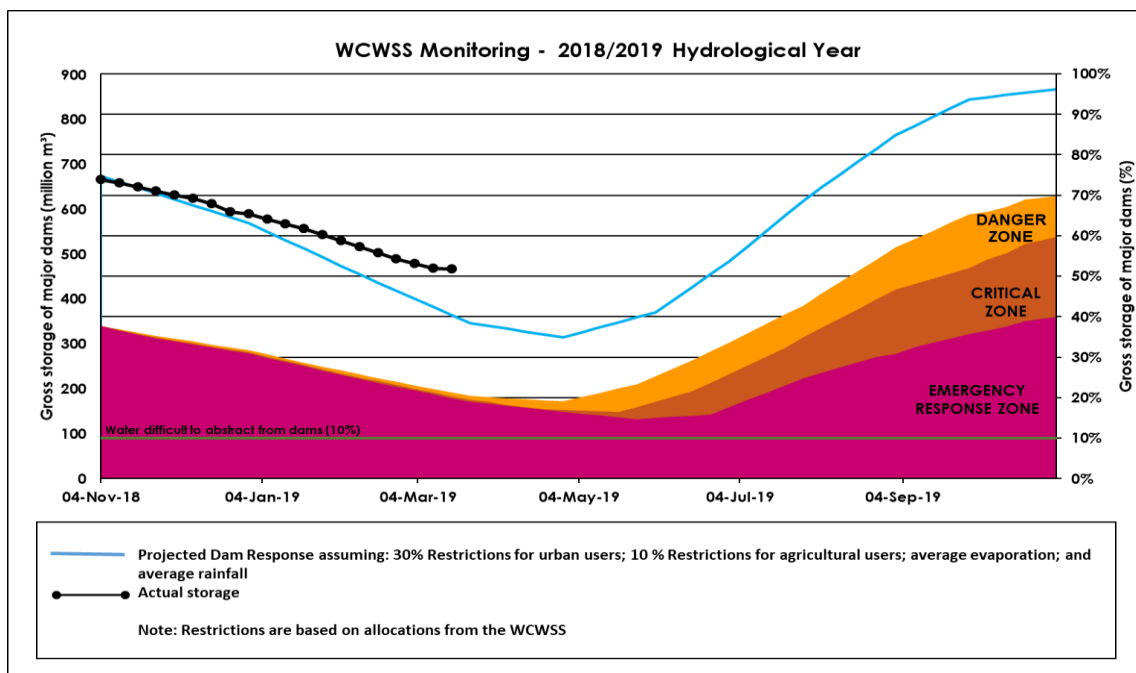
Disclaimer: The data depicted above is indicative and has been based on the City's own assessment of water use from the WCSS. It is subject to official verification by the National Department of Water and Sanitation.

Water Usage from large dams comprising the Western Cape Water Supply System



Western Cape Water Supply System (WCSS) weekly drought monitoring

This graph depicts total dam storage against potential system risk scenarios.

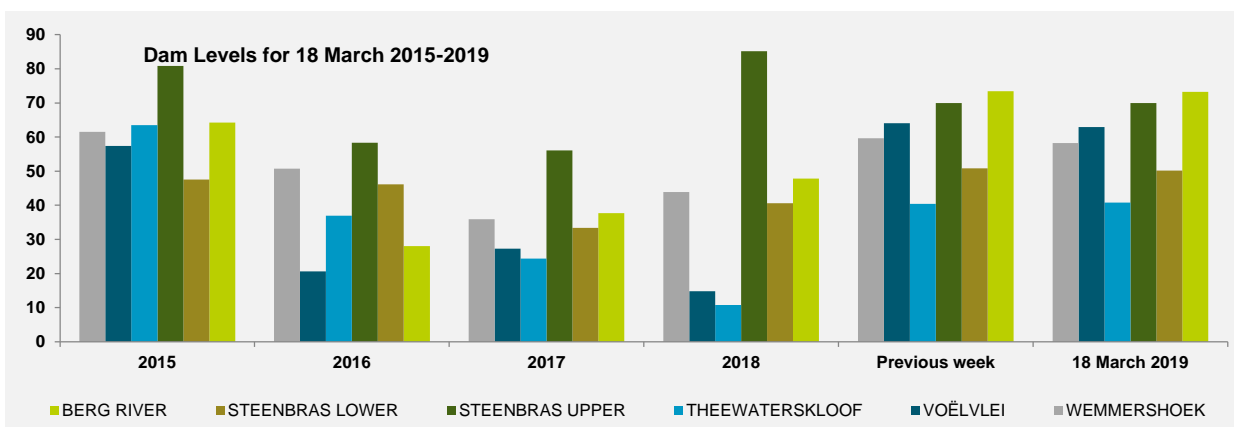


Water stored in major dams comprising Western Cape Water Supply System (WCWSS)

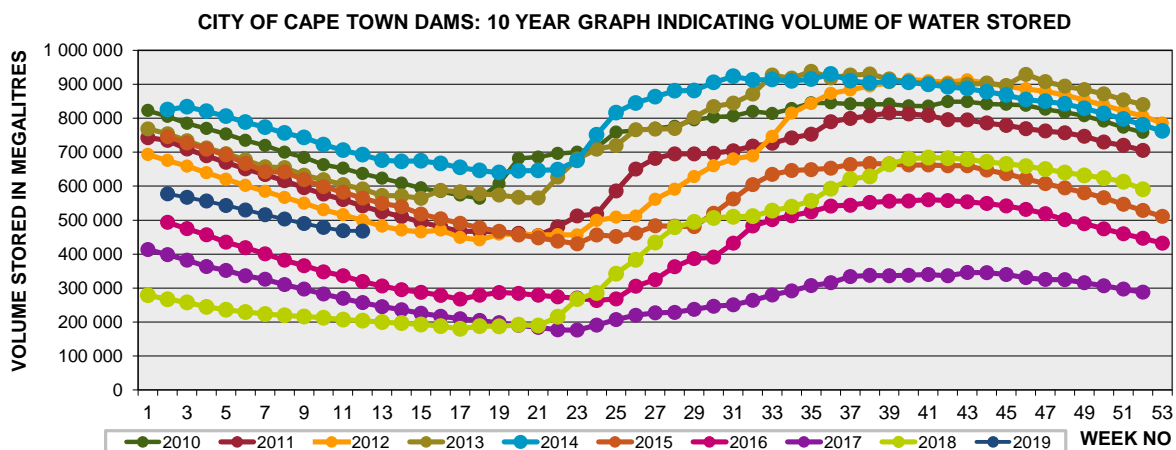
MAJOR DAMS	STORAGE						
	CAPACITY	%		%		%	
	MI	18 March 2019	Previous week	2018	2017	2016	2015
BERG RIVER	130 010	73.3	73.4	47.8	37.7	28.0	64.3
STEENBRAS LOWER	33 517	50.2	50.8	40.6	33.4	46.1	47.6
STEENBRAS UPPER	31 767	70.0	70.0	85.1	56.1	58.4	80.8
THEEWATERSKLOOF	480 188	40.8	40.4	10.7	24.3	36.9	63.5
VOËLVLEI	164 095	62.9	64.1	14.8	27.3	20.7	57.4
WEMMERSHOEK	58 644	58.2	59.7	43.8	35.9	50.8	61.5
TOTAL STORED	898 221	467 603	468 782	204 295	260 650	311 476	560 502
% STORAGE		52.1	52.2	22.7	29.0	34.7	62.4

NOTES:

- Capacity of the major dams of the Western Cape Water Supply System is 99.6% and that of the minor dams 0.4% of the combined capacity of the major and minor dams. Kindly note that all the Major Dams show gross capacity.
- All figures are for 18 March for each year except for those in the second column, which gives the figures for the previous week of this year.
- The last 10% of a dam's water is difficult to use, the useable water in the dam is approximately 10% less than the dam level.



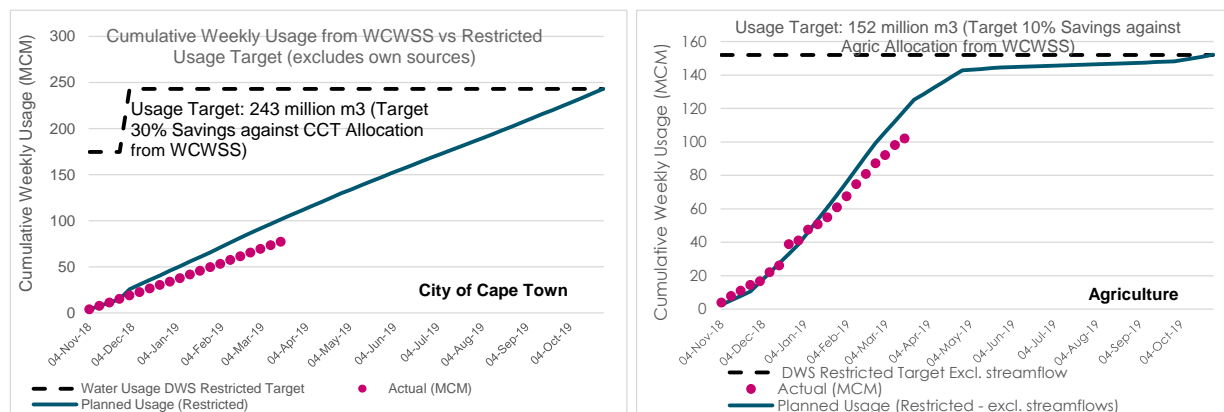
Ten year graph Indicating volume of water stored in major dams Comprising Western Cape Water Supply System (WCWSS)



Water stored in minor dams within Cape Town

MINOR DAMS	STORAGE						
	CAPACITY	%		%		%	
	MI	18 March 2019	Previous week	2018	2017	2016	2015
ALEXANDRA (Table Mountain)	126	17.2	38.2	34.1	9.3	34.6	34.2
DE VILLIERS (Table Mountain)	243	54.4	47.2	56.0	49.7	66.6	44.3
HELY-HUTCHINSON (Table Mountain)	925	35.6	26.2	95.1	94.4	75.8	0.0
KLEINPLAATS (Simon's Town)	1 368	50.9	53.5	42.4	47.3	38.2	29.2
LAND-EN-ZEEZICHT (Helderberg)	451	92.7	90.7	89.2	82.7	13.3	0.0
LEWIS GAY (Simon's Town)	182	0.0	0.0	65.2	40.4	7.0	74.7
VICTORIA (Table Mountain)	128	5.5	0.0	79.6	76.6	47.5	0.0
WOODHEAD (Table Mountain)	954	53.9	47.3	61.2	96.4	71.4	50.7

Water usage from large dams comprising the Western Cape Water Supply System



CCT AVG DAILY PRODUCTION WCWSS LARGE DAMS ONLY (M/d)

519

The above graph tracks City of Cape Town (CCT) water usage against the Department of Water and Sanitation (DWS) restriction requirement against our unrestricted demand (or past usage). Restriction targets have changed as of 1 December 2018. CCT has been restricted at 30% against the WCWSS approved allocation to the CCT.

Water Quality Sample Pass Rate

Month	Water Quality Compliance (%)	Target (%)
Dec-17	99.44	98
Jan-18	99.43	98
Feb-18	99.38	98
Mar-18	99.38	98
Apr-18	99.26	98
May-18	99.20	98
Jun-18	99.07	98
Jul-18	99.12	98
Aug-18	99.07	98
Sep-18	99.08	98
Oct-18	99.05	98
Nov-18	98.99	98
Dec-18	99.00	98

Notes:

This table shows CCT drinking water quality compliance according to the South African National Standard 241:2015. Compliance, measured against all prescribed chemical and microbiological components, consistently exceeds the very high CCT target of 98%. (Overall compliance percentages of continuous sampling and analysis are released on a monthly basis. The latest available is for December).

Rainfall

RAINFALL (mm)	11-Mar	12-Mar	13-Mar	14-Mar	15-Mar	16-Mar	17-Mar	Mar	
								Total*	LT Average
Blackheath Upper	6.0	0.0	0.0	0.0	0.0	0.0	0.0	24.6	14.1
Brooklands	12.0	0.5	0.0	0.0	0.0	0.0	0.0	61.0	22.5
Newlands	37.0	0.0	0.0	0.0	0.0	0.0	0.0	47.0	34.1
Steenbras	2.0	0.2	0.0	0.0	0.0	1.5	0.0	18.3	24.3
Table Mountain (Woodhead)	23.5	0.0	0.0	0.0	0.0	0.0	0.0	96.7	49.5
Theewaterskloof	7.2	0.0	0.0	0.0	0.0	0.0	0.0	79.7	22.0
Tygerberg	12.8	0.0	0.0	0.0	0.0	0.0	0.0	28.6	12.7
Voëlvllei	18.5	0.0	0.0	0.0	0.0	0.0	0.0	37.5	14.4
Wemmershoek	9.0	0.0	0.0	0.0	0.0	0.0	0.0	35.2	14.0
Wynberg	26.5	0.0	0.0	0.0	0.0	0.0	0.0	45.9	22.4

Notes: *Total/cumulative rainfall for month indicated above
LT: Long Term