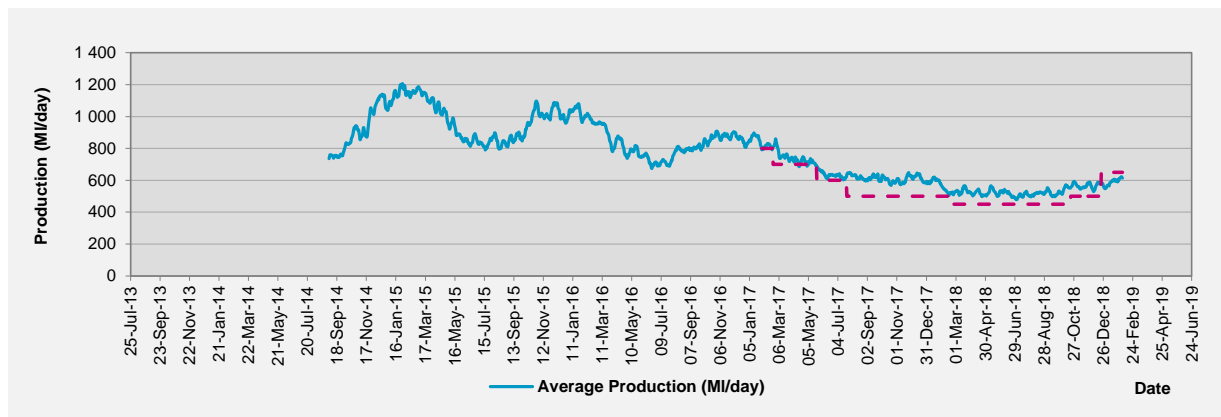


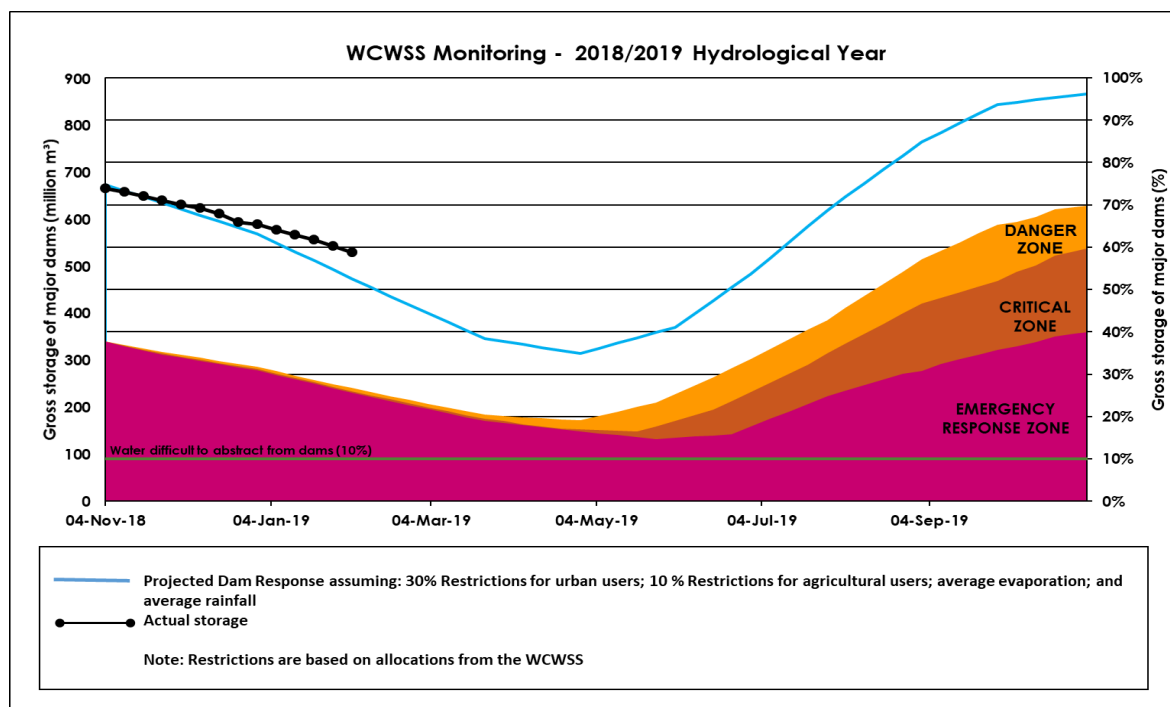
**Disclaimer:** The data depicted above is indicative and has been based on the City's own assessment of water use from the WCWSS. It is subject to official verification by the National Department of Water and Sanitation.

## Water Usage from large dams comprising the Western Cape Water Supply System



## Western Cape Water Supply System (WCWSS) weekly drought monitoring

This graph depicts total dam storage against potential system risk scenarios.



## Water stored in major dams comprising Western Cape Water Supply System (WCWSS)

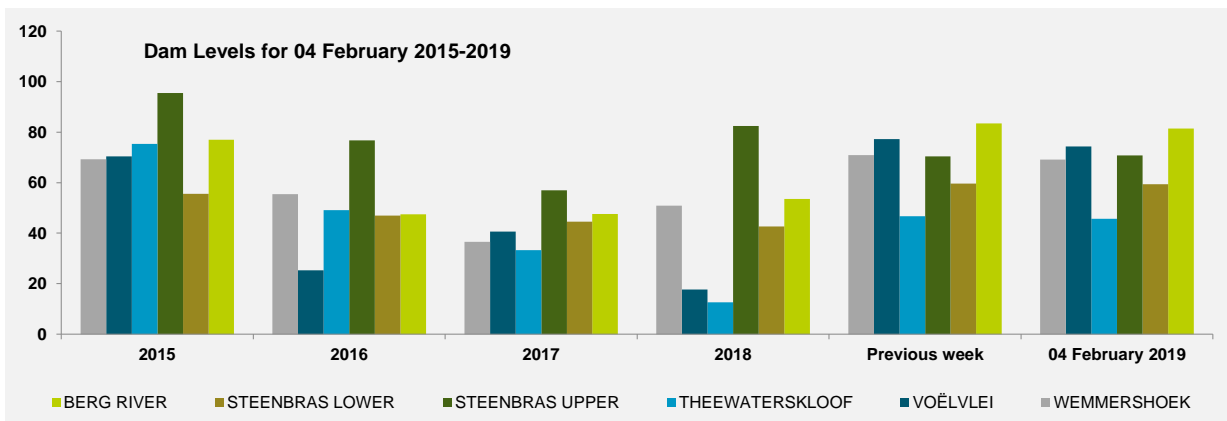
MAJOR DAMS	STORAGE						
	CAPACITY	%	%	%	%	%	%
	MI	04 February 2019	Previous week	2018	2017	2016	2015
BERG RIVER	130 010	81.5	83.5	53.5	47.6	47.4	77.0
STEENBRAS LOWER	33 517	59.4	59.6	42.6	44.6	47.0	55.5
STEENBRAS UPPER	31 767	70.8	70.4	82.5	57.0	76.7	95.5
THEEWATERSKLOOF	480 188	45.6	46.7	12.6	33.2	49.1	75.4
VOËLVLEI	164 095	74.3	77.2	17.6	40.6	25.3	70.3
WEMMERSHOEK	58 644	69.1	70.9	50.9	36.5	55.4	69.3
<b>TOTAL STORED</b>	<b>898 221</b>	<b>529 967</b>	<b>543 275</b>	<b>229 550</b>	<b>342 539</b>	<b>411 701</b>	<b>667 015</b>
<b>% STORAGE</b>		<b>59.0</b>	<b>60.5</b>	<b>25.6</b>	<b>38.1</b>	<b>45.8</b>	<b>74.3</b>

### NOTES:

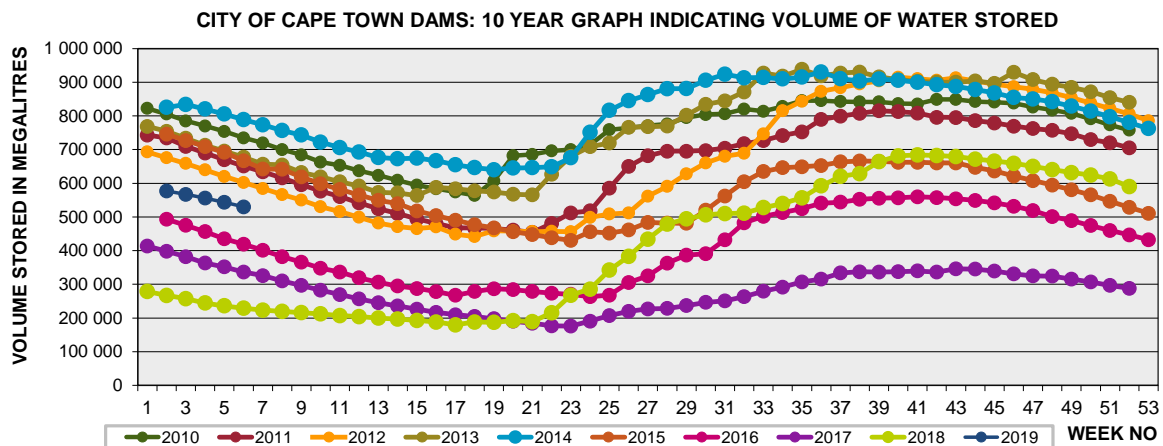
1) Capacity of the major dams of the Western Cape Water Supply System is 99.6% and that of the minor dams 0.4% of the combined capacity of the major and minor dams. Kindly note that all the Major Dams show gross capacity.

2) All figures are for 04 February for each year except for those in the second column, which gives the figures for the previous week of this year.

3) The last 10% of a dam's water is difficult to use, the useable water in the dam is approximately 10% less than the dam level.



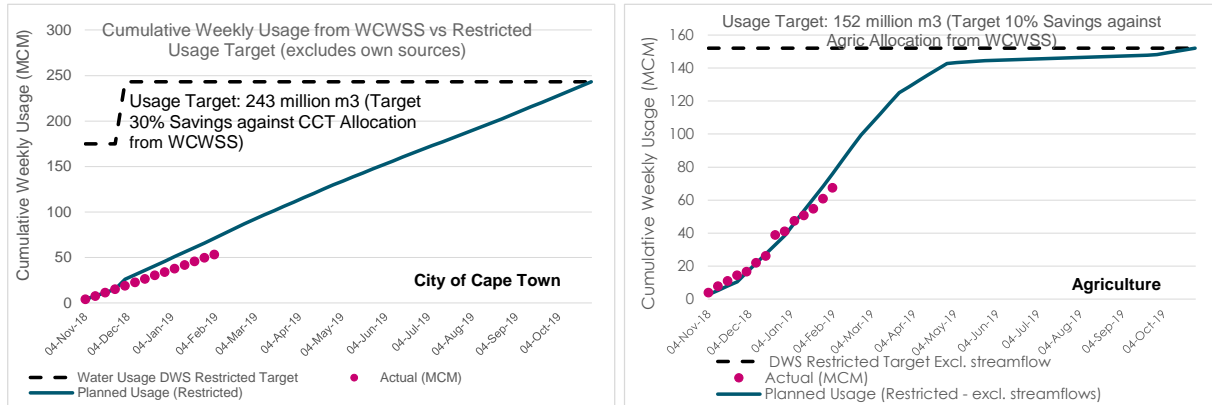
## Ten year graph Indicating volume of water stored in major dams Comprising Western Cape Water Supply System (WCWSS)



## Water stored in minor dams within Cape Town

MINOR DAMS	STORAGE						
	CAPACITY	%	%	%	%	%	%
	MI	04 February 2019	Previous week	2018	2017	2016	2015
ALEXANDRA (Table Mountain)	126	24.4	40.5	39.4	32.5	46.7	35.3
DE VILLIERS (Table Mountain)	243	47.4	36.6	78.6	62.5	71.5	56.1
HELTY-HUTCHINSON (Table Mountain)	925	97.5	98.0	97.6	96.4	89.5	28.2
KLEINPLAATS (Simon's Town)	1 368	70.2	71.5	48.1	54.2	48.7	33.6
LAND-EN-ZEEZICHT (Helderberg)	451	91.3	91.9	96.3	85.8	21.0	0.0
LEWIS GAY (Simon's Town)	182	14.1	21.7	93.0	59.1	36.4	76.8
VICTORIA (Table Mountain)	128	78.6	82.7	87.1	85.4	55.4	80.6
WOODHEAD (Table Mountain)	954	56.8	68.4	94.0	98.6	62.7	71.1

## Water usage from large dams comprising the Western Cape Water Supply System



CCT AVG DAILY PRODUCTION WCWSS LARGE DAMS ONLY (M/d)

**571**

The above graph tracks City of Cape Town (CCT) water usage against the Department of Water and Sanitation (DWS) restriction requirement against our unrestricted demand (or past usage). Restriction targets have changed as of 1 December 2018. CCT has been restricted at 30% against the WCWSS approved allocation to the CCT.

## Water Quality Sample Pass Rate

Month	Water Quality Compliance (%)	Target (%)
Nov-17	99.49	98
Dec-17	99.44	98
Jan-18	99.43	98
Feb-18	99.38	98
Mar-18	99.38	98
Apr-18	99.26	98
May-18	99.20	98
Jun-17	99.07	98
Jul-18	99.12	98
Aug-18	99.07	98
Sep-18	99.08	98
Oct-18	99.05	98
Nov-18	98.99	98

### Notes:

This table shows CCT drinking water quality compliance according to the South African National Standard 241:2015. Compliance, measured against all prescribed chemical and microbiological components, consistently exceeds the very high CCT target of 98%. (Overall compliance percentages of continuous sampling and analysis are released on a monthly basis. The latest available is for November).

## Rainfall

RAINFALL (mm)	28-Jan	29-Jan	30-Jan	31-Jan	01-Feb	02-Feb	03-Feb	Jan	
								Total*	LT Average
Blackheath Upper	0.0	0.0	0.0	0.0	0.0	0.0	2.8	4.5	14.1
Brooklands	0.0	0.0	0.0	0.0	0.0	4.0	13.0	18.0	22.5
Newlands	0.0	0.0	0.0	0.0	0.0	0.0	0.0	28.0	34.1
Steenbras	0.0	0.0	0.0	0.0	0.0	30.0	4.5	13.8	24.3
Table Mountain (Woodhead)	0.0	0.0	0.0	0.0	0.0	10.0		43.0	49.5
Theewaterskloof	0.0	0.0	0.0	1.0	0.0	0.0	0.0	7.9	22.0
Tygerberg	0.0	0.0	0.0	0.0	0.0	0.0	1.2	7.4	12.7
Voëlvlei	0.0	0.0	0.0	0.0	1.0	1.4	1.0	1.0	14.4
Wemmershoek	0.0	0.0	0.0	0.0	0.0	1.5	1.5	31.4	14.0
Wynberg	0.0	0.0	0.0	0.0	0.0	0.0	0.0	22.0	22.4

Notes: \*Total/cumulative rainfall for month indicated above  
LT: Long Term