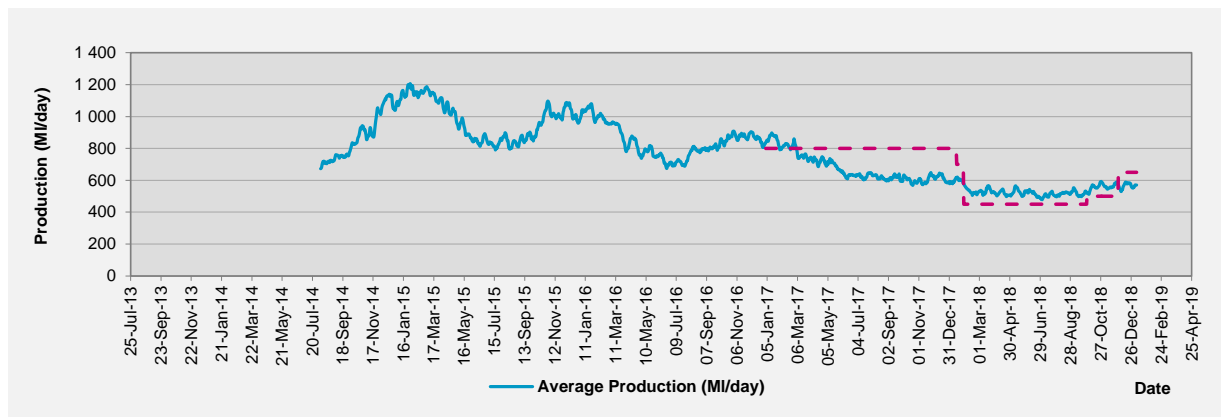


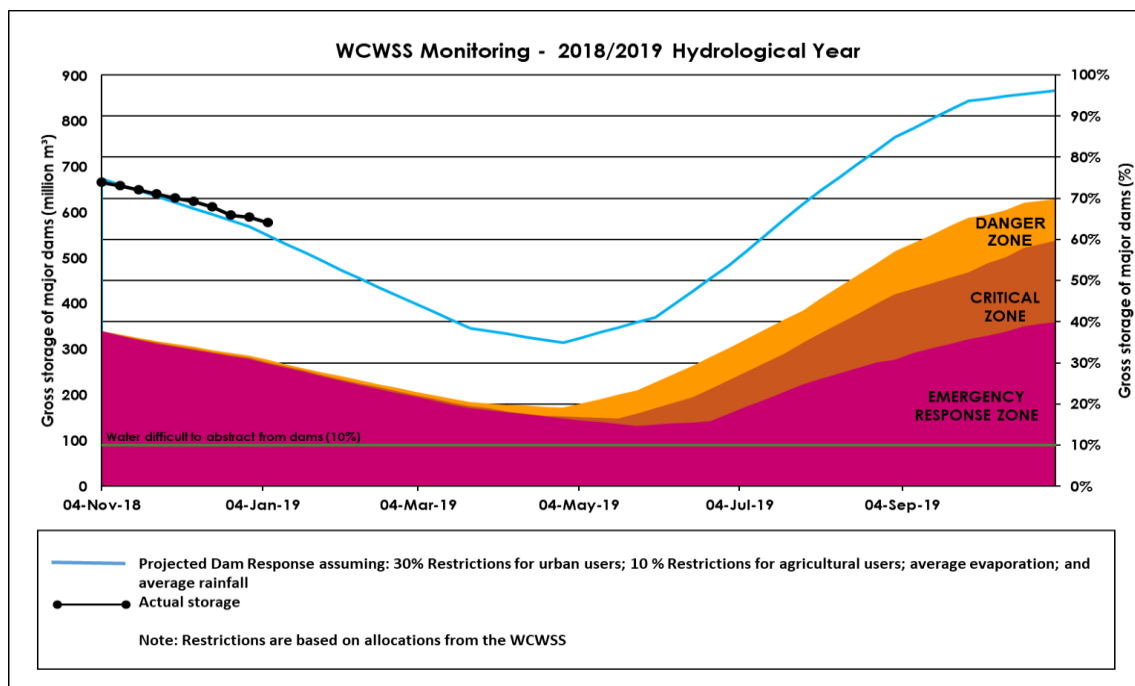
Disclaimer: The data depicted above is indicative and has been based on the City's own assessment of water use from the WCWSS. It is subject to official verification by the National Department of Water and Sanitation.

Water Usage from large dams comprising the Western Cape Water Supply System



Western Cape Water Supply System (WCWSS) weekly drought monitoring

This graph depicts total dam storage against potential system risk scenarios.



Water stored in major dams comprising Western Cape Water Supply System (WCWSS)

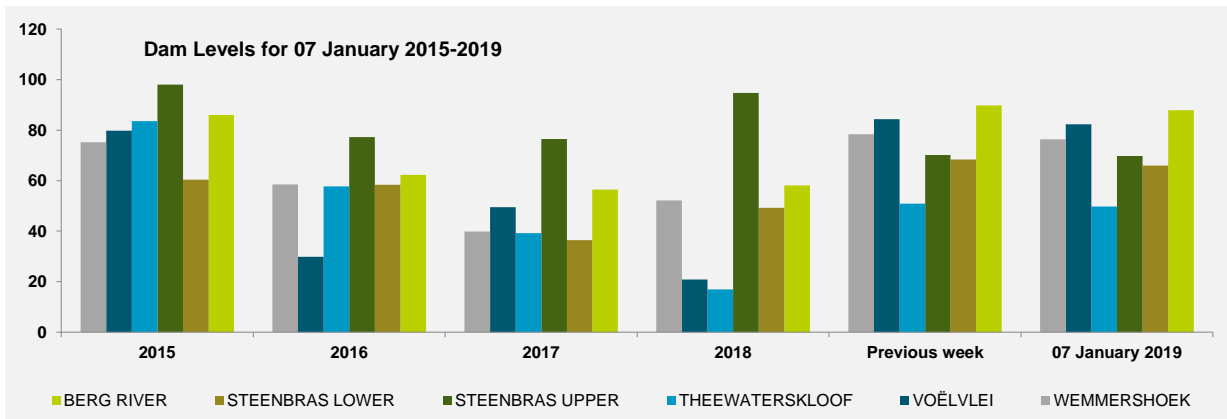
MAJOR DAMS	STORAGE						
	CAPACITY	%		%			%
	MI	07 January 2019	Previous week	2018	2017	2016	2015
BERG RIVER	130 010	87.9	89.8	58.1	56.5	62.3	85.9
STEENBRAS LOWER	33 517	66.0	68.3	49.2	36.4	58.4	60.4
STEENBRAS UPPER	31 767	69.8	70.1	94.8	76.5	77.2	98.0
THEEWATERSKLOOF	480 188	49.7	50.8	16.9	39.2	57.7	83.6
VOËLVLEI	164 095	82.3	84.3	20.8	49.5	29.9	79.8
WEMMERSHOEK	58 644	76.3	78.4	52.2	39.8	58.5	75.2
TOTAL STORED	898 221	577 180	590 435	268 211	402 863	485 681	739 576
% STORAGE		64.3	65.7	29.9	44.9	54.1	82.3

NOTES:

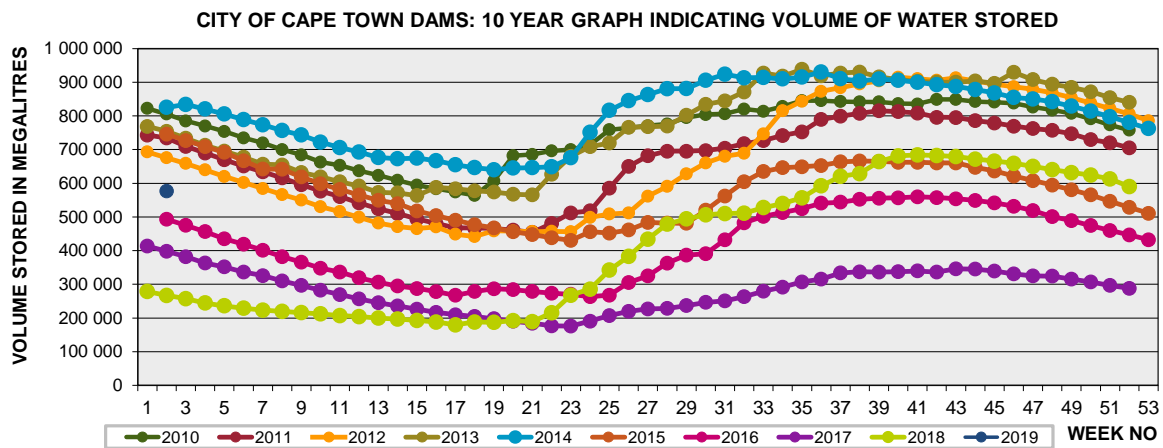
1) Capacity of the major dams of the Western Cape Water Supply System is 99.6% and that of the minor dams 0.4% of the combined capacity of the major and minor dams. Kindly note that all the Major Dams show gross capacity.

2) All figures are for 07 January for each year except for those in the second column, which gives the figures for the previous week of this year.

3) The last 10% of a dam's water is difficult to use, the useable water in the dam is approximately 10% less than the dam level.



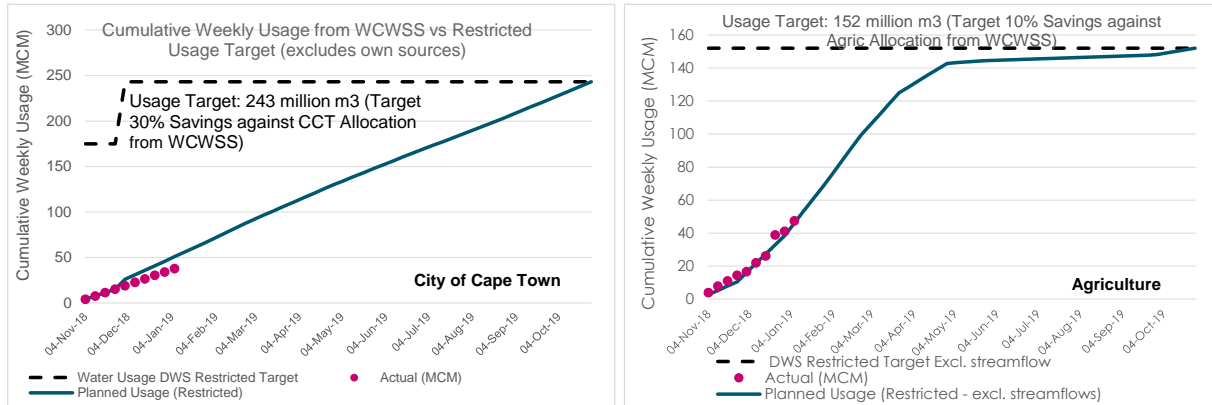
Ten year graph Indicating volume of water stored in major dams Comprising Western Cape Water Supply System (WCWSS)



Water stored in minor dams within Cape Town

MINOR DAMS	STORAGE						
	CAPACITY	%		%			%
	MI	07 January 2019	Previous week	2018	2017	2016	2015
ALEXANDRA (Table Mountain)	126	49.5	51.5	45.6	33.2	44.4	41.9
DE VILLIERS (Table Mountain)	243	46.8	53.6	79.6	70.2	72.0	63.9
HEL-Y-HUTCHINSON (Table Mountain)	925	98.8	99.5	96.8	98.1	97.6	46.1
KLEINPLAATS (Simon's Town)	1 368	76.6	79.0	54.2	60.1	55.5	45.4
LAND-EN-ZEEZICHT (Helderberg)	451	99.5	100.0	100.0	84.7	48.6	0.0
LEWIS GAY (Simon's Town)	182	50.0	55.7	93.6	52.1	69.7	79.6
VICTORIA (Table Mountain)	128	85.8	86.8	92.3	90.0	74.3	85.1
WOODHEAD (Table Mountain)	954	78.1	76.7	92.0	98.6	63.8	68.3

Water usage from large dams comprising the Western Cape Water Supply System



CCT AVG DAILY PRODUCTION WCWSS LARGE DAMS ONLY (M/d)

541

The above graph tracks City of Cape Town (CCT) water usage against the Department of Water and Sanitation (DWS) restriction requirement against our unrestricted demand (or past usage). Restriction targets have changed as of 1 December 2018. CCT has been restricted at 30% against the WCWSS approved allocation to the CCT.

Water Quality Sample Pass Rate

Month	Water Quality Compliance (%)	Target (%)
Sep-17	99.57	98
Oct-17	99.57	98
Nov-17	99.49	98
Dec-17	99.44	98
Jan-18	99.43	98
Feb-18	99.38	98
Mar-18	99.38	98
Apr-17	99.26	98
May-18	99.20	98
Jun-18	99.07	98
Jul-18	99.12	98
Aug-18	99.07	98
Sep-18	99.08	98

Notes:

This table shows CCT drinking water quality compliance according to the South African National Standard 241:2015. Compliance, measured against all prescribed chemical and microbiological components, consistently exceeds the very high CCT target of 98%. (Overall compliance percentages of continuous sampling and analysis are released on a monthly basis. The latest available is for September).

Rainfall

RAINFALL (mm)	31-Dec	01-Jan	02-Jan	03-Jan	04-Jan	05-Jan	06-Jan	Jan	
								Total*	LT Average
Blackheath Upper	0.0	0.0	0.0	0.0	0.0	0.0	0.0	0.0	14.1
Brooklands	0.0	4.0	0.0	0.0	0.0	0.0	0.0	4.0	22.5
Newlands	0.0	0.0	0.0	0.0	0.0	0.0	0.0	0.0	34.1
Steenbras	0.0	1.5	0.0	0.0	0.0	0.0	0.0	1.5	24.3
Table Mountain (Woodhead)	0.0	7.5	0.0	0.0	0.0	0.0	0.0	7.5	49.5
Theewaterskloof	0.0	0.0	0.0	0.0	0.0	0.0	0.0	0.0	22.0
Tygerberg	0.0	0.0	0.0	0.0	0.0	0.0	0.0	0.0	12.7
Voëlvlei	0.0	0.0	0.0	0.0	0.0	0.0	0.0	0.0	14.4
Wemmershoek	0.0	0.0	0.0	0.0	0.0	0.0	0.0	0.0	14.0
Wynberg	0.0	0.0	0.0	0.0	0.0	0.0	0.0	0.0	22.4

Notes: *Total/cumulative rainfall for month indicated above
LT: Long Term