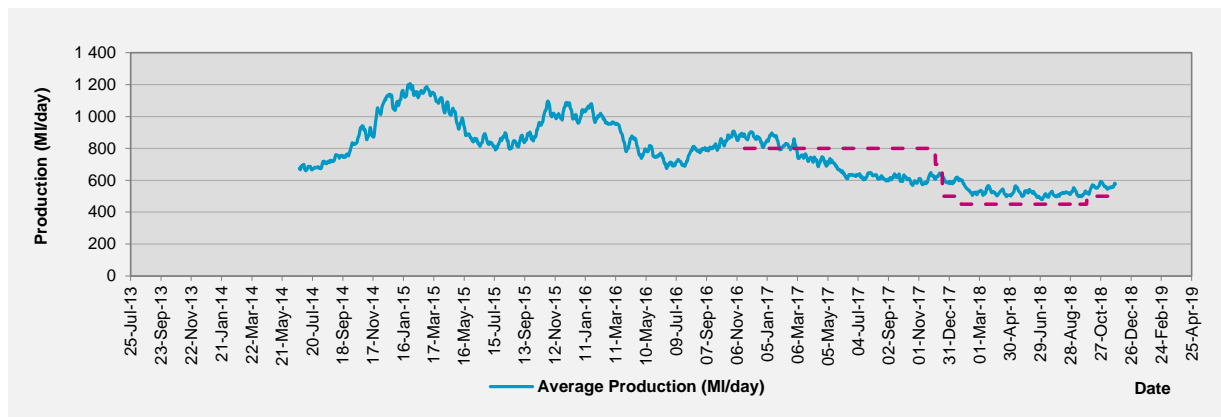


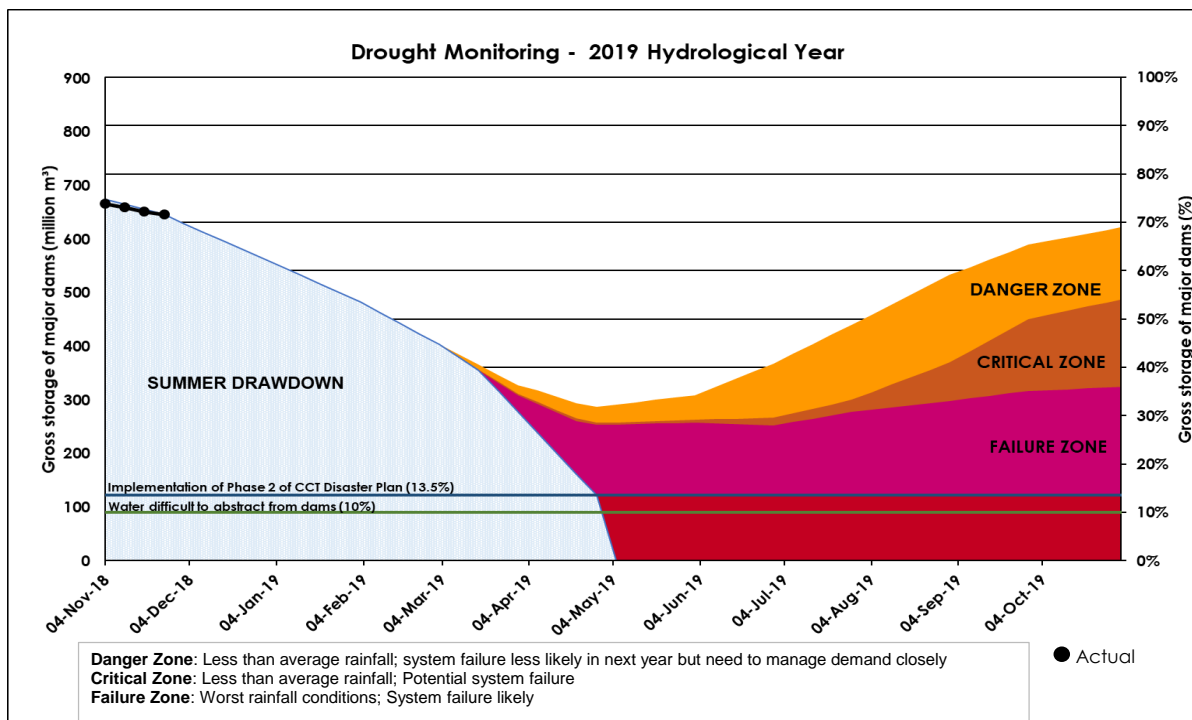
**Disclaimer:** The data depicted above is indicative and has been based on the City's own assessment of water use from the WCWSS. It is subject to official verification by the National Department of Water and Sanitation.

## Water Usage from large dams comprising the Western Cape Water Supply System



## Western Cape Water Supply System (WCWSS) weekly drought monitoring

This graph depicts total dam storage against potential system risk scenarios.



## Water stored in major dams comprising Western Cape Water Supply System (WCWSS)

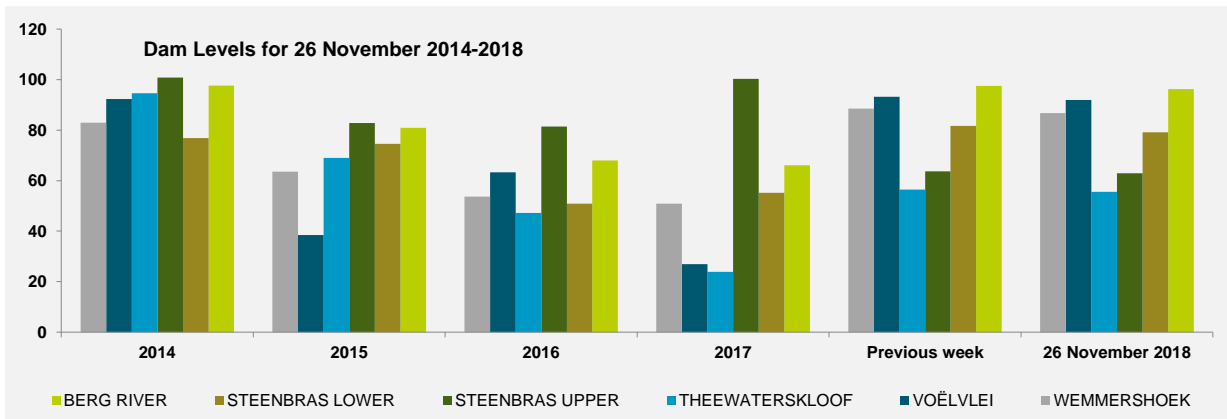
MAJOR DAMS	STORAGE						
	CAPACITY	%		%		%	
	MI	26 November 2018	Previous week	2017	2016	2015	2014
BERG RIVER	130 010	96.2	97.5	66.1	68.0	80.9	97.6
STEENBRAS LOWER	33 517	79.1	81.7	55.2	50.9	74.6	76.8
STEENBRAS UPPER	31 767	62.9	63.7	100.3	81.4	82.9	100.8
THEEWATERSKLOOF	480 188	55.6	56.4	23.9	47.3	69.0	94.6
VOËLVLEI	164 095	91.9	93.2	26.9	63.3	38.5	92.3
WEMMERSHOEK	58 644	86.7	88.5	50.9	53.7	63.6	82.9
<b>TOTAL STORED</b>	<b>898 221</b>	<b>640 431</b>	<b>650 170</b>	<b>325 186</b>	<b>493 809</b>	<b>588 471</b>	<b>839 004</b>
<b>% STORAGE</b>		<b>71.3</b>	<b>72.4</b>	<b>36.2</b>	<b>55.0</b>	<b>65.5</b>	<b>93.4</b>

### NOTES:

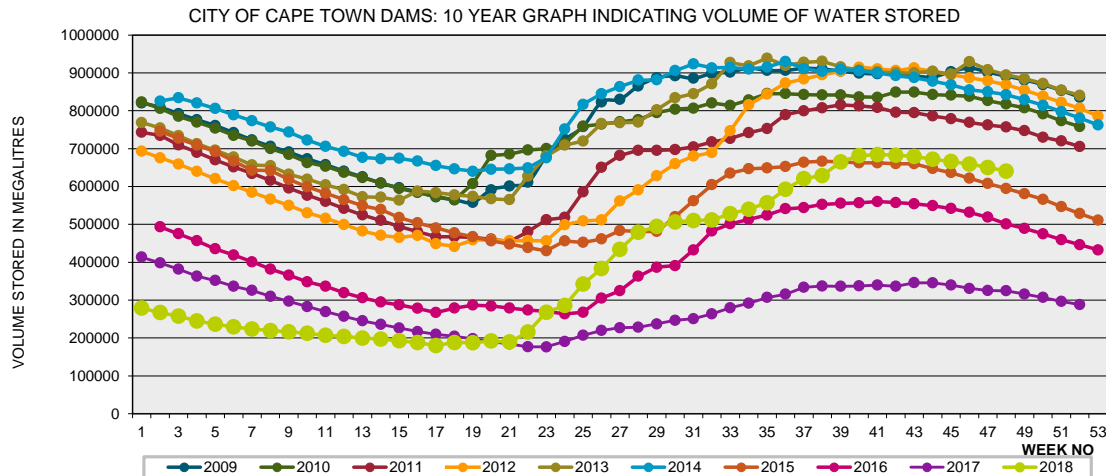
1) Capacity of the major dams of the Western Cape Water Supply System is 99.6% and that of the minor dams 0.4% of the combined capacity of the major and minor dams. Kindly note that all the Major Dams show gross capacity.

2) All figures are for 26 November for each year except for those in the second column, which gives the figures for the previous week of this year.

3) The last 10% of a dam's water is difficult to use, the useable water in the dam is approximately 10% less than the dam level.



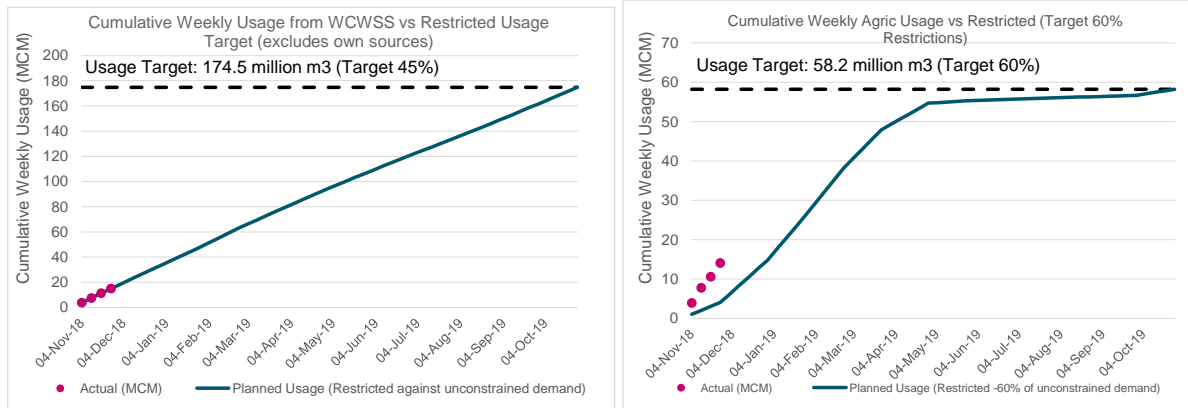
## Ten year graph Indicating volume of water stored in major dams Comprising Western Cape Water Supply System (WCWSS)



## Water stored in minor dams within Cape Town

MINOR DAMS	STORAGE						
	CAPACITY	%		%		%	
	MI	26 November 2018	Previous week	2017	2016	2015	2014
ALEXANDRA (Table Mountain)	126	62.6	66.4	60.3	34.4	33.2	54.9
DE VILLIERS (Table Mountain)	243	80.2	84.1	81.5	84.9	79.6	63.2
HEL-Y-HUTCHINSON (Table Mountain)	925	95.8	96.6	100.0	97.3	100.2	39.3
KLEINPLAATS (Simon's Town)	1 368	88.3	90.4	62.2	76.4	72.9	72.0
LAND-EN-ZEEZICHT (Helderberg)	451	100.0	99.7	100.0	76.5	69.4	0.0
LEWIS GAY (Simon's Town)	182	79.3	83.9	78.0	53.8	100.9	67.0
VICTORIA (Table Mountain)	128	89.7	92.3	99.3	94.6	98.9	91.2
WOODHEAD (Table Mountain)	954	67.0	67.3	97.3	98.2	71.4	74.9

## Water usage from large dams comprising the Western Cape Water Supply System



**CCT AVG DAILY PRODUCTION WCWSS LARGE DAMS ONLY (M/d)**

**555**

The above graph tracks City of Cape Town (CCT) water usage against the Department of Water and Sanitation (DWS) restriction requirement against our unrestricted demand (or past usage). Restriction targets may change end of November 2018, pending DWS confirmation

## Water Quality Sample Pass Rate

Month	Water Quality Compliance (%)	Target (%)
Sep-17	99.57	98
Oct-17	99.57	98
Nov-17	99.49	98
Dec-17	99.44	98
Jan-18	99.43	98
Feb-18	99.38	98
Mar-18	99.38	98
Apr-17	99.26	98
May-18	99.20	98
Jun-18	99.07	98
Jul-18	99.12	98
Aug-18	99.07	98
Sep-18	99.08	98

### Notes:

This table shows CCT drinking water quality compliance according to the South African National Standard 241:2015. Compliance, measured against all prescribed chemical and microbiological components, consistently exceeds the very high CCT target of 98%. (Overall compliance percentages of continuous sampling and analysis are released on a monthly basis. The latest available is for September).

## Rainfall

RAINFALL (mm)	19-Nov	20-Nov	21-Nov	22-Nov	23-Nov	24-Nov	25-Nov	Nov	
								Total*	LT Average
Blackheath Upper	0.0	2.0	0.0	0.0	0.0	0.0	0.0	5.0	24.9
Brooklands	5.0	0.5	0.0	0.0	0.0	0.0	0.0	19.5	53.8
Newlands	0.0	3.0	0.0	0.0	0.0	0.0	0.0	13.0	67.3
Steenbras	1.7	2.0	0.0	0.0	0.0	0.0	0.0	19.5	46.2
Table Mountain (Woodhead)	3.0	7.5	0.0	0.0	0.0	0.0	0.0	27.5	73.9
Theewaterskloof	0.0	2.6	0.0	0.0	0.0	0.0	0.0	10.1	36.8
Tygerberg	0.0	2.0	0.0	0.0	0.0	0.0	0.0	9.7	20.6
Voëlvlei	0.0	0.0	0.0	0.0	0.0	0.0	0.0	5.0	25.7
Wemmershoek	0.0	0.0	0.0	0.0	0.0	0.0	0.0	15.0	38.1
Wynberg	0.0	3.1	0.0	0.0	0.0	0.0	0.0	15.1	38.4

Notes: \*Total/cumulative rainfall for month indicated above  
LT: Long Term